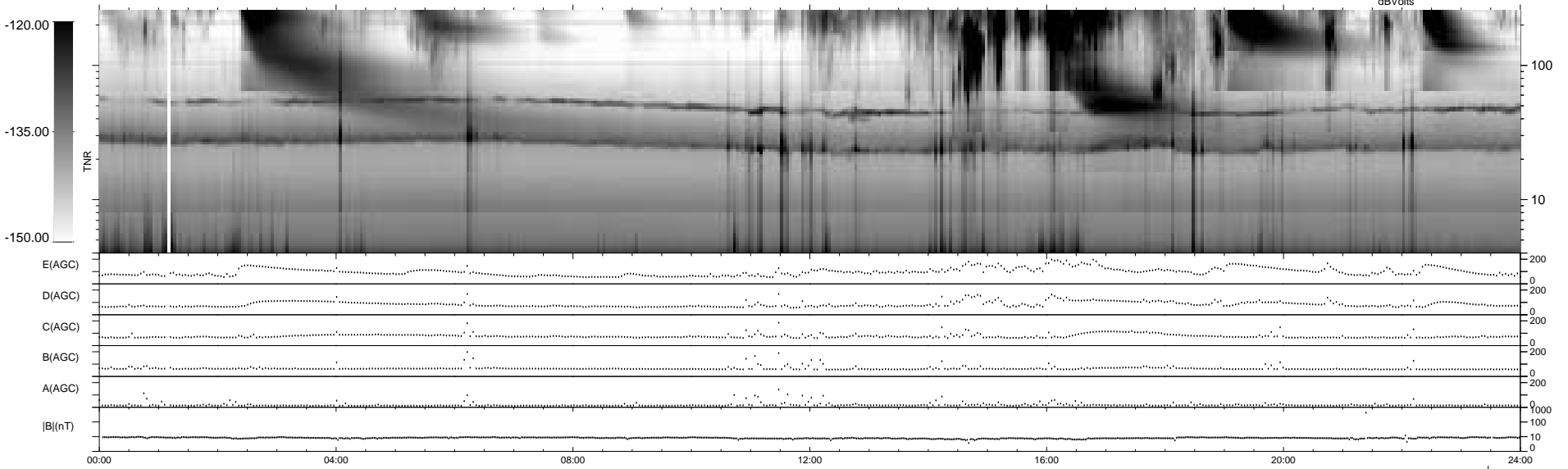
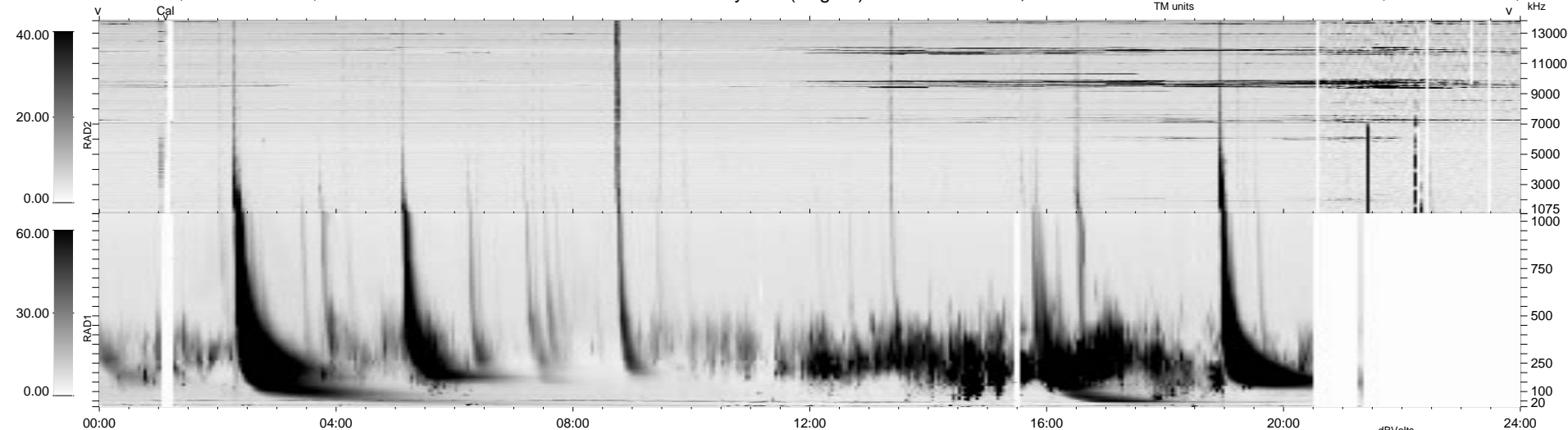


160 bad + 778 good MF/939MF projected (82%) - 1 missing MF
 Avg interval = 180 secs
 Re = 60.74 (54.80, -8.01, -24.93 GSE)

1.7d VMS-SunOS LZ version = v01

WIND/WAVES Summary Plot (Page 1) for 24-NOV-1998, DOY = 328

DAILY Tue Sep 16, 2008
 Re = 52.74 (45.36, -2.83, -26.76 GSE)



RAD2
 Antenna Ey
 Mode LIN(1)
 SUM/SEP SEP
 Toggle OFF
 RAD1
 Antenna Ex
 Mode LIS(2,3)
 SUM/SEP SUM
 Toggle OFF
 TNR
 Antenna ExEy
 Mode A-32
 Sweep ABCDE