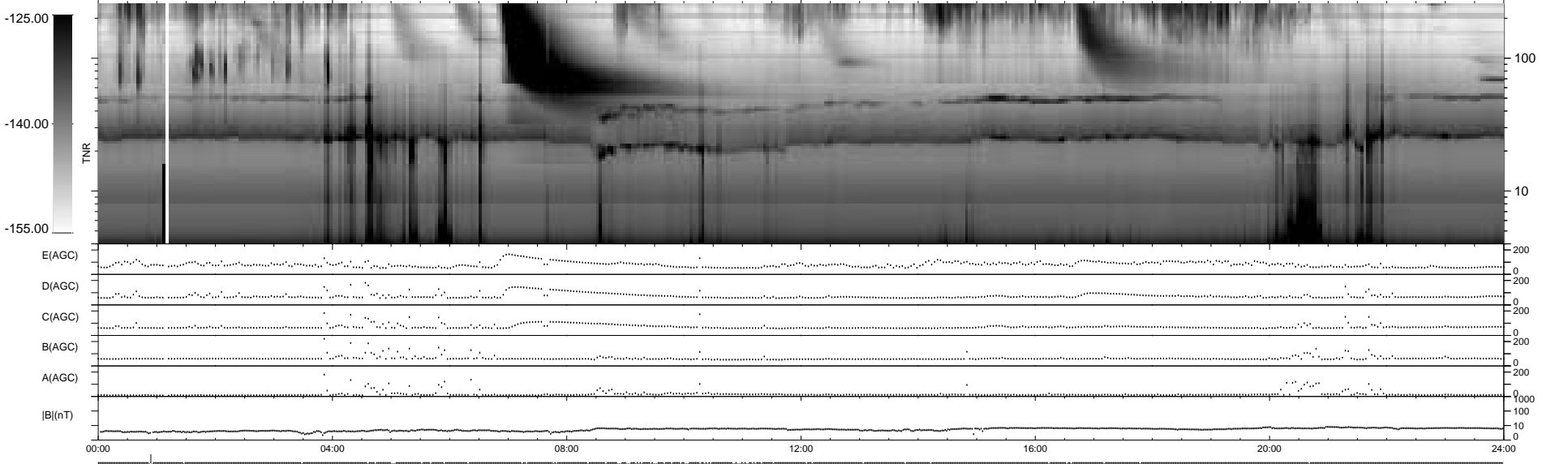
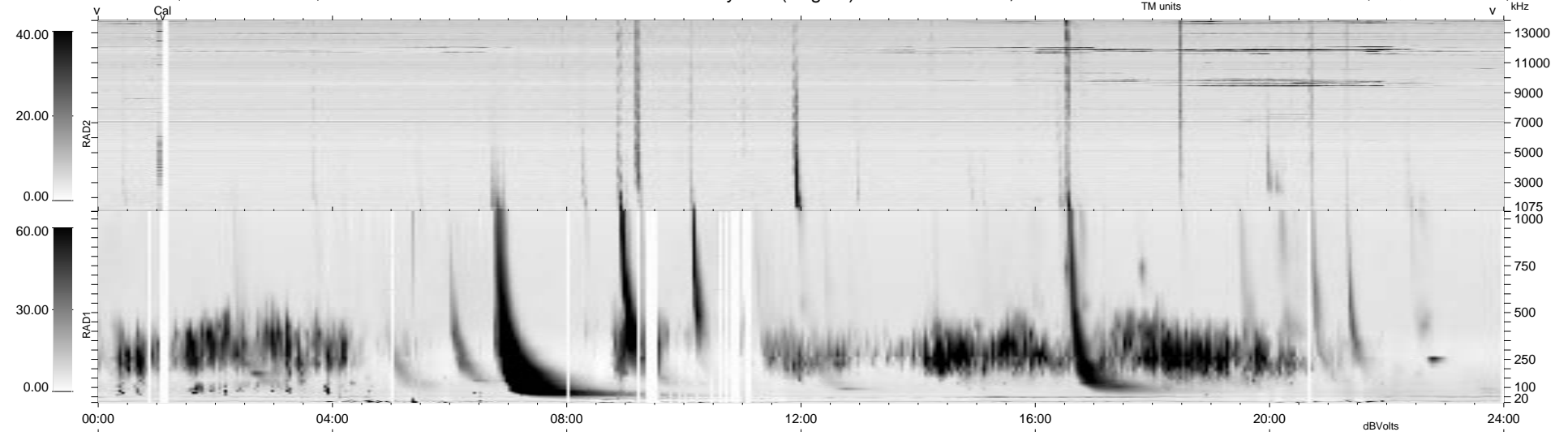


65 bad + 873 good MF/939MF projected (92%) - 1 missing MF
 Avg interval = 180 secs
 Re = 70.59 (66.33, -16.39, -17.75 GSE)

1.7d VMS-SunOS LZ version = v01
 DAILY Tue Sep 16, 2008
 Re = 66.64 (61.73, -12.58, -21.75 GSE)

WIND/WAVES Summary Plot (Page 1) for 22-NOV-1998, DOY = 326



```

RAD2
Antenna Ey .....
Mode LIN(1) .....
SUM/SEP SEP .....
Toggle OFF .....

RAD1
Antenna Ex .....
Mode LIS(2,3) .....
SUM/SEP SUM .....
Toggle OFF .....

TNR
Antenna ExEy .....
Mode A-32 .....
Sweep ABCDE .....
  
```