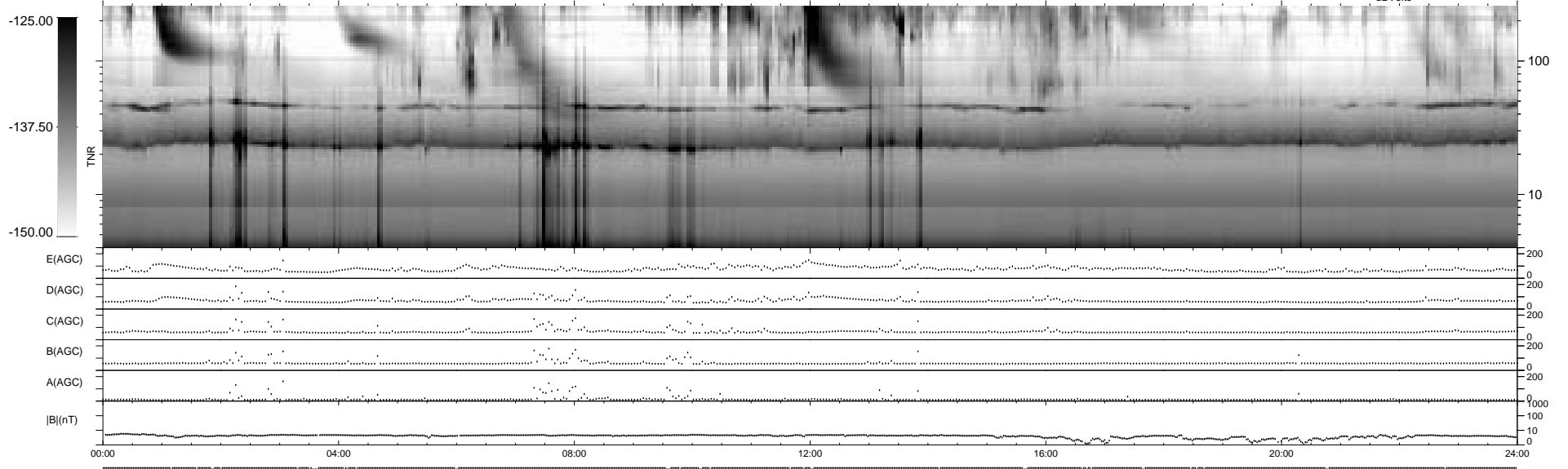
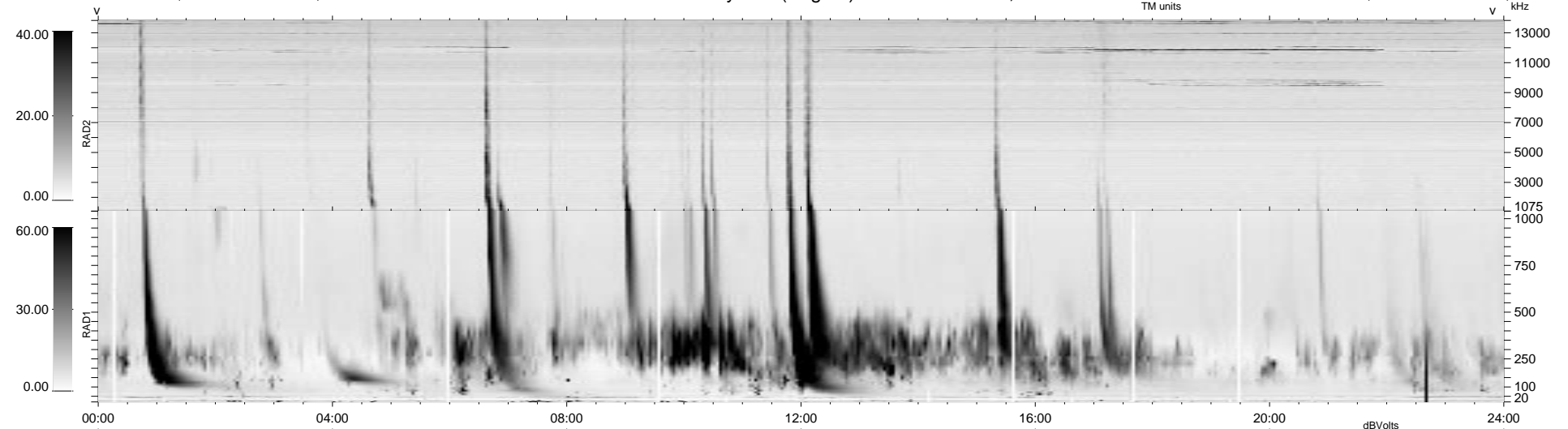


42 bad + 897 good MF/939MF projected (95%) - 0 missing MFs  
 Avg interval = 180 secs  
 Re = 72.85 (68.95, -19.55, -13.11 GSE)

1.7d VMS-SunOS LZ version = v01  
 DAILY Tue Sep 16, 2008  
 Re = 70.61 (66.36, -16.41, -17.72 GSE)

WIND/WAVES Summary Plot (Page 1) for 21-NOV-1998, DOY = 325



RAD2  
 Antenna Ey  
 Mode LIN(1)  
 SUM/SEP SEP  
 Toggle OFF

RAD1  
 Antenna Ex  
 Mode LIS(2,3)  
 SUM/SEP SUM  
 Toggle OFF

TNR  
 Antenna ExEy  
 Mode A-32  
 Sweep ABCDE