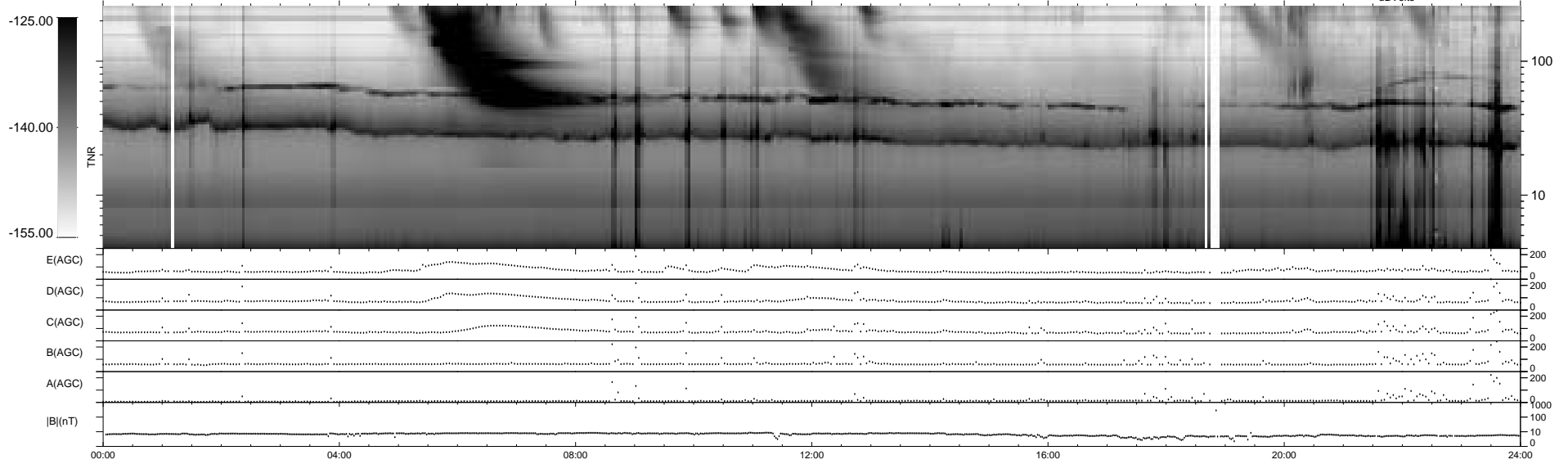
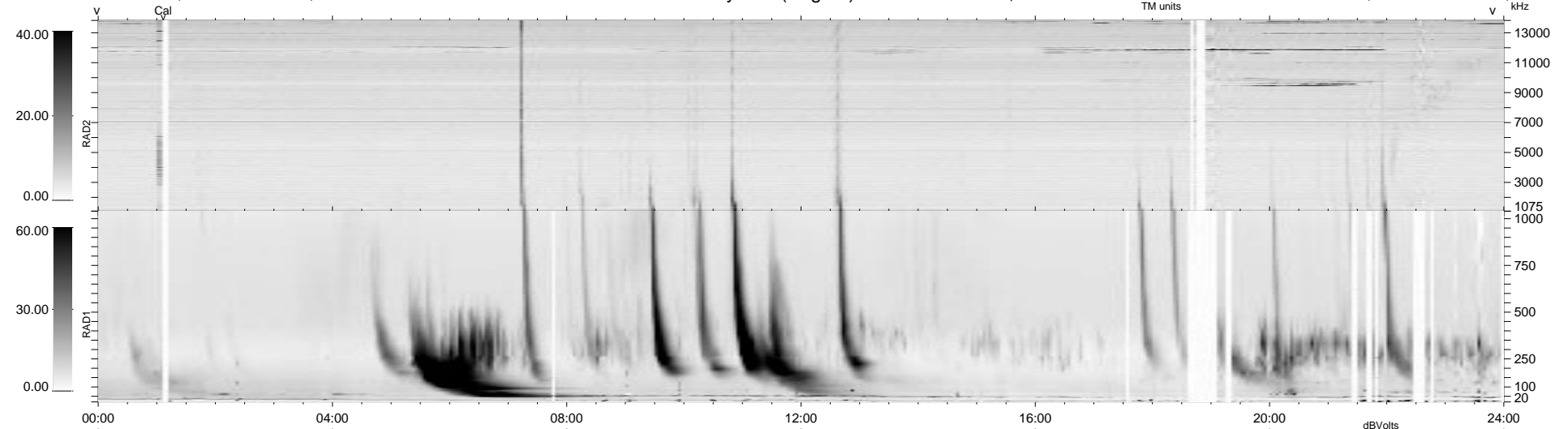


75 bad + 864 good MF/939MF projected (92%) - 0 missing MFs  
 Avg interval = 180 secs  
 Re = 73.46 (69.62, -22.02, -8.05 GSE)

1.7d VMS-SunOS LZ version = v01  
 DAILY Tue Sep 16, 2008  
 Re = 72.86 (68.96, -19.57, -13.07 GSE)

WIND/WAVES Summary Plot (Page 1) for 20-NOV-1998, DOY = 324



RAD2  
 Antenna Ey .....  
 Mode LIN(1) .....  
 SUM/SEP SEP .....  
 Toggle OFF .....  
 RAD1  
 Antenna Ex .....  
 Mode LIS(2,3) .....  
 SUM/SEP SUM .....  
 Toggle OFF .....  
 TNR  
 Antenna ExEy .....  
 Mode A-32 .....  
 Sweep ABCDE .....