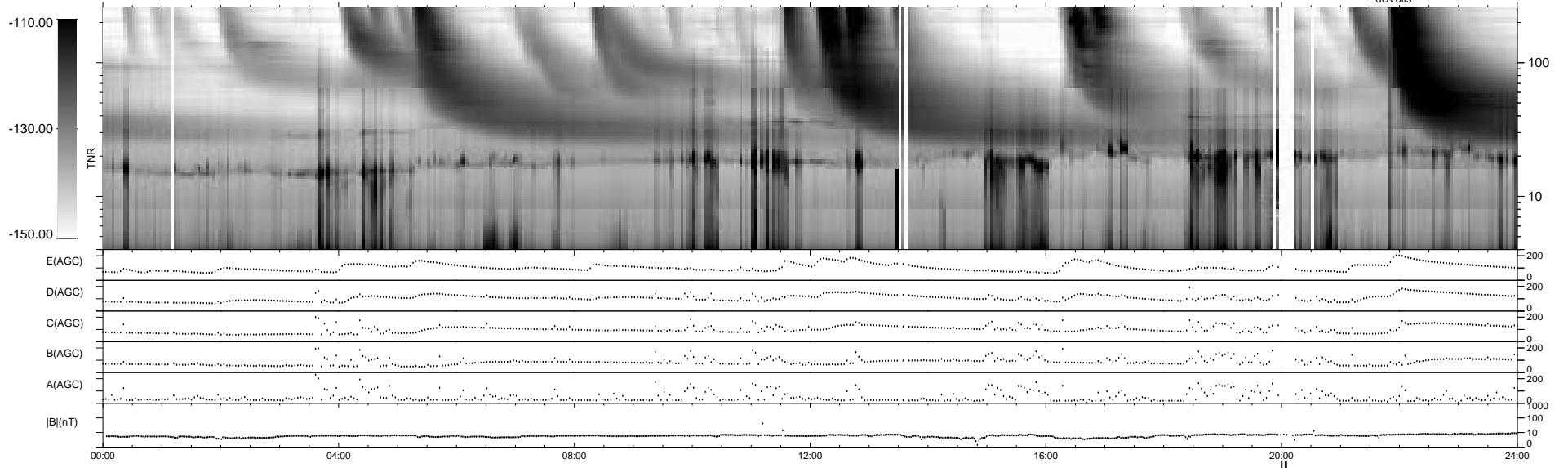
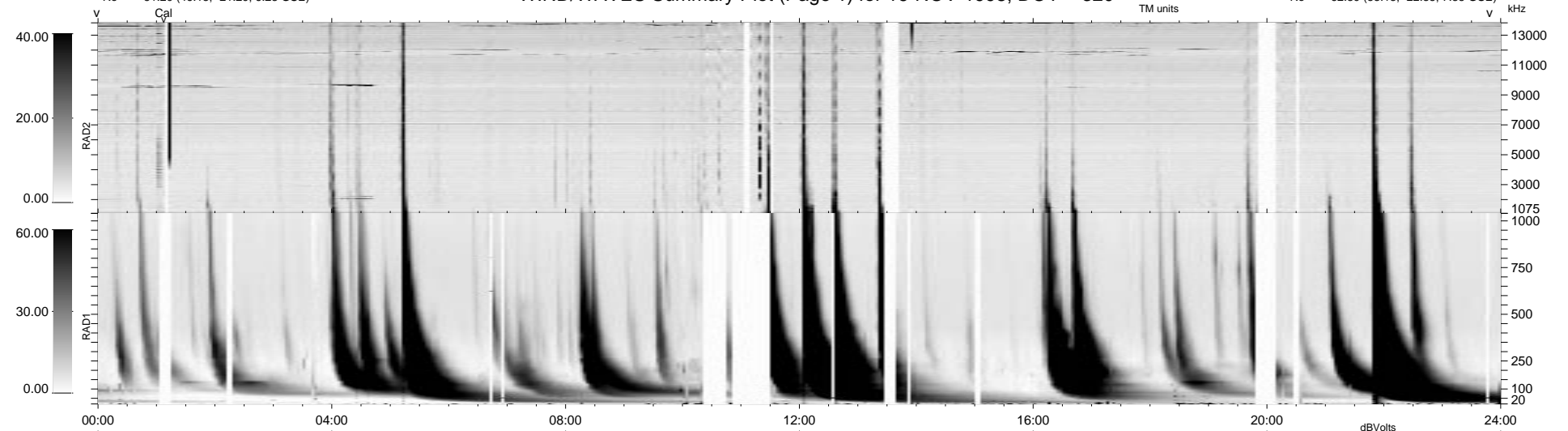


135 bad + 801 good MF/939MF projected (85%) - 3 missing MFs
 Avg interval = 180 secs
 Re = 51.20 (46.13, -21.29, 6.28 GSE)

1.7d VMS-SunOS LZ version = v01

WIND/WAVES Summary Plot (Page 1) for 16-NOV-1998, DOY = 320

DAILY Tue Sep 16, 2008
 Re = 62.89 (58.13, -22.85, 7.35 GSE)



RAD2
 Antenna Ey
 Mode LIN(1)
 SUM/SEP SEP
 Toggle OFF
 RAD1
 Antenna Ex
 Mode LIS(2,3)
 SUM/SEP SUM
 Toggle OFF
 TNR
 Antenna ExEy
 Mode A-32
 Sweep ABCDE