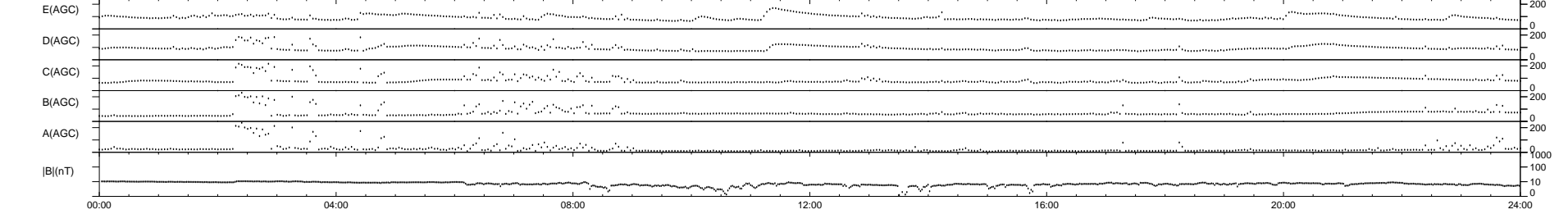
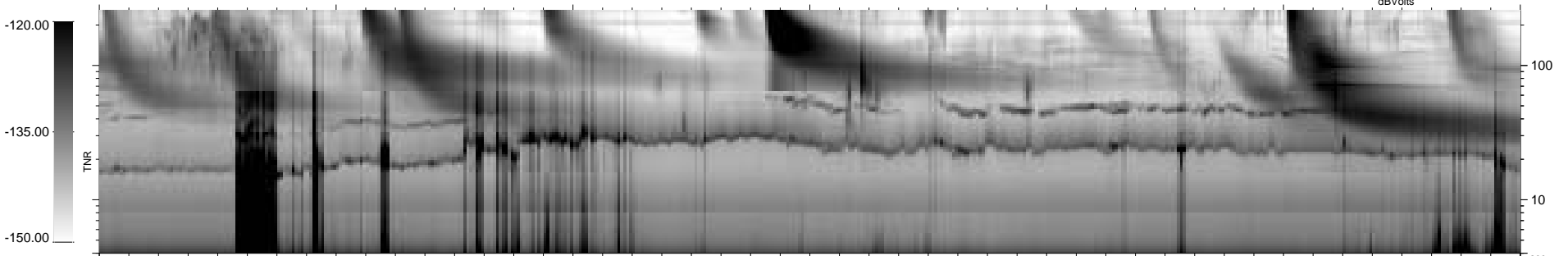
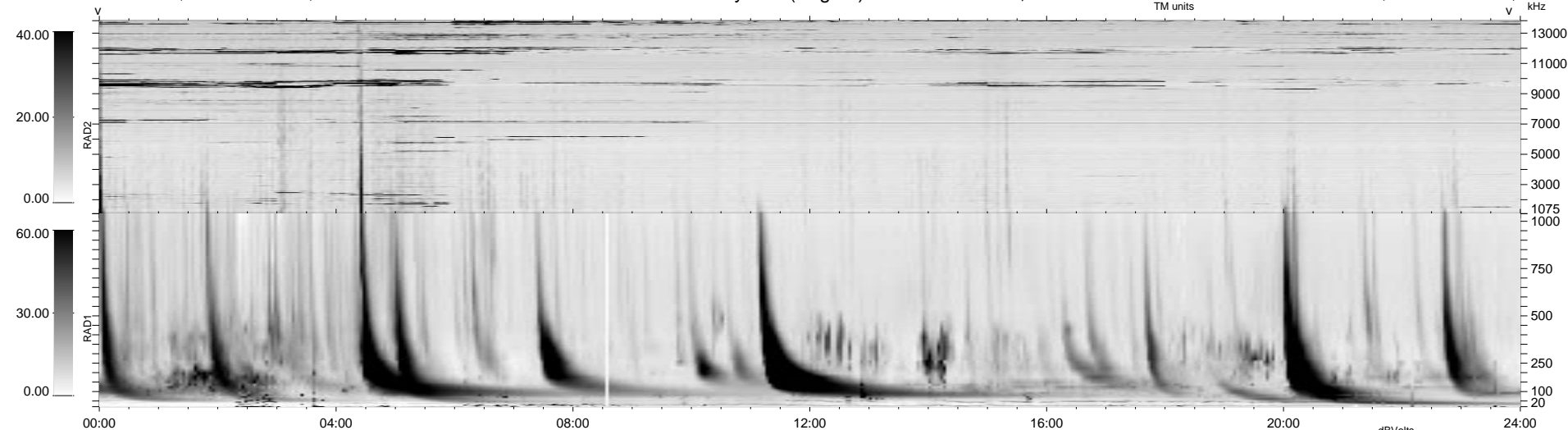


30 bad + 910 good MF/940MF projected (96%) - 0 missing MFs
 Avg interval = 180 secs
 Re = 35.92 (30.17, -18.99, 4.45 GSE)

1.7d VMS-SunOS LZ version = v01

WIND/WAVES Summary Plot (Page 1) for 15-NOV-1998, DOY = 319

DAILY Tue Sep 16, 2008
 Re = 51.11 (46.04, -21.28, 6.27 GSE)



RAD2
 Antenna Ey
 Mode LIN(1)
 SUM/SEP SEP
 Toggle OFF

RAD1
 Antenna Ex
 Mode LIS(2,3)
 SUM/SEP SUM
 Toggle OFF

TNR
 Antenna ExEy
 Mode A-32
 Sweep ABCDE