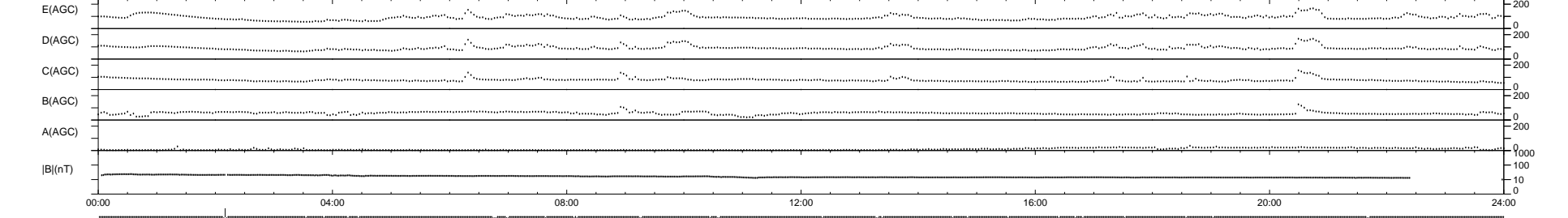
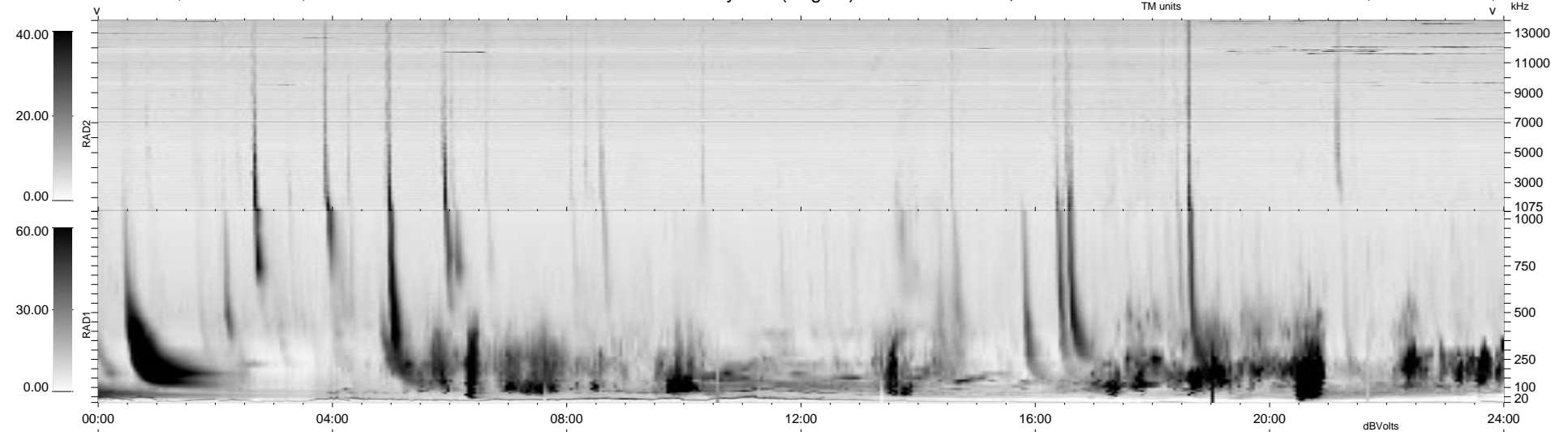


34 bad + 904 good MF/939MF projected (96%) - 1 missing MF
 Avg interval = 180 secs
 Re = 73.87 (71.98, 14.84, 7.46 GSE)

1.7d VMS-SunOS LZ version = v01
 DAILY Tue Sep 16, 2008
 Re = 66.46 (64.23, 15.80, 6.45 GSE)

WIND/WAVES Summary Plot (Page 1) for 09-NOV-1998, DOY = 313



RAD2
 Antenna Ey
 Mode LIN(1)
 SUM/SEP SEP
 Toggle OFF
 RAD1
 Antenna Ex
 Mode LIS(2,3)
 SUM/SEP SUM
 Toggle OFF
 TNR
 Antenna ExEy
 Mode A-32
 Sweep ABCDE