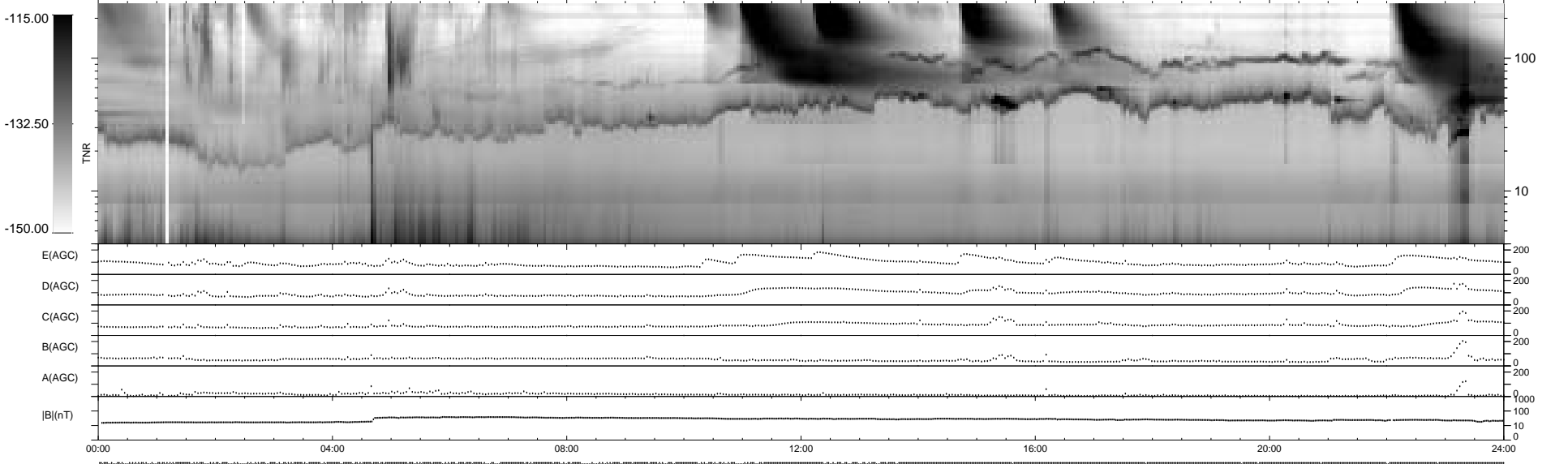
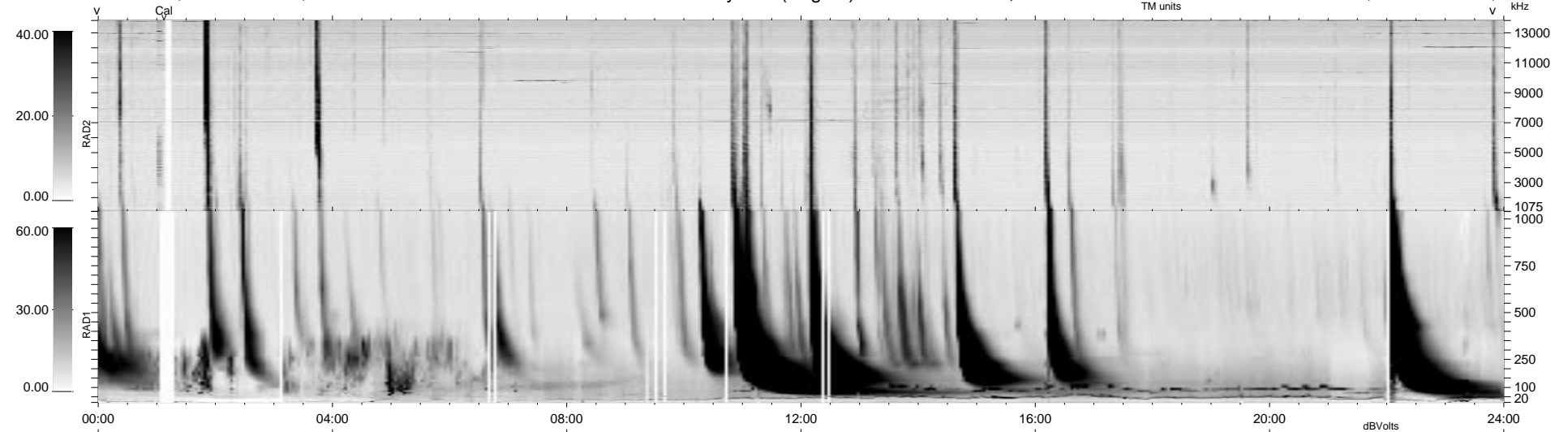


194 bad + 745 good MF/939MF projected (79%) - 0 missing MFs  
 Avg interval = 180 secs  
 Re = 79.48 (77.85, 13.71, 8.27 GSE)

1.7d VMS-SunOS LZ version = v01

WIND/WAVES Summary Plot (Page 1) for 08-NOV-1998, DOY = 312

DAILY Tue Sep 16, 2008  
 Re = 73.92 (72.03, 14.83, 7.47 GSE)



```

RAD2
Antenna Ey .....
Mode LIN(1) .....
SUM/SEP SEP .....
Toggle OFF .....

RAD1
Antenna Ex .....
Mode LIS(2.8) .....
SUM/SEP SUM .....
Toggle OFF .....

TNR
Antenna ExEy .....
Mode A-32 .....
Sweep ABCDE .....
  
```