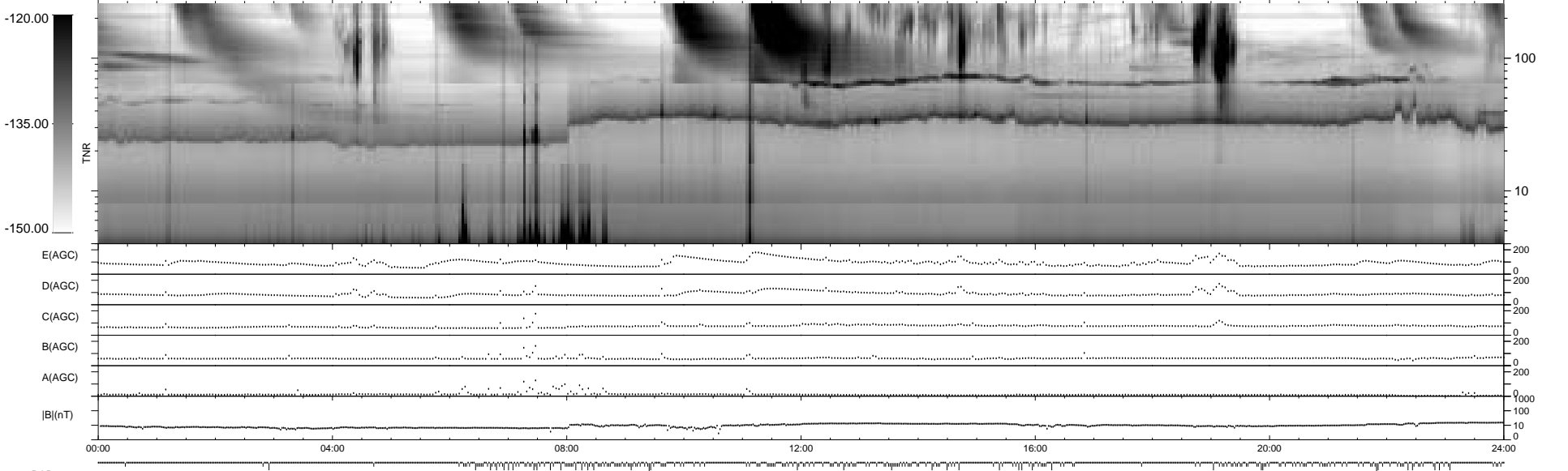
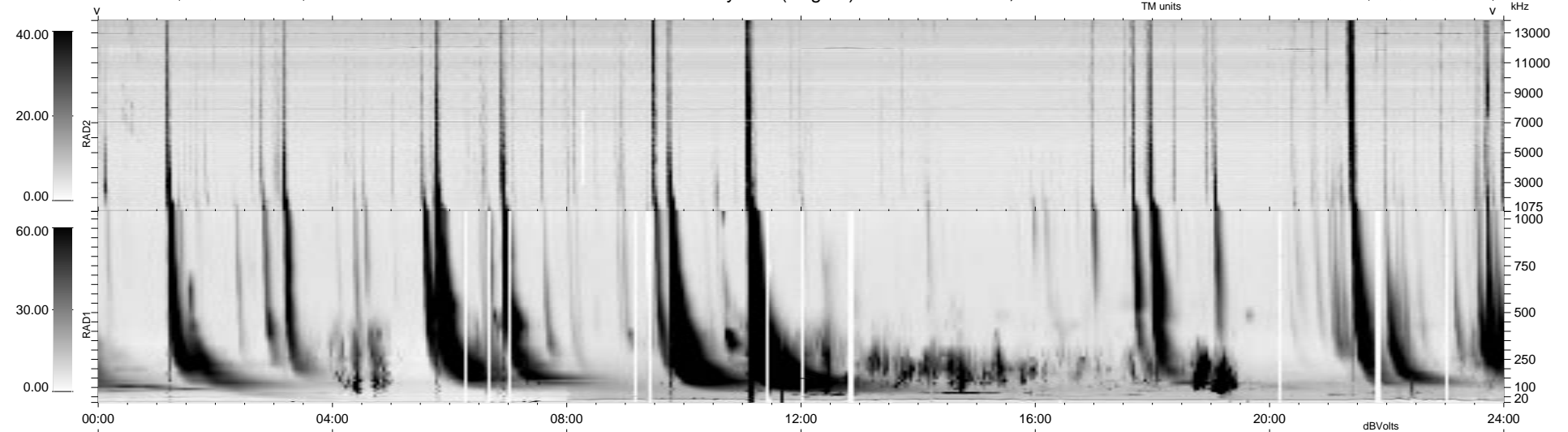


245 bad + 695 good MF/940MF projected (73%) - 0 missing MFs
 Avg interval = 180 secs
 Re = 83.47 (82.05, 12.48, 8.88 GSE)

1.7d VMS-SunOS LZ version = v01
 DAILY Tue Sep 16, 2008
 Re = 79.51 (77.88, 13.71, 8.27 GSE)

WIND/WAVES Summary Plot (Page 1) for 07-NOV-1998, DOY = 311



RAD2
 Antenna Ey
 Mode LIN(1)
 SUM/SEP SEP
 Toggle OFF

RAD1
 Antenna Ex
 Mode LIS(2,3)
 SUM/SEP SUM
 Toggle OFF

TNR
 Antenna ExEy
 Mode A-32
 Sweep ABCDE