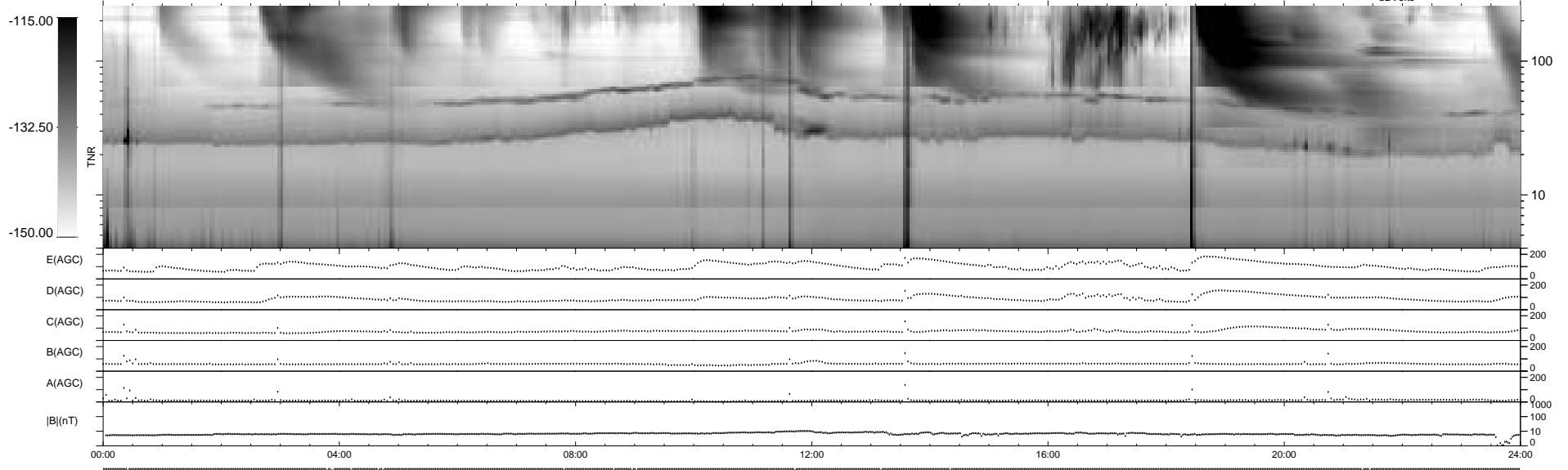
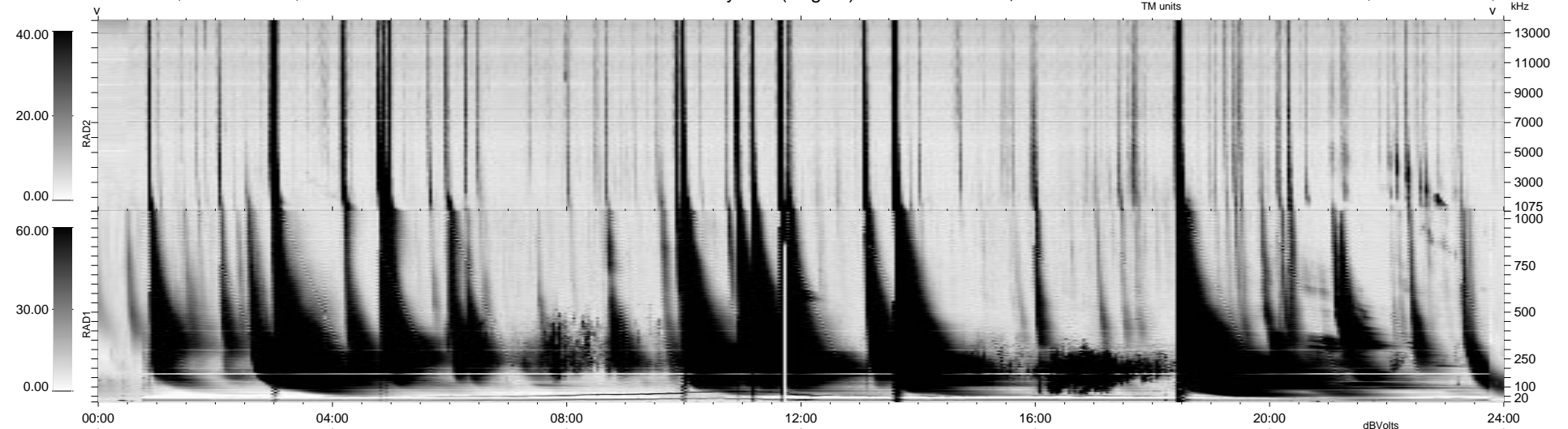


16 bad + 923 good MF/939MF projected (98%) - 0 missing MFs
 Avg interval = 180 secs
 Re = 87.21 (86.14, 9.68, 9.60 GSE)

1.7d VMS-SunOS LZ version = v01

WIND/WAVES Summary Plot (Page 1) for 05-NOV-1998, DOY = 309

DAILY Tue Sep 16, 2008
 Re = 86.03 (84.80, 11.13, 9.33 GSE)



RAD2
 Antenna Ey
 Mode LIN(1)
 SUM/SEP SUMSEP
 Toggle OFF

RAD1
 Antenna Ex
 Mode LIS(2,8)LIN(1)
 SUM/SEP SUMSEP
 Toggle OFF

TNR
 Antenna ExEy
 Mode A-32
 Sweep ABCDE

LIS(2,8) SUM