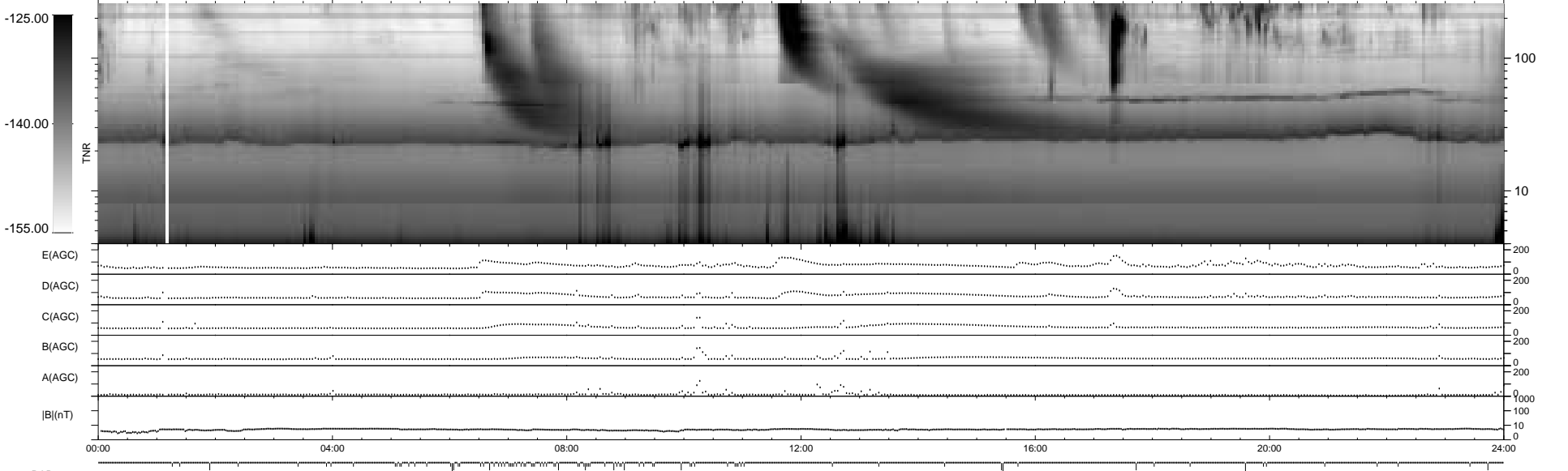
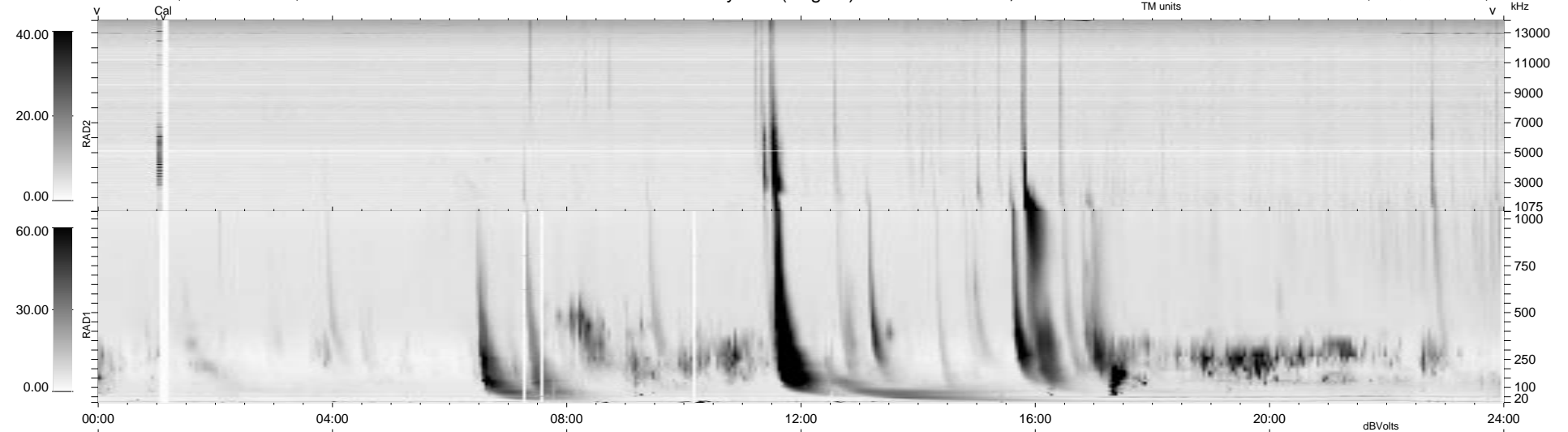


88 bad + 851 good MF/939MF projected (90%) - 0 missing MFs
 Avg interval = 180 secs
 Re = 87.10 (86.18, 8.09, 9.70 GSE)

1.7d VMS-SunOS LZ version = v01
 DAILY Tue Sep 16, 2008
 Re = 87.22 (86.15, 9.67, 9.60 GSE)

WIND/WAVES Summary Plot (Page 1) for 04-NOV-1998, DOY = 308



RAD2
 Antenna Ey
 Mode LIN(1)
 SUM/SEP SUM
 Toggle OFF
 RAD1
 Antenna Ex
 Mode LIS(2,3)
 SUM/SEP SUM
 Toggle OFF
 TNR
 Antenna ExEy
 Mode A-32
 Sweep ABCDE