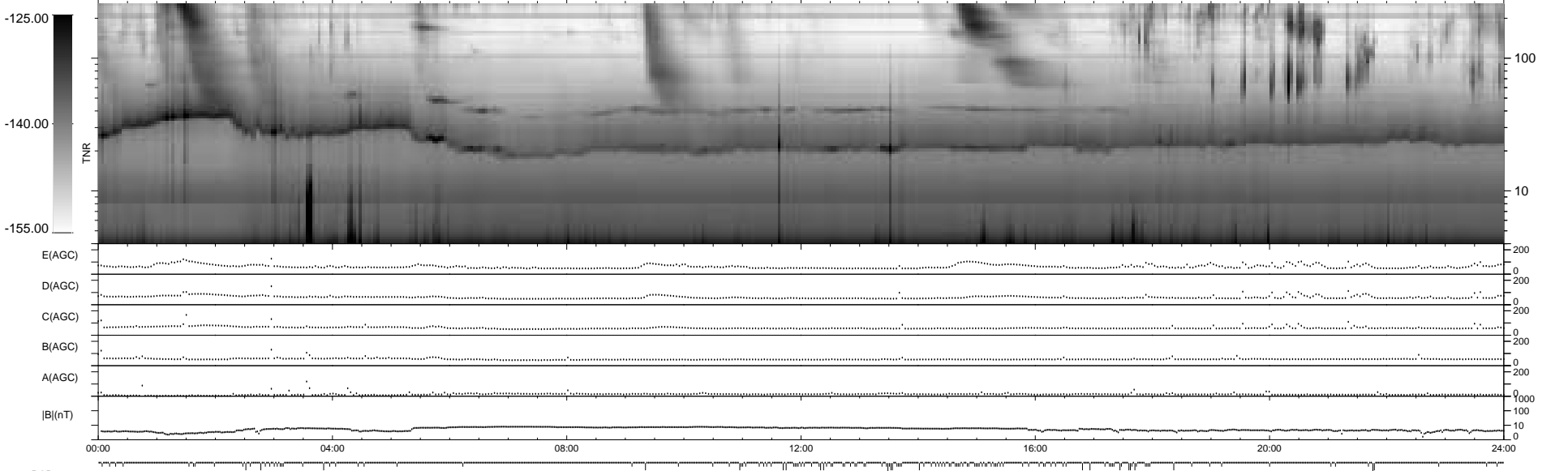
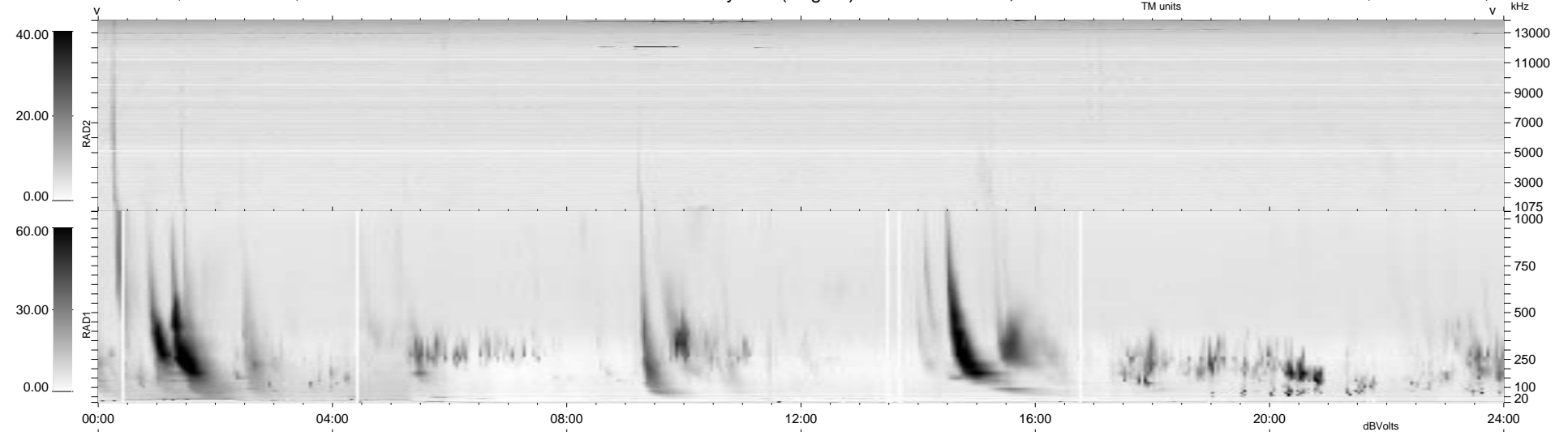


141 bad + 798 good MF/939MF projected (84%) - 0 missing MFs  
 Avg interval = 180 secs  
 Re = 85.66 (84.88, 6.33, 9.64 GSE)

1.7d VMS-SunOS LZ version = v01

WIND/WAVES Summary Plot (Page 1) for 03-NOV-1998, DOY = 307

DAILY Tue Sep 16, 2008  
 Re = 87.09 (86.17, 8.08, 9.70 GSE)



```

RAD2
Antenna Ey
Mode LIN(1)
SUM/SEP SUM
Toggle OFF

RAD1
Antenna Ex
Mode LIS(2,3)
SUM/SEP SUM
Toggle OFF

TNR
Antenna ExEy
Mode A-32
Sweep ABCDE
  
```