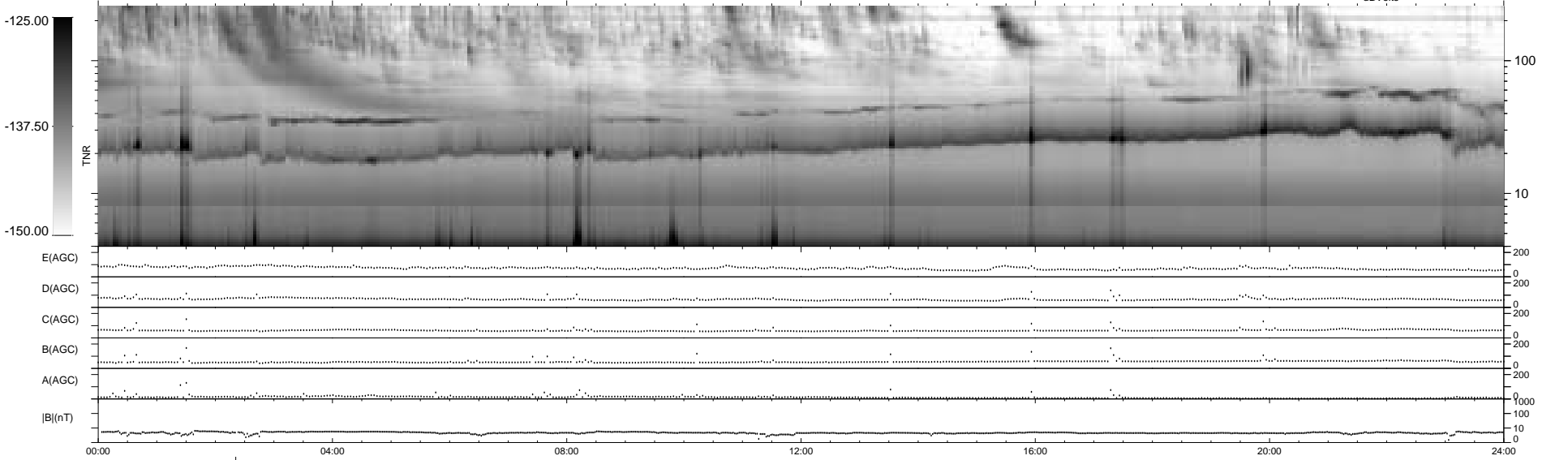
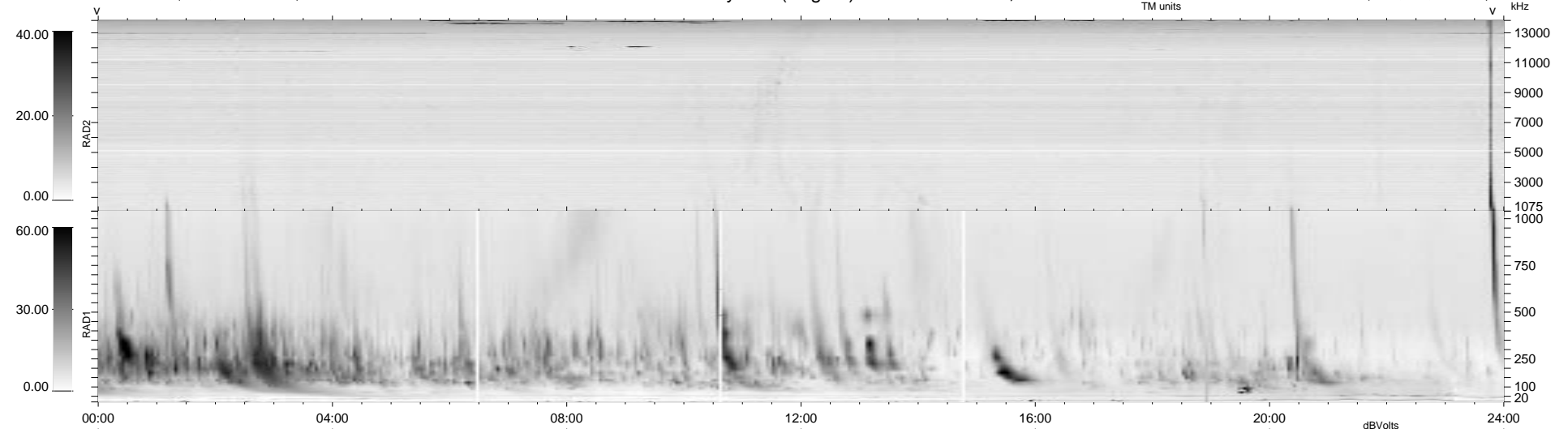


31 bad + 907 good MF/939MF projected (96%) - 1 missing MF
 Avg interval = 180 secs
 Re = 78.61 (78.06, 2.19, 8.97 GSE)

1.7d VMS-SunOS LZ version = v01

WIND/WAVES Summary Plot (Page 1) for 01-NOV-1998, DOY = 305

DAILY Tue Sep 16, 2008
 Re = 82.84 (82.19, 4.36, 9.40 GSE)



RAD2
 Antenna Ey
 Mode LIN(1)
 SUM/SEP SUM
 Toggle OFF
 RAD1
 Antenna Ex
 Mode LIS(2,3)
 SUM/SEP SUM
 Toggle OFF
 TNR
 Antenna ExEy
 Mode A-32
 Sweep ABCDE