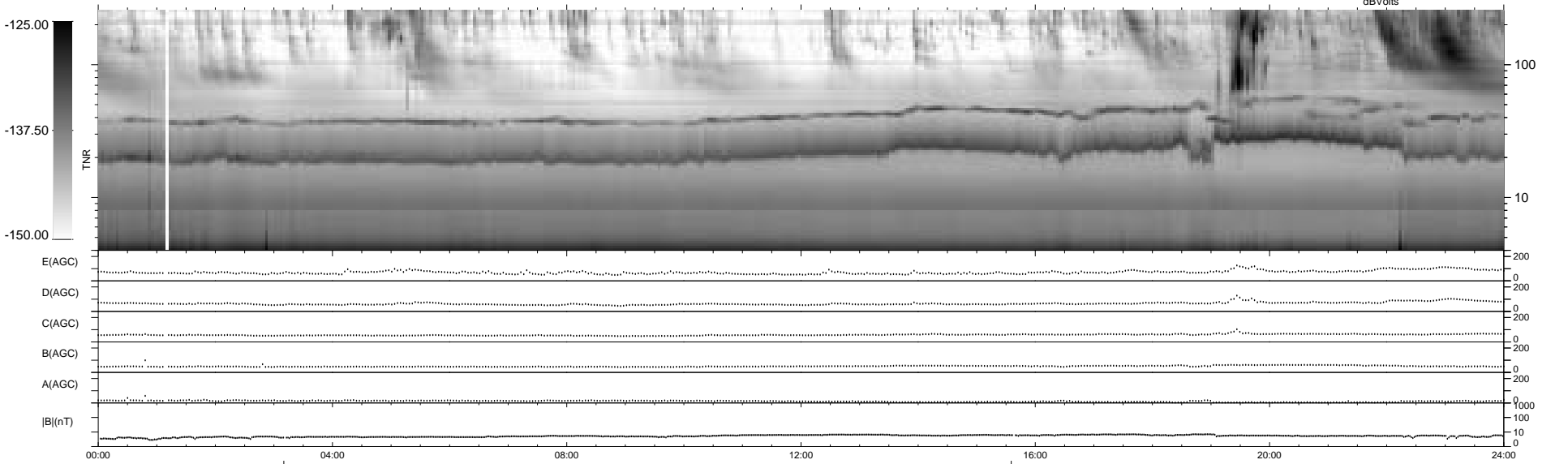
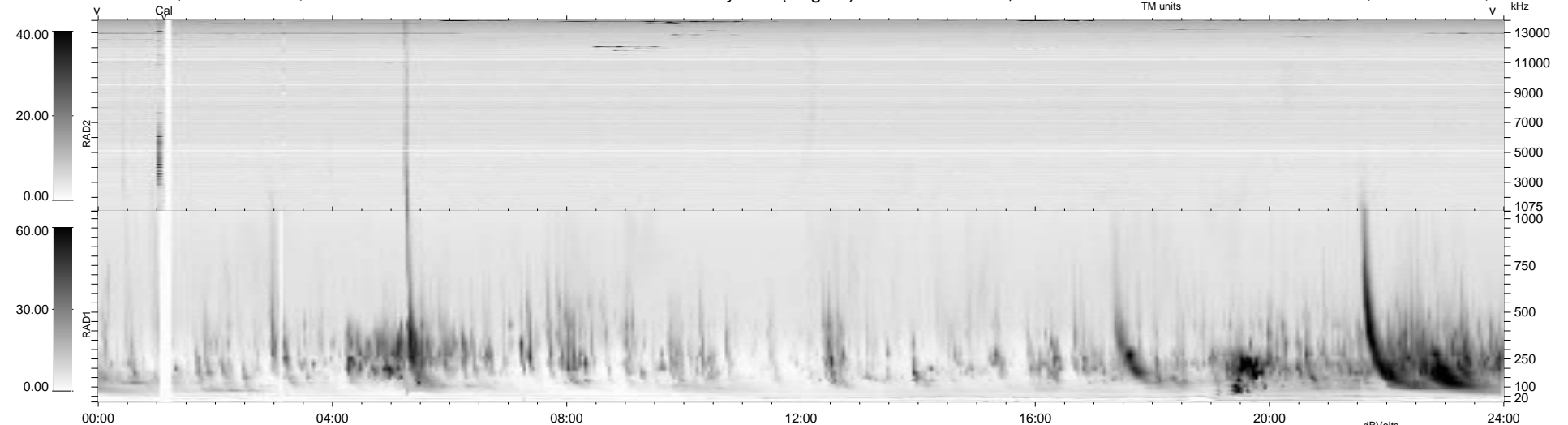


24 bad + 914 good MF/940MF projected (97%) - 2 missing MFs  
 Avg interval = 180 secs  
 Re = 72.71 (72.23, -0.24, 8.32 GSE)

1.7d VMS-SunOS LZ version = v01

WIND/WAVES Summary Plot (Page 1) for 31-OCT-1998, DOY = 304

DAILY Tue Sep 16, 2008  
 Re = 78.57 (78.03, 2.18, 8.96 GSE)



```

RAD2
Antenna Ey .....
Mode LIN(1) .....
SUM/SEP SUM .....
Toggle OFF .....

RAD1
Antenna Ex .....
Mode LIS(2,3) .....
SUM/SEP SUM .....
Toggle OFF .....

TNR
Antenna ExEy .....
Mode A-32 .....
Sweep ABCDE .....
  
```