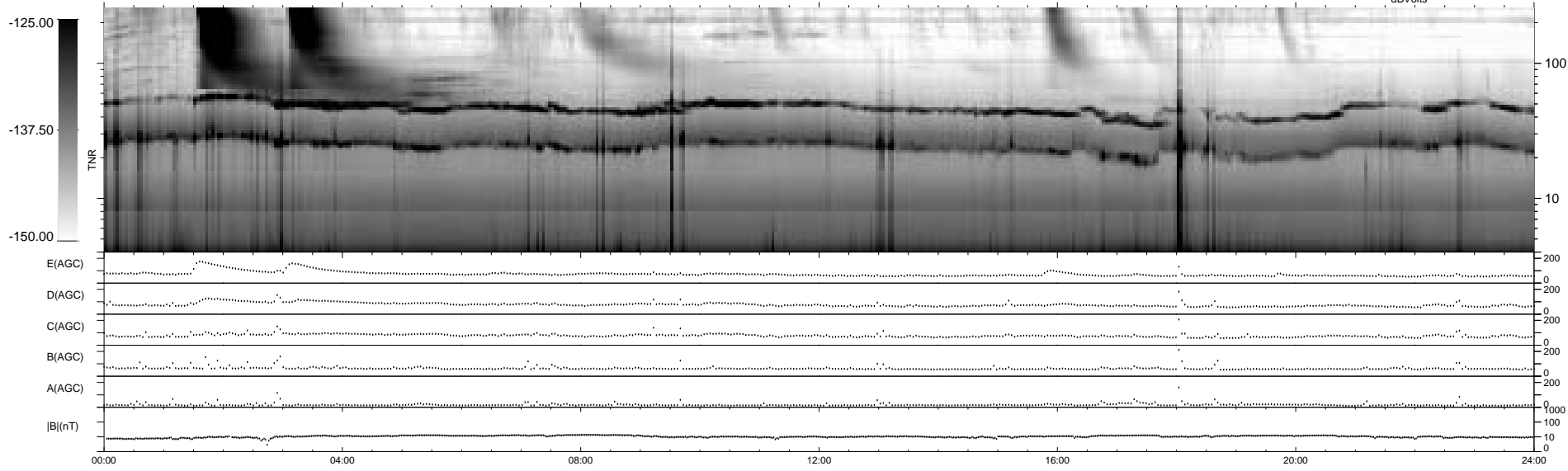
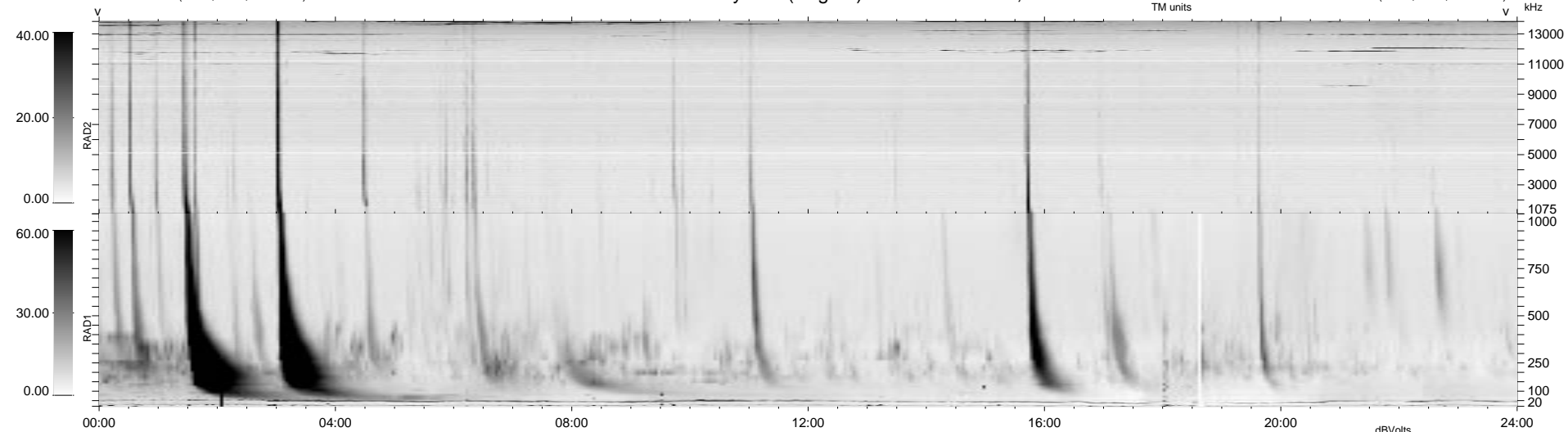


15 bad + 924 good MF/939MF projected (98%) - 0 missing MFs
 Avg interval = 180 secs
 Re = - 40.95 (39.75, -8.73, 4.53 GSE)

1.7d VMS-SunOS LZ version = v01

WIND/WAVES Summary Plot (Page 1) for 28-OCT-1998, DOY = 301

DAILY Tue Sep 16, 2008
 Re = 54.55 (53.88, -5.86, 6.19 GSE)



RAD2
 Antenna Ey
 Mode LIN(1)
 SUM/SEP SUM
 Toggle OFF
 RAD1
 Antenna Ex
 Mode LIS(2,3)
 SUM/SEP SUM
 Toggle OFF
 TNR
 Antenna ExEy
 Mode A-32
 Sweep ABCDE