

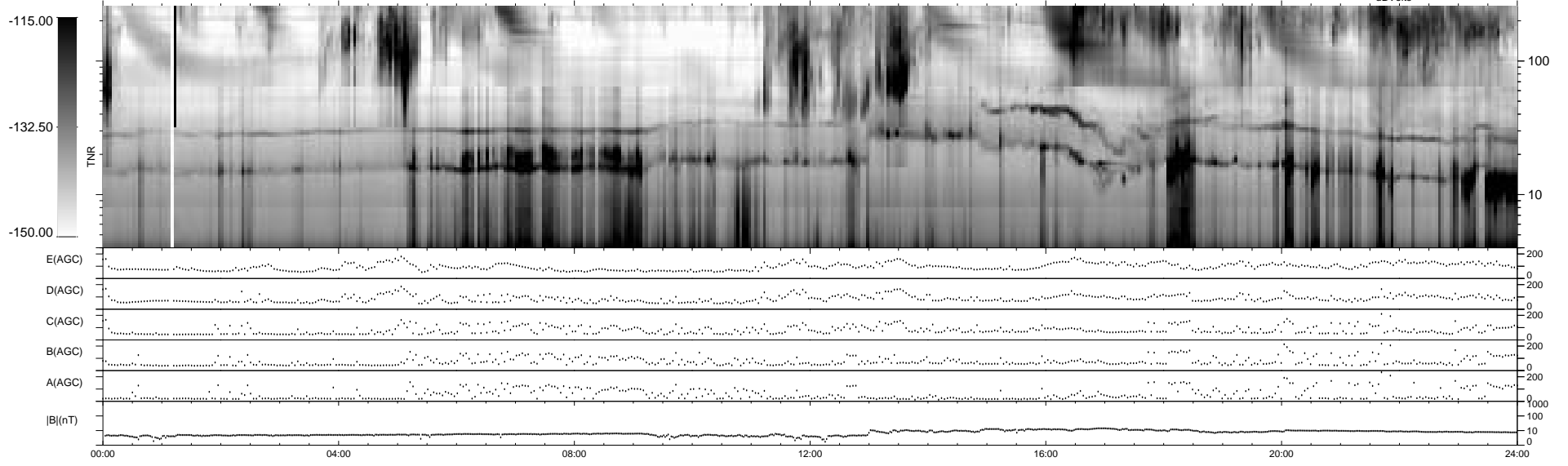
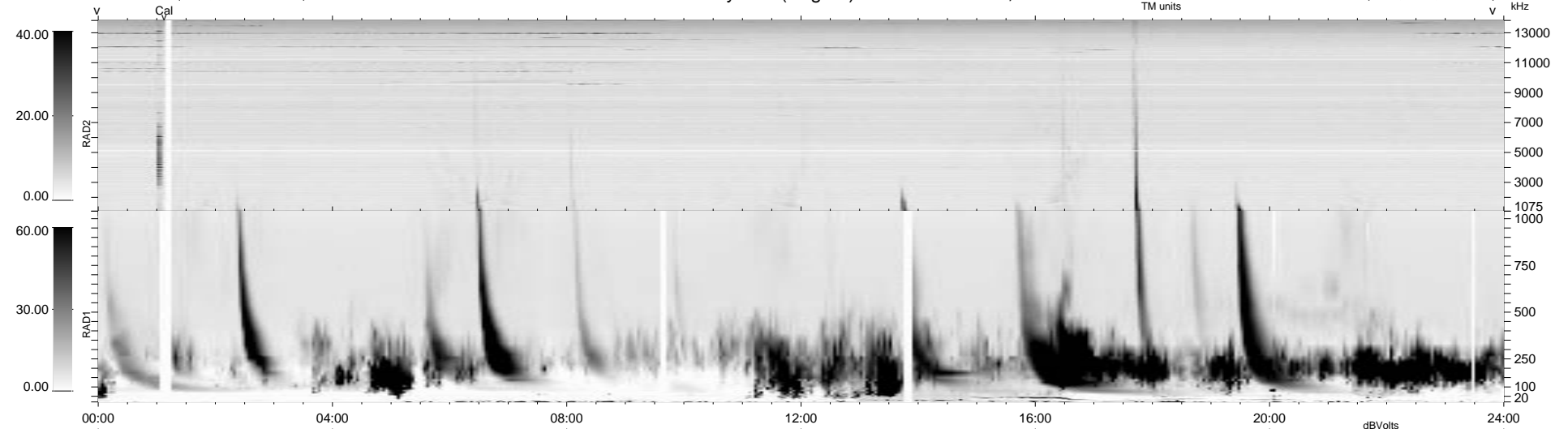
15 bad + 925 good MF/940MF projected (98%) - 0 missing MFs
 Avg interval = 180 secs
 Re = 66.11 (55.49, 35.35, 6.46 GSE)

1.7d VMS-SunOS LZ version = v01

DAILY Tue Sep 16, 2008

Re = 53.21 (42.36, 31.76, 5.34 GSE)

WIND/WAVES Summary Plot (Page 1) for 23-OCT-1998, DOY = 296



```

RAD2
Antenna Ey .....
Mode LIN(1) .....
SUM/SEP SUM .....
Toggle OFF .....

RAD1
Antenna Ex .....
Mode LIS(2,3) .....
SUM/SEP SUM .....
Toggle OFF .....

TNR
Antenna ExEy .....
Mode A-32 .....
Sweep ABCDE .....
  
```