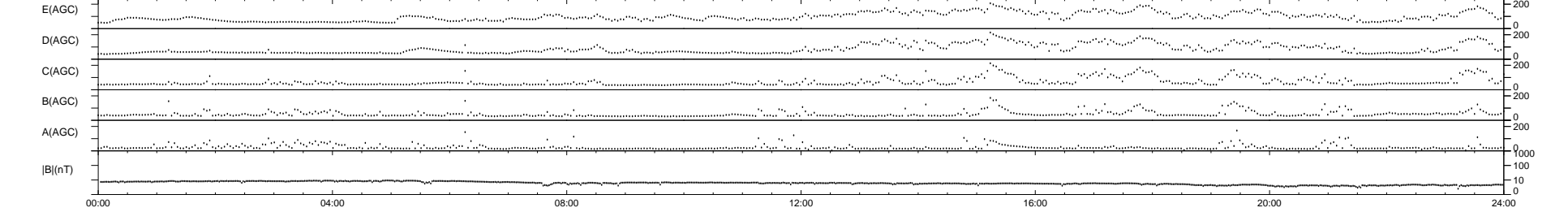
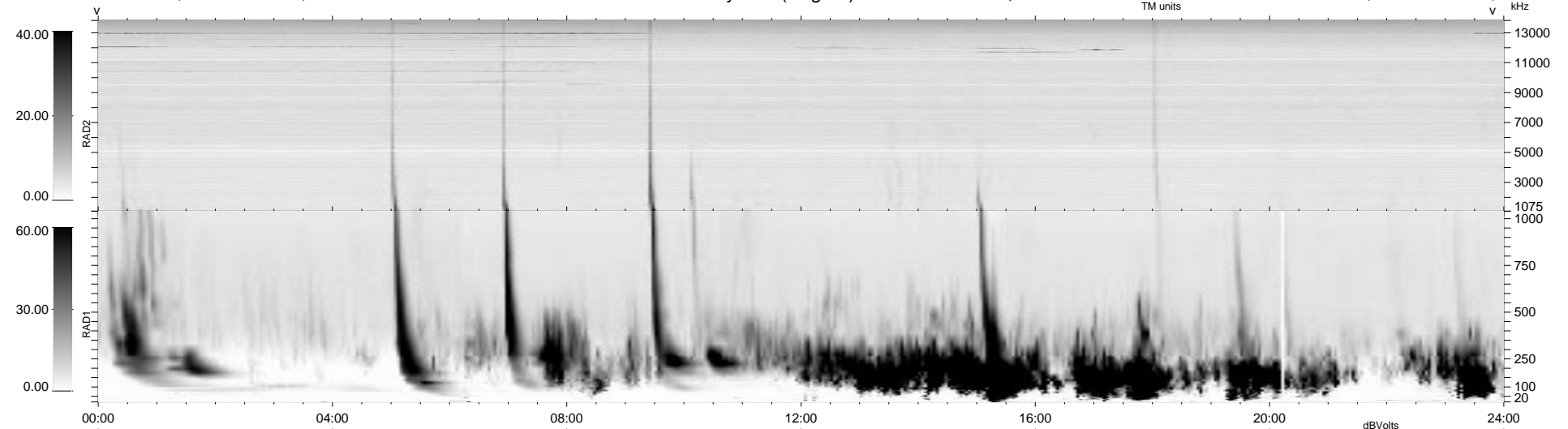


37 bad + 902 good MF/939MF projected (96%) - 0 missing MFs
 Avg interval = 180 secs
 Re = 77.74 (68.85, 35.49, 6.61 GSE)

1.7d VMS-SunOS LZ version = v01
 DAILY Tue Sep 16, 2008
 Re = 66.21 (55.60, 35.37, 6.46 GSE)

WIND/WAVES Summary Plot (Page 1) for 22-OCT-1998, DOY = 295



RAD2
 Antenna Ey
 Mode LIN(1)
 SUM/SEP SUM
 Toggle OFF
 RAD1
 Antenna Ex
 Mode LIS(2,3)
 SUM/SEP SUM
 Toggle OFF
 TNR
 Antenna ExEy
 Mode A-32
 Sweep ABCDE