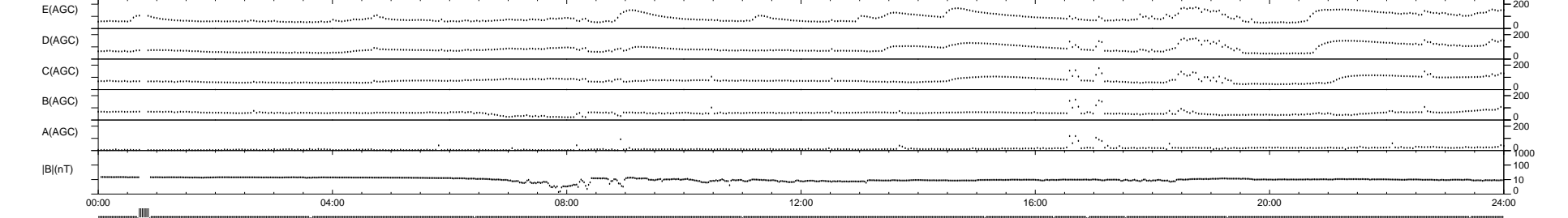
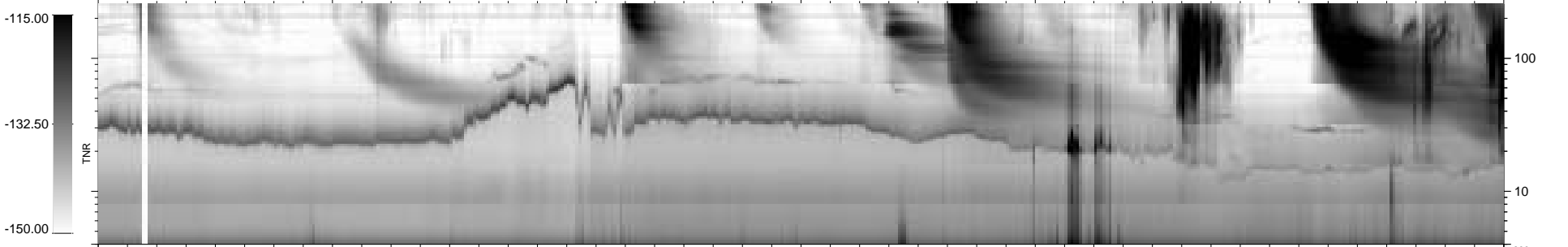
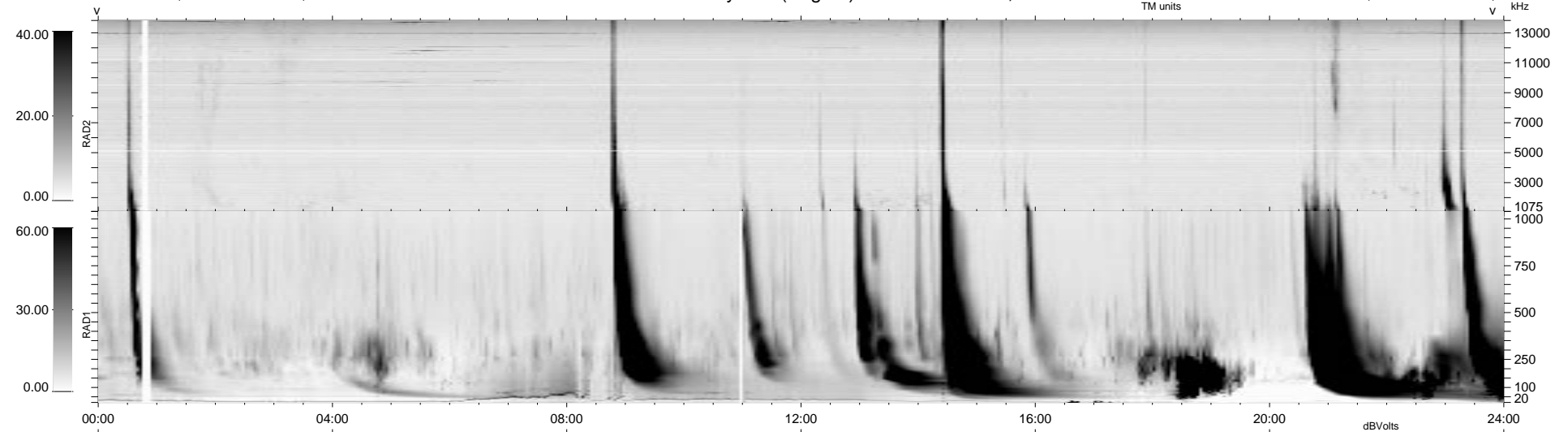


13 bad + 919 good MF/939MF projected (97%) - 7 missing MFs
 Avg interval = 180 secs
 Re = 96.67 (90.49, 33.42, 6.37 GSE)

1.7d VMS-SunOS LZ version = v01

WIND/WAVES Summary Plot (Page 1) for 20-OCT-1998, DOY = 293

DAILY Tue Sep 16, 2008
 Re = 87.81 (80.43, 34.62, 6.55 GSE)



RAD2
 Antenna Ey
 Mode LIN(1)
 SUM/SEP SUM
 Toggle OFF

RAD1
 Antenna Ex
 Mode LIS(2,3)
 SUM/SEP SUM
 Toggle OFF

TNR
 Antenna ExEy
 Mode A-32
 Sweep ABCDE