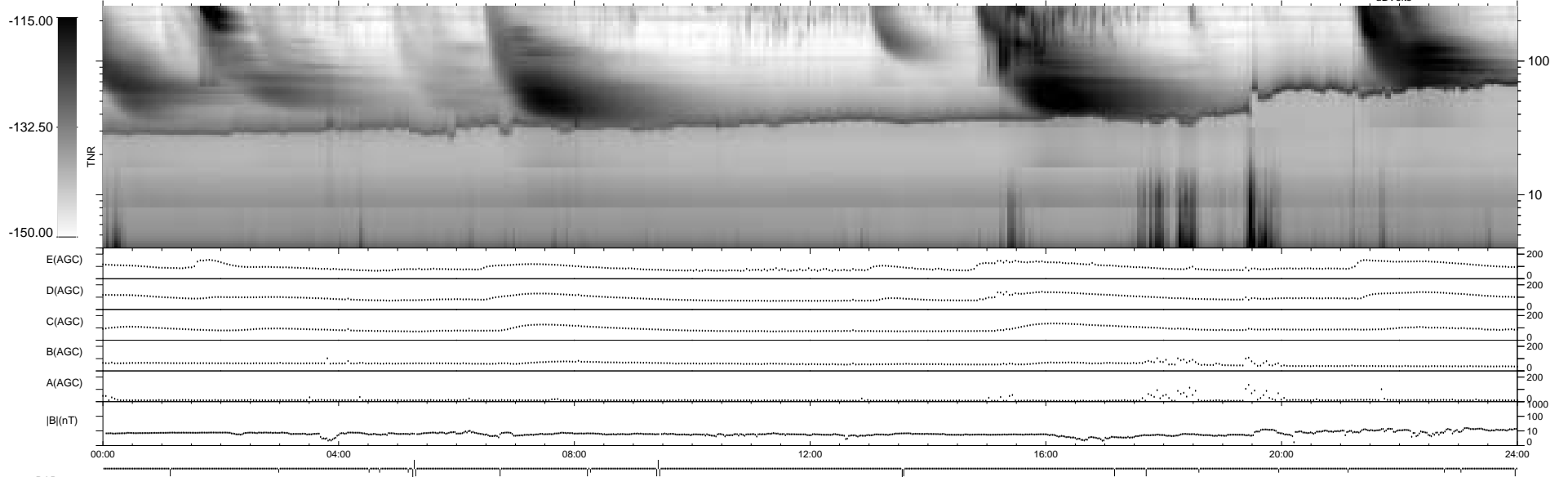
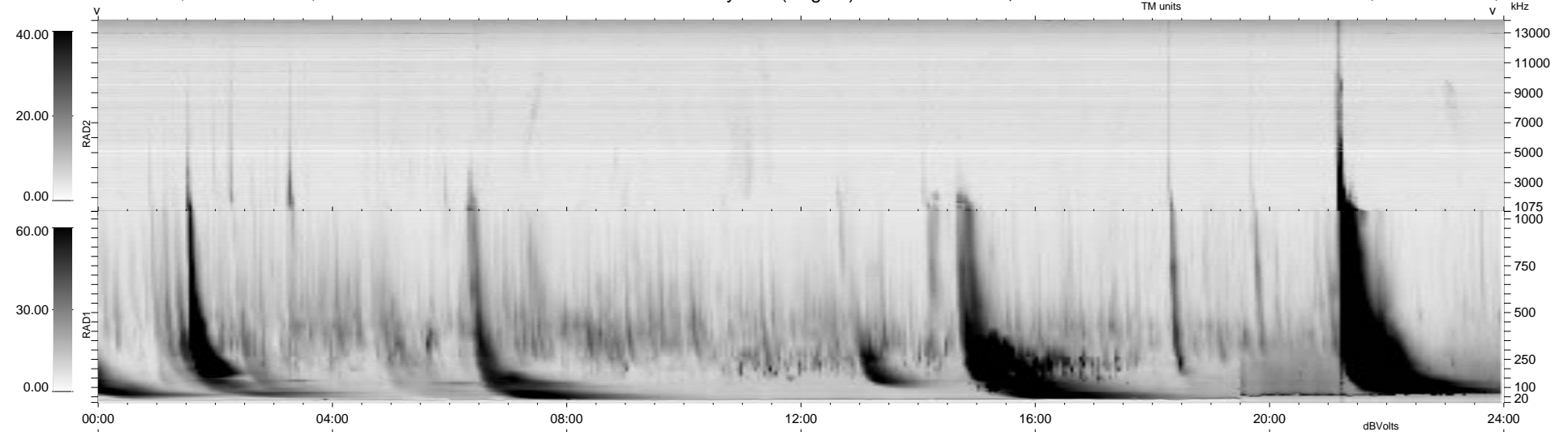


22 bad + 915 good MF/939MF projected (97%) - 2 missing MFs
 Avg interval = 180 secs
 Re = 112.07 (107.64, 30.65, 5.75 GSE)

1.7d VMS-SunOS LZ version = v01
 DAILY Tue Sep 16, 2008
 Re = 104.79 (99.58, 32.05, 6.09 GSE)

WIND/WAVES Summary Plot (Page 1) for 18-OCT-1998, DOY = 291



RAD2
 Antenna Ey
 Mode LIN(1)
 SUM/SEP SUM
 Toggle OFF

RAD1
 Antenna Ex
 Mode LIS(2,3)
 SUM/SEP SUM
 Toggle OFF

TNR
 Antenna ExEy
 Mode A-32
 Sweep ABCDE