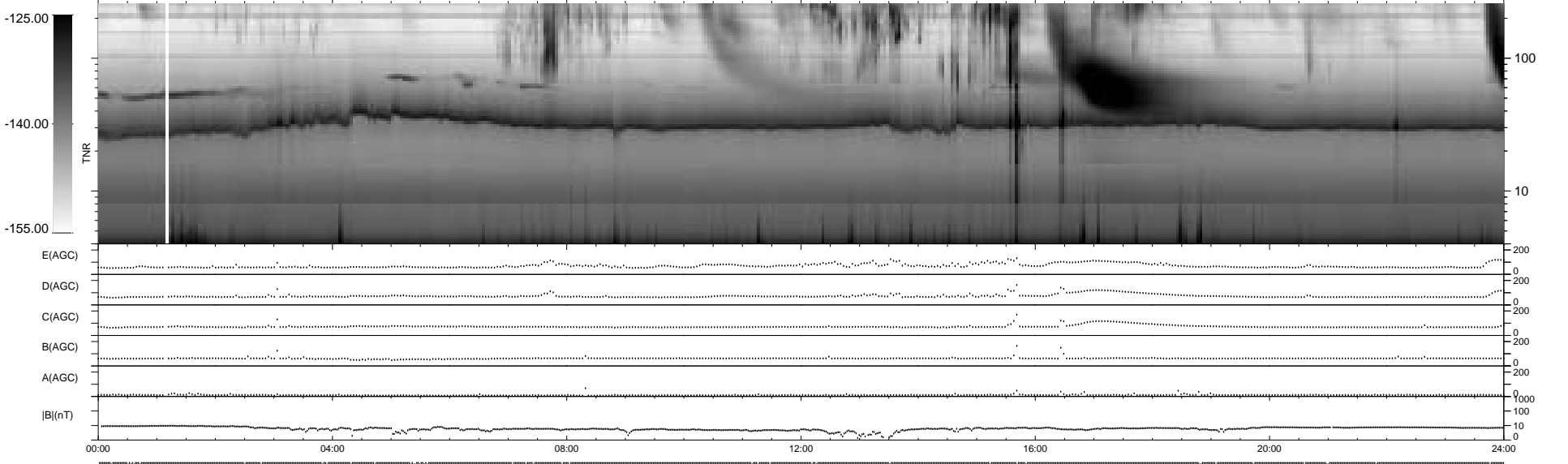
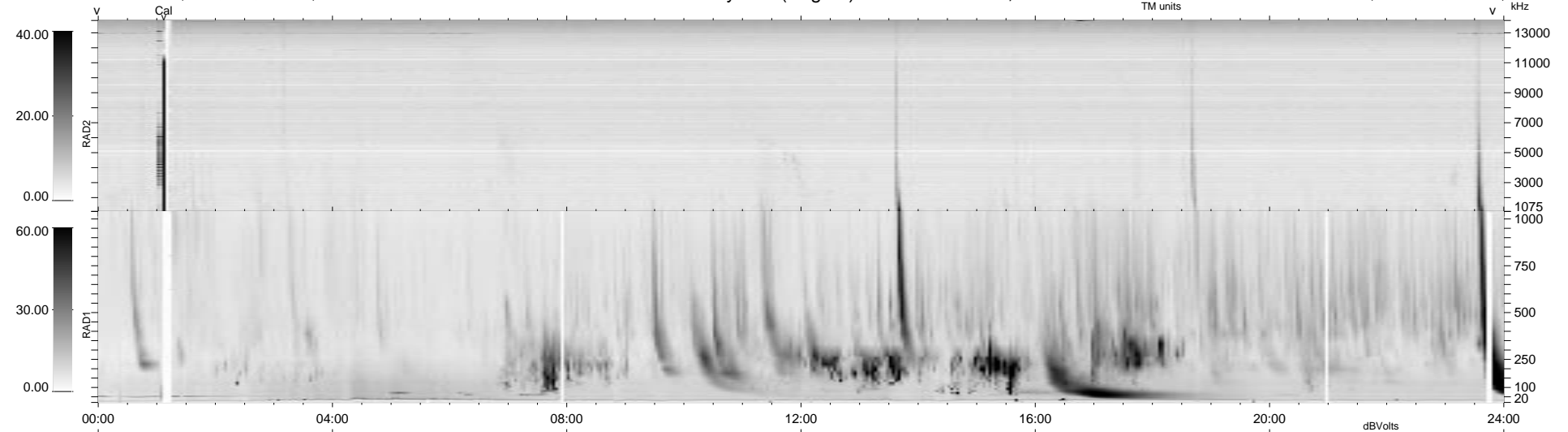


40 bad + 899 good MF/939MF projected (95%) - 0 missing MFs  
 Avg interval = 180 secs  
 Re = 118.76 (114.98, 29.25, 5.36 GSE)

1.7d VMS-SunOS LZ version = v01  
 DAILY Tue Sep 16, 2008  
 Re = 112.12 (107.69, 30.64, 5.75 GSE)

WIND/WAVES Summary Plot (Page 1) for 17-OCT-1998, DOY = 290



```

RAD2
Antenna Ey .....
Mode LIN(1) .....
SUM/SEP SUM .....
Toggle OFF .....

RAD1
Antenna Ex .....
Mode LIS(2,3) .....
SUM/SEP SUM .....
Toggle OFF .....

TNR
Antenna ExEy .....
Mode A-32 .....
Sweep ABCDE .....
  
```