

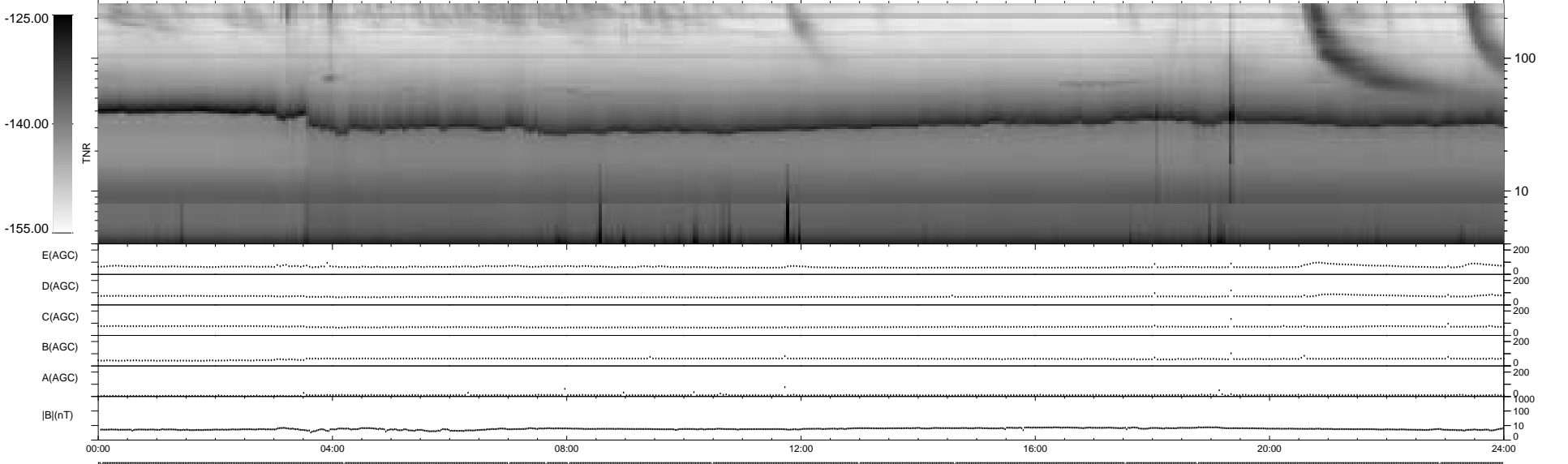
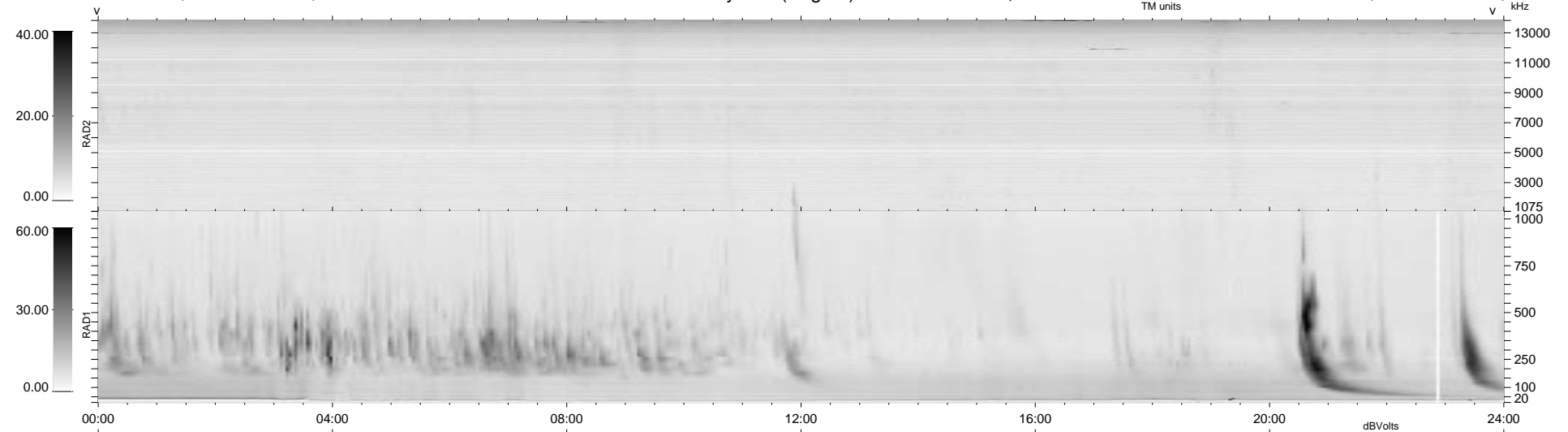
11 bad + 928 good MF/939MF projected (98%) - 0 missing MFs
Avg interval = 180 secs
Re = 135.74 (133.28, 25.43, 3.98 GSE)

1.7d VMS-SunOS

LZ version = v01

WIND/WAVES Summary Plot (Page 1) for 14-OCT-1998, DOY = 287

DAILY Tue Sep 16, 2008
Re = 130.58 (127.76, 26.62, 4.47 GSE)



RAD2
Antenna Ey
Mode LIN(1)
SUM/SEP SUM
Toggle OFF
RAD1
Antenna Ex
Mode LIS(2,3)
SUM/SEP SUM
Toggle OFF
TNR
Antenna ExEy
Mode A-32
Sweep ABCDE