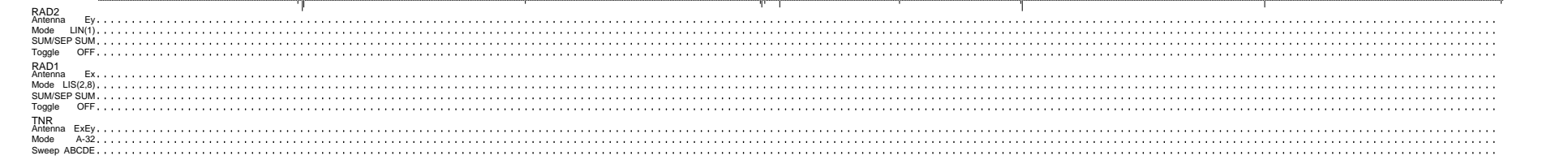
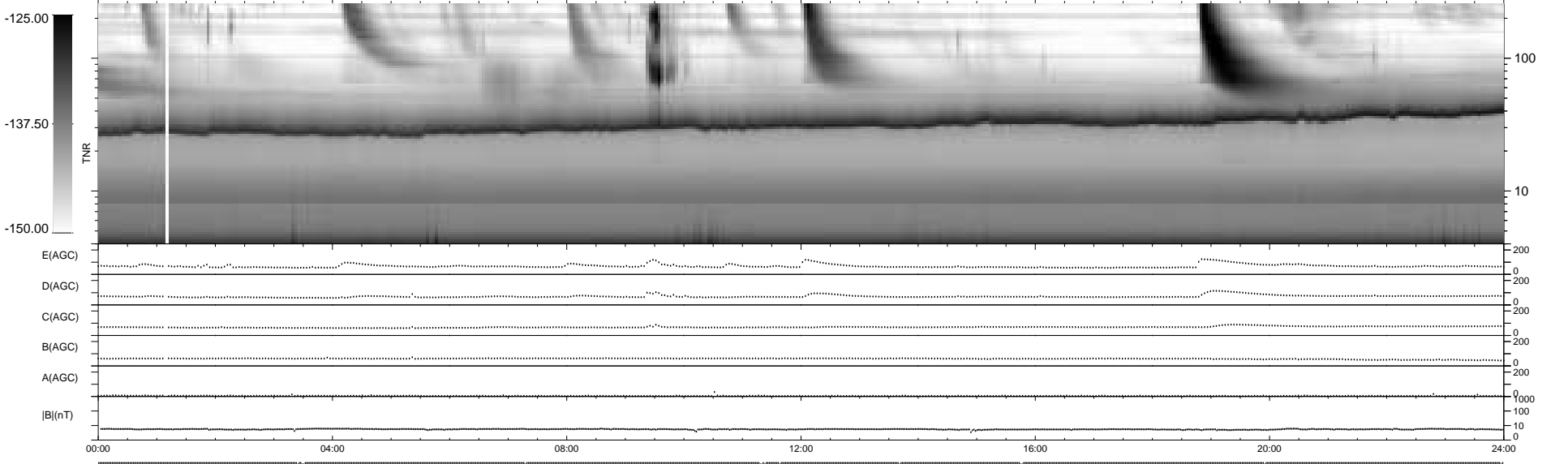
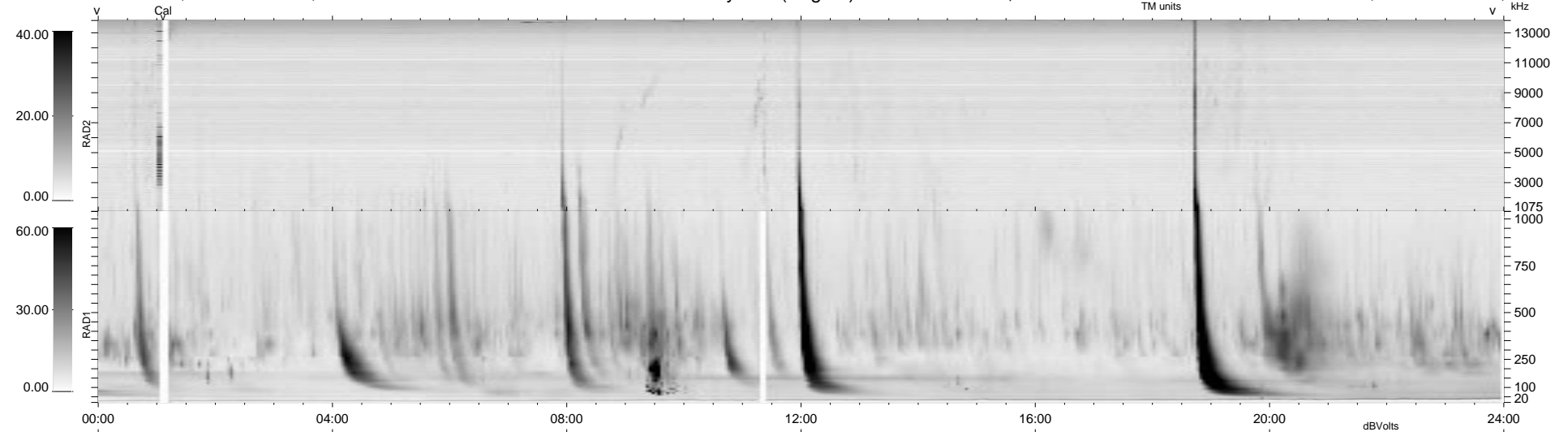


13 bad + 926 good MF/939MF projected (98%) - 0 missing MFs  
 Avg interval = 180 secs  
 Re = 140.53 (138.36, 24.34, 3.48 GSE)

1.7d VMS-SunOS LZ version = v01  
 DAILY Tue Sep 16, 2008  
 Re = 135.77 (133.31, 25.43, 3.98 GSE)

WIND/WAVES Summary Plot (Page 1) for 13-OCT-1998, DOY = 286



RAD2  
 Antenna Ey  
 Mode LIN(1)  
 SUM/SEP SUM  
 Toggle OFF

RAD1  
 Antenna Ex  
 Mode LIS(2,3)  
 SUM/SEP SUM  
 Toggle OFF

TNR  
 Antenna ExEy  
 Mode A-32  
 Sweep ABCDE