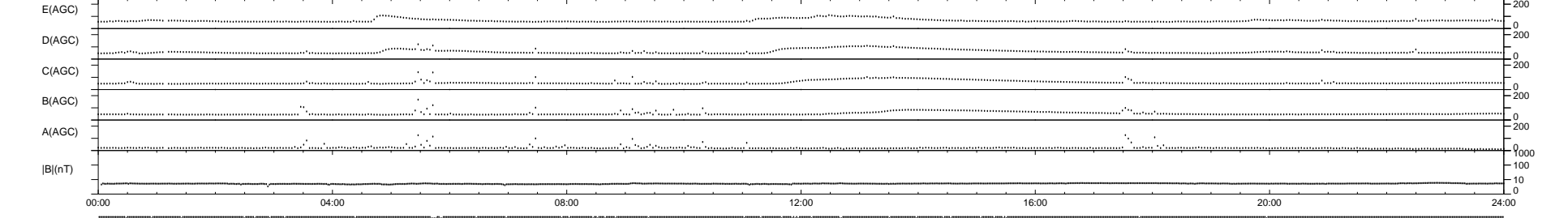
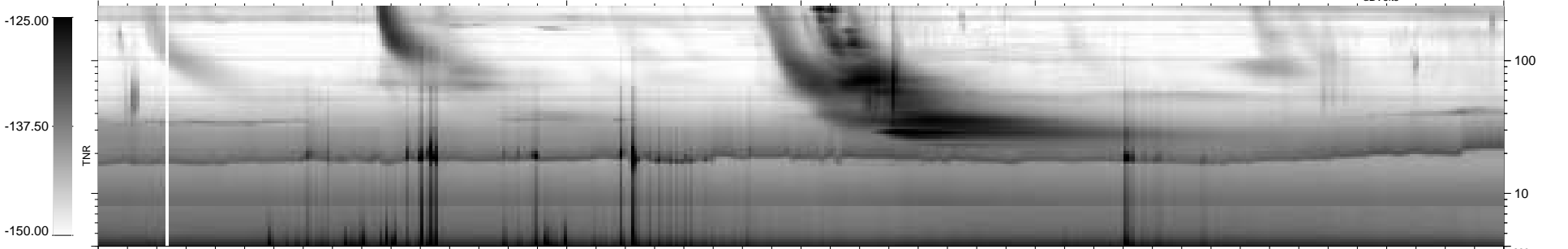
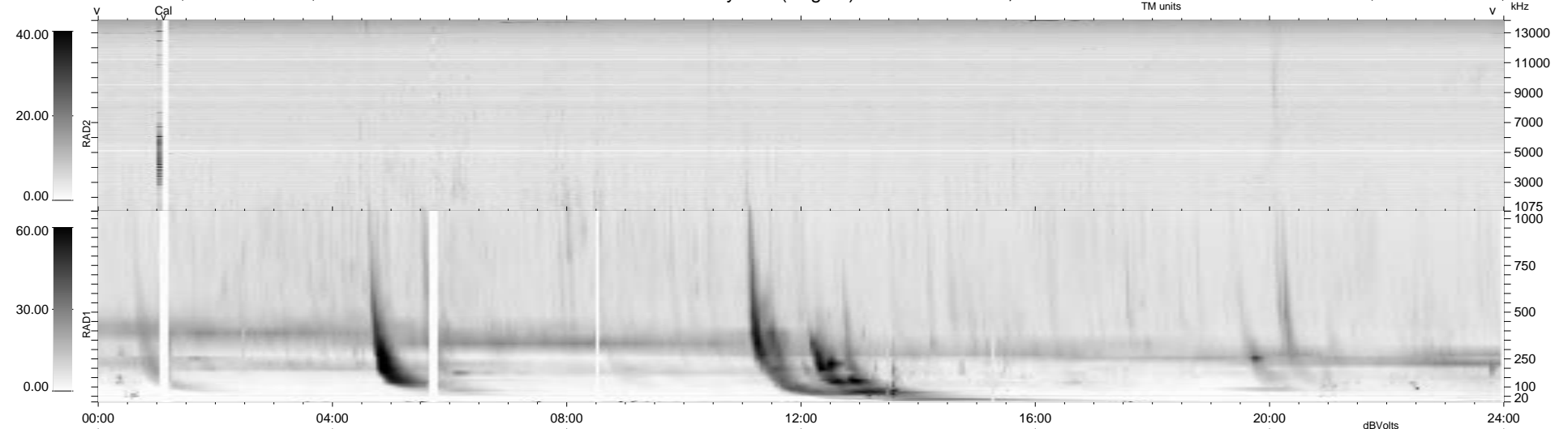


42 bad + 897 good MF/939MF projected (95%) - 0 missing MFs
 Avg interval = 180 secs
 Re = - 149.04 (147.32, 22.45, 2.43 GSE)

1.7d VMS-SunOS LZ version = v01
 DAILY Tue Sep 16, 2008
 Re = 144.99 (143.06, 23.33, 2.95 GSE)

WIND/WAVES Summary Plot (Page 1) for 11-OCT-1998, DOY = 284



RAD2
 Antenna Ey
 Mode LIN(1)
 SUM/SEP SUM
 Toggle OFF
 RAD1
 Antenna Ex
 Mode LIS(2,3)
 SUM/SEP SUM
 Toggle OFF
 TNR
 Antenna ExEy
 Mode A-32
 Sweep ABCDE