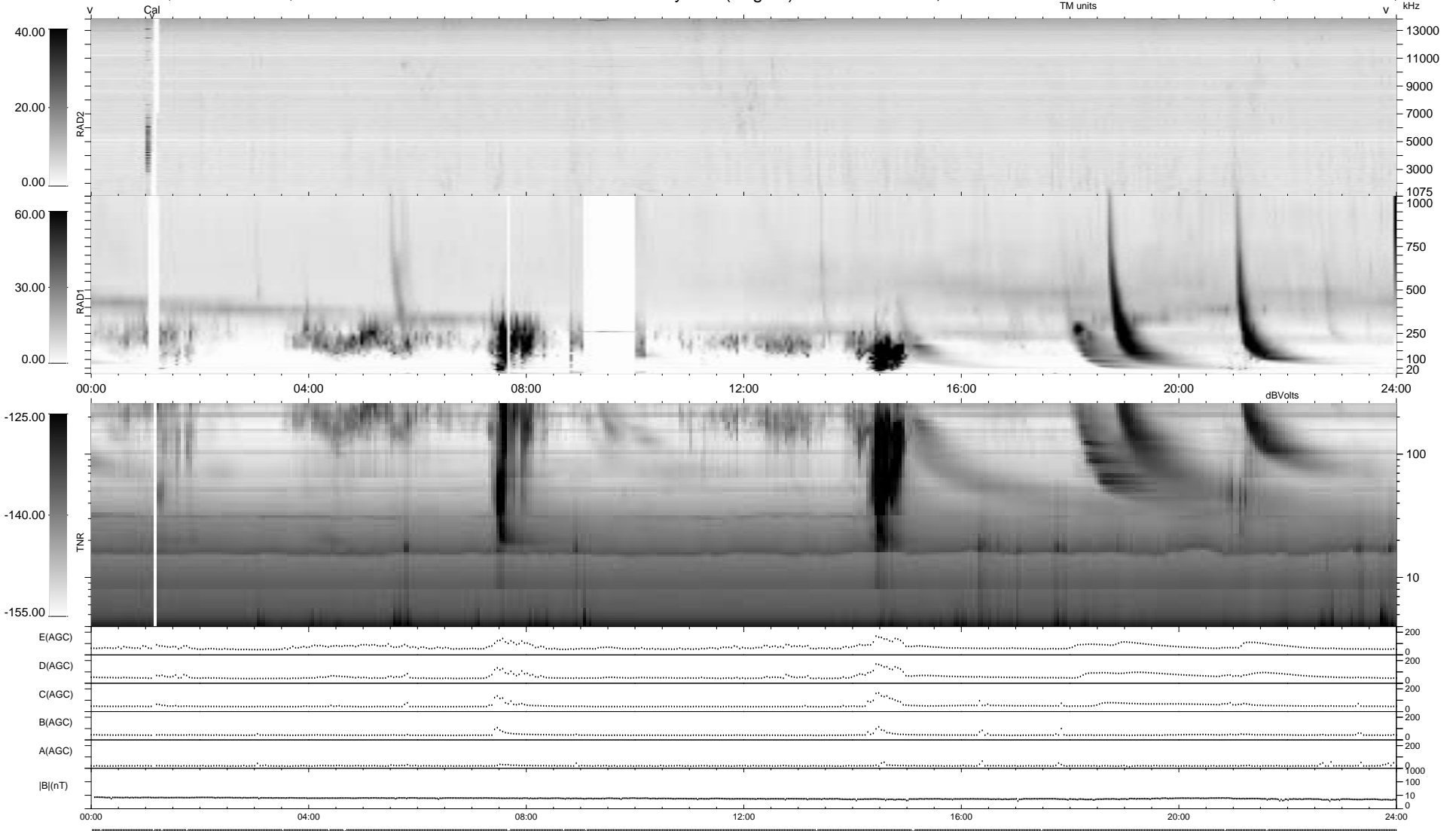


18 bad + 921 good MF/939MF projected (98%) - 0 missing MFs  
 Avg interval = 180 secs  
 Re = - 156.34 (154.92, 20.95, 1.36 GSE)

1.7d VMS-SunOS LZ version = v01  
 DAILY Tue Sep 16, 2008  
 Re = 152.85 (151.30, 21.65, 1.89 GSE)

### WIND/WAVES Summary Plot (Page 1) for 09-OCT-1998, DOY = 282



```

RAD2
Antenna Ey
Mode LIN(1)
SUM/SEP SUM
Toggle OFF

RAD1
Antenna Ex
Mode LIS(2,3)
SUM/SEP SUM
Toggle OFF

TNR
Antenna ExEy
Mode A-32
Sweep ABCDE
  
```