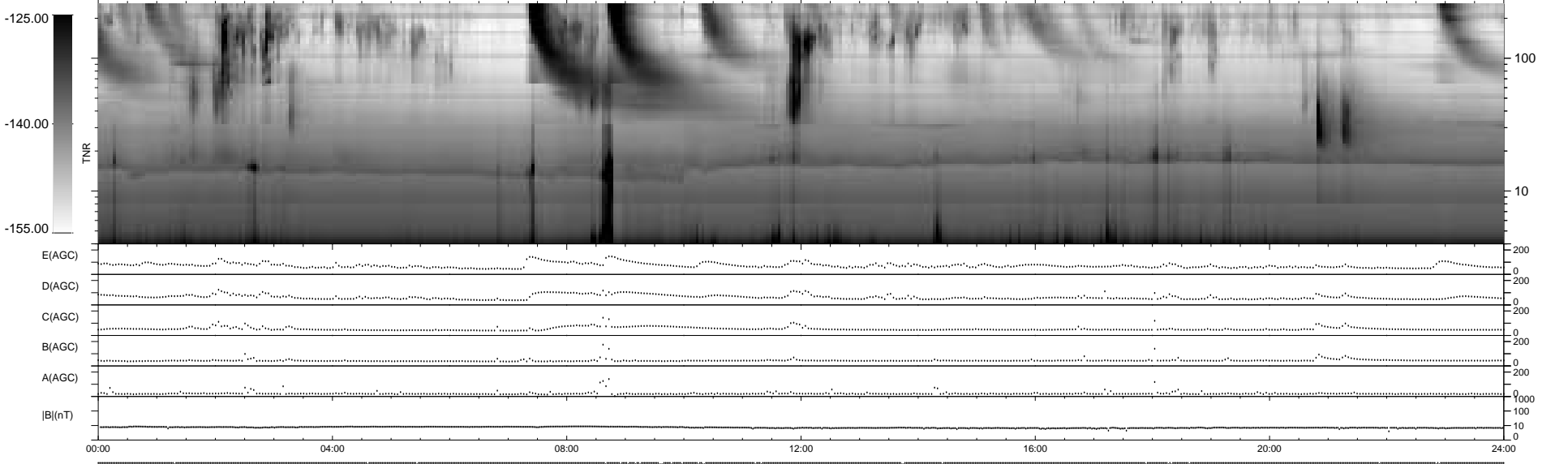
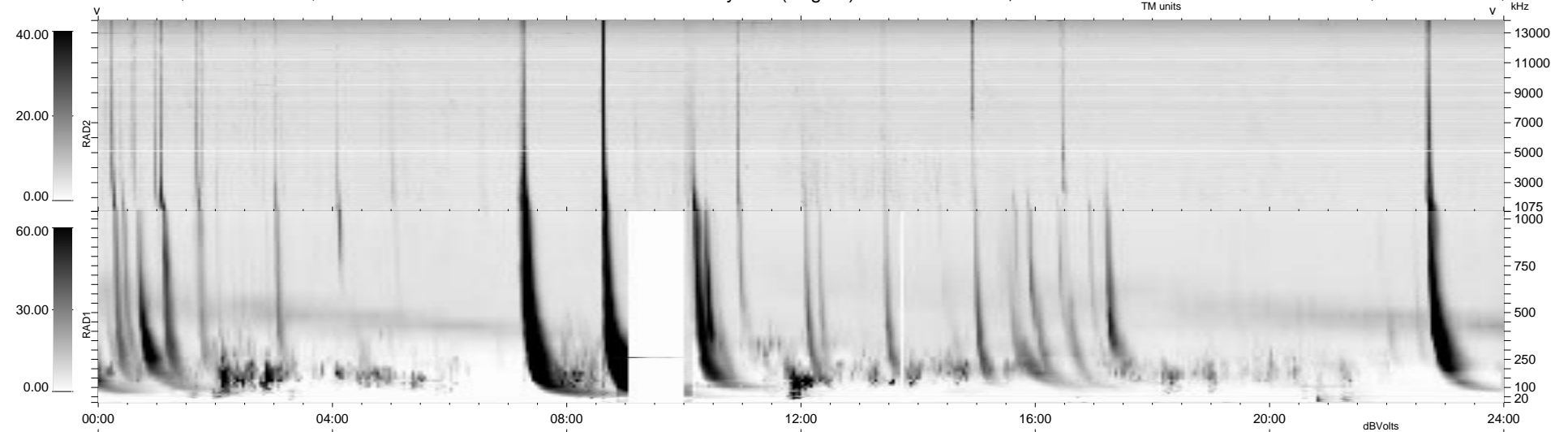


28 bad + 912 good MF/940MF projected (97%) - 0 missing MFs
 Avg interval = 180 secs
 Re = - 159.59 (158.29, 20.34, 0.82 GSE)

1.7d VMS-SunOS LZ version = v01
 DAILY Tue Sep 16, 2008
 Re = 156.36 (154.94, 20.95, 1.35 GSE)

WIND/WAVES Summary Plot (Page 1) for 08-OCT-1998, DOY = 281



```

RAD2
Antenna Ey .....
Mode LIN(1) .....
SUM/SEP SUM .....
Toggle OFF .....

RAD1
Antenna Ex .....
Mode LIS(2,8) .....
SUM/SEP SUM .....
Toggle OFF .....

TNR
Antenna ExEy .....
Mode A-32 .....
Sweep ABCDE .....
  
```