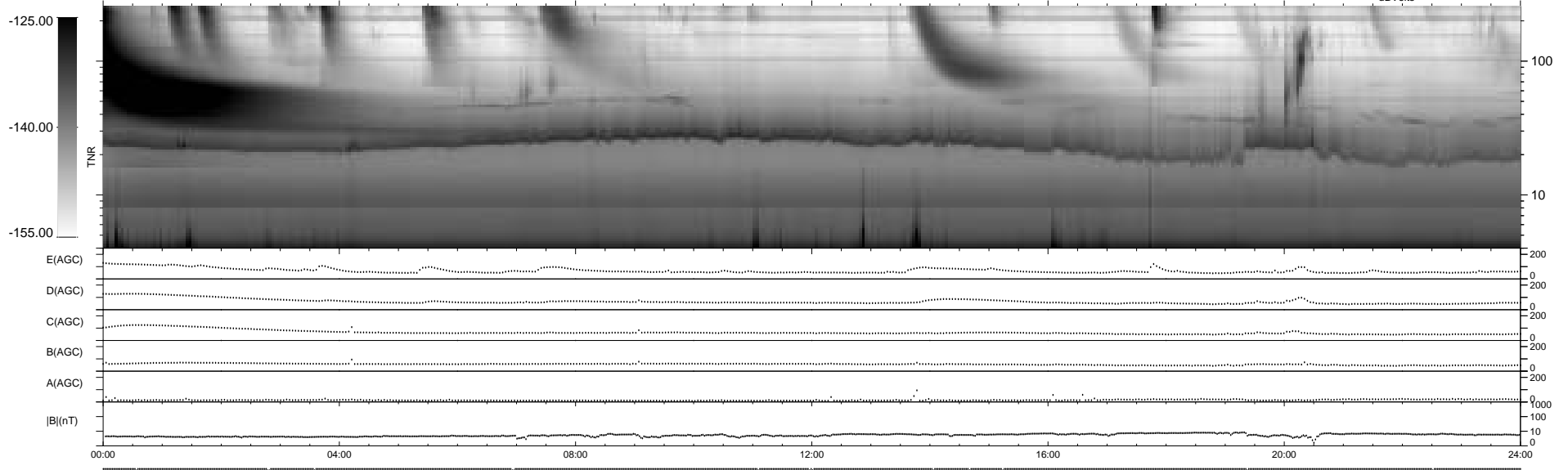
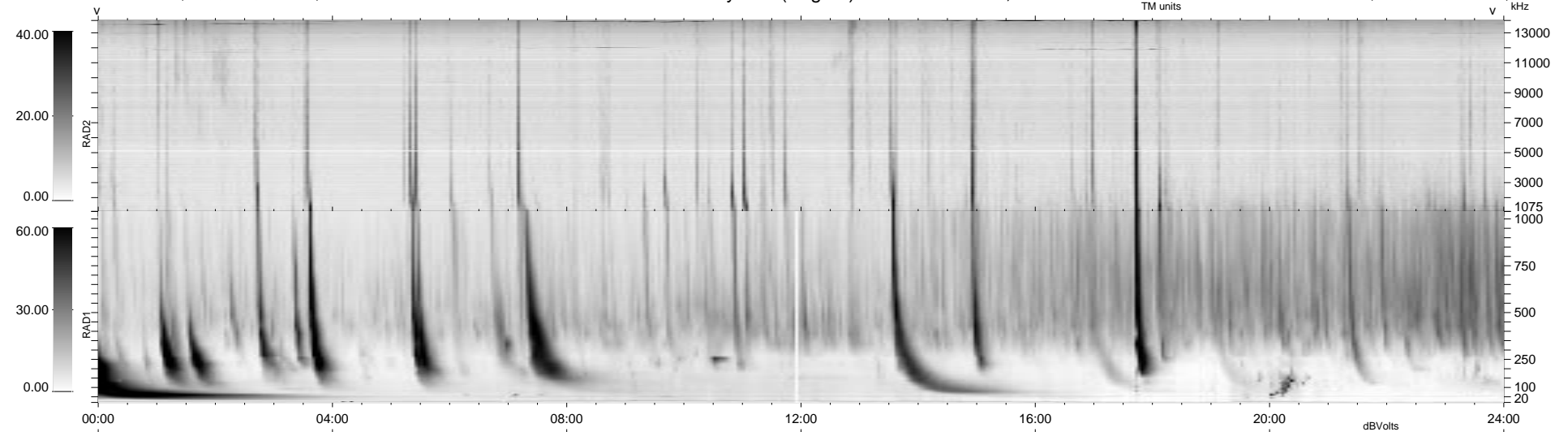


14 bad + 926 good MF/940MF projected (98%) - 0 missing MFs
 Avg interval = 180 secs
 Re = - 185.33 (184.73, 13.03, -7.18 GSE)

1.7d VMS-SunOS LZ version = v01
 DAILY Tue Sep 16, 2008
 Re = 185.11 (184.48, 13.61, -6.74 GSE)

WIND/WAVES Summary Plot (Page 1) for 22-SEP-1998, DOY = 265



RAD2
 Antenna Ey
 Mode LIN(1)
 SUM/SEP SUM
 Toggle OFF
 RAD1
 Antenna Ex
 Mode LIS(2,3)
 SUM/SEP SUM
 Toggle OFF
 TNR
 Antenna ExEy
 Mode A-32
 Sweep ABCDE