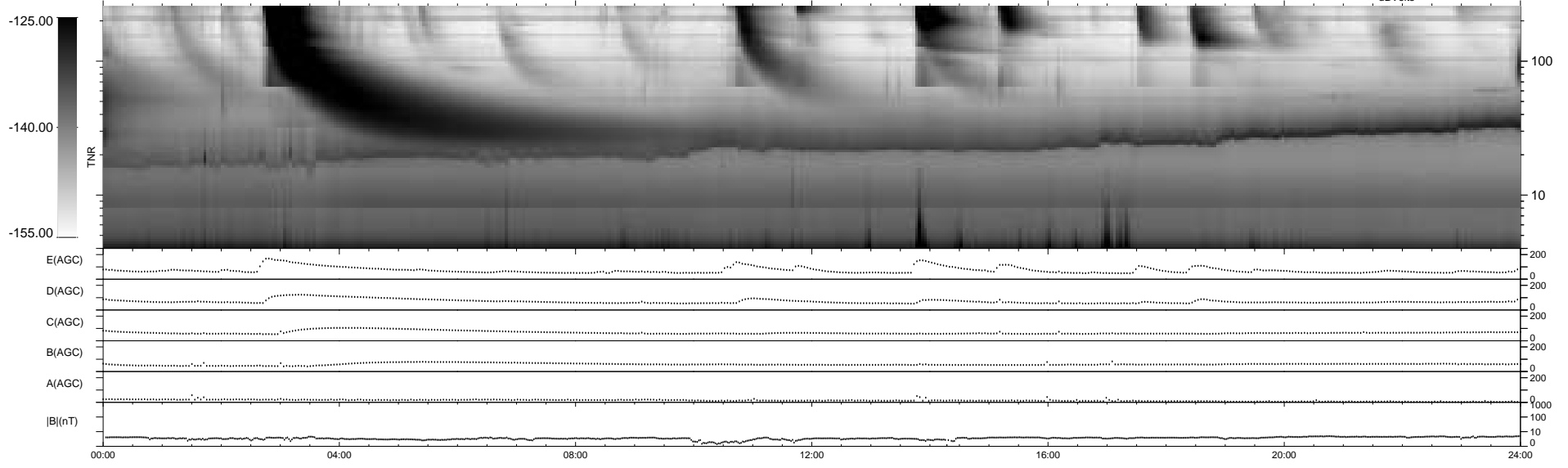
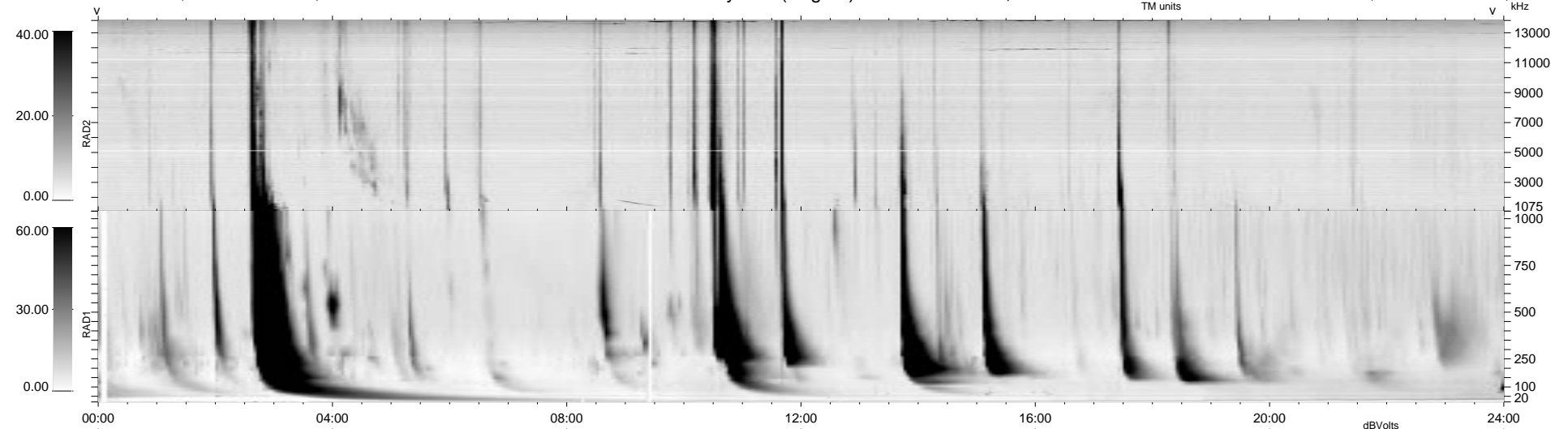


21 bad + 918 good MF/939MF projected (97%) - 0 missing MFs
 Avg interval = 180 secs
 Re = - 185.19 (184.65, 11.70, -7.84 GSE)

1.7d VMS-SunOS LZ version = v01
 DAILY Tue Sep 16, 2008
 Re = 185.35 (184.78, 12.38, -7.54 GSE)

WIND/WAVES Summary Plot (Page 1) for 20-SEP-1998, DOY = 263



RAD2
 Antenna Ey
 Mode LIN(1)
 SUM/SEP SUM
 Toggle OFF

RAD1
 Antenna Ex
 Mode LIS(2,3)
 SUM/SEP SUM
 Toggle OFF

TNR
 Antenna ExEy
 Mode A-32
 Sweep ABCDE