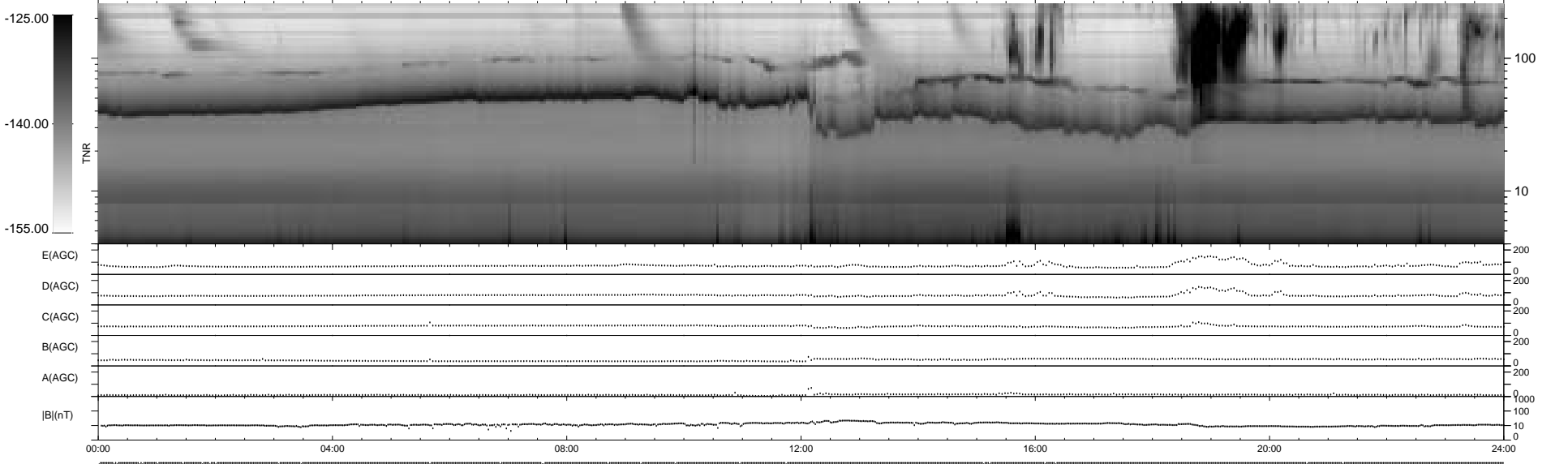
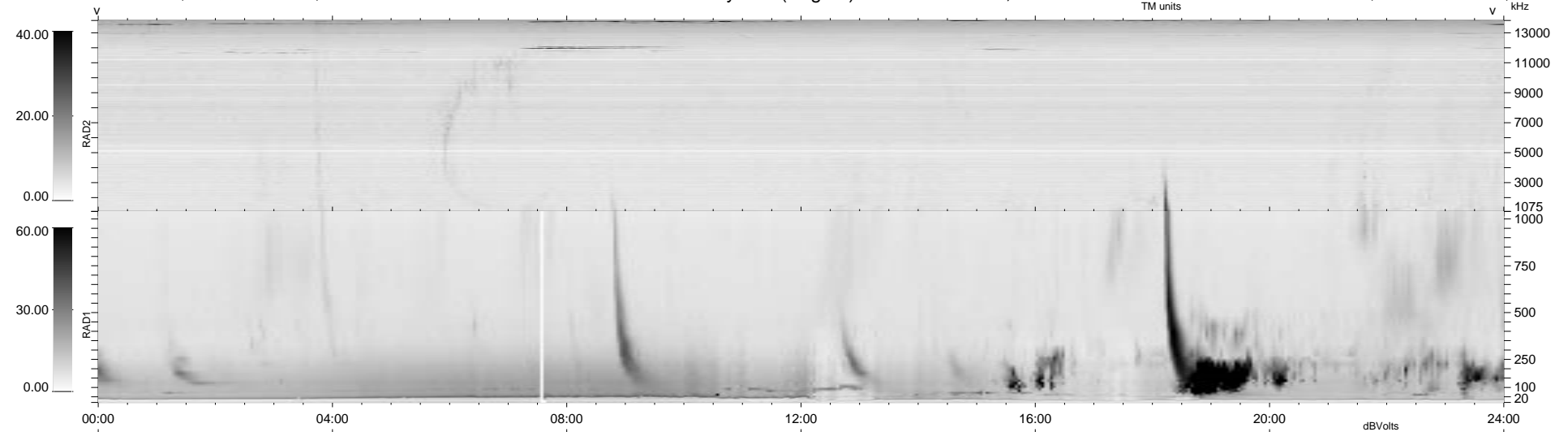


27 bad + 912 good MF/939MF projected (97%) - 0 missing MFs
 Avg interval = 180 secs
 Re = - 184.29 (183.81, 10.25, -8.42 GSE)

1.7d VMS-SunOS LZ version = v01
 DAILY Tue Sep 16, 2008
 Re = 184.83 (184.32, 10.98, -8.14 GSE)

WIND/WAVES Summary Plot (Page 1) for 18-SEP-1998, DOY = 261



```

RAD2
Antenna Ey .....
Mode LIN(1) .....
SUM/SEP SUM .....
Toggle OFF .....
RAD1
Antenna Ex .....
Mode LIS(2,3) .....
SUM/SEP SUM .....
Toggle OFF .....
TNR
Antenna ExEy .....
Mode A-32 .....
Sweep ABCDE .....
  
```