

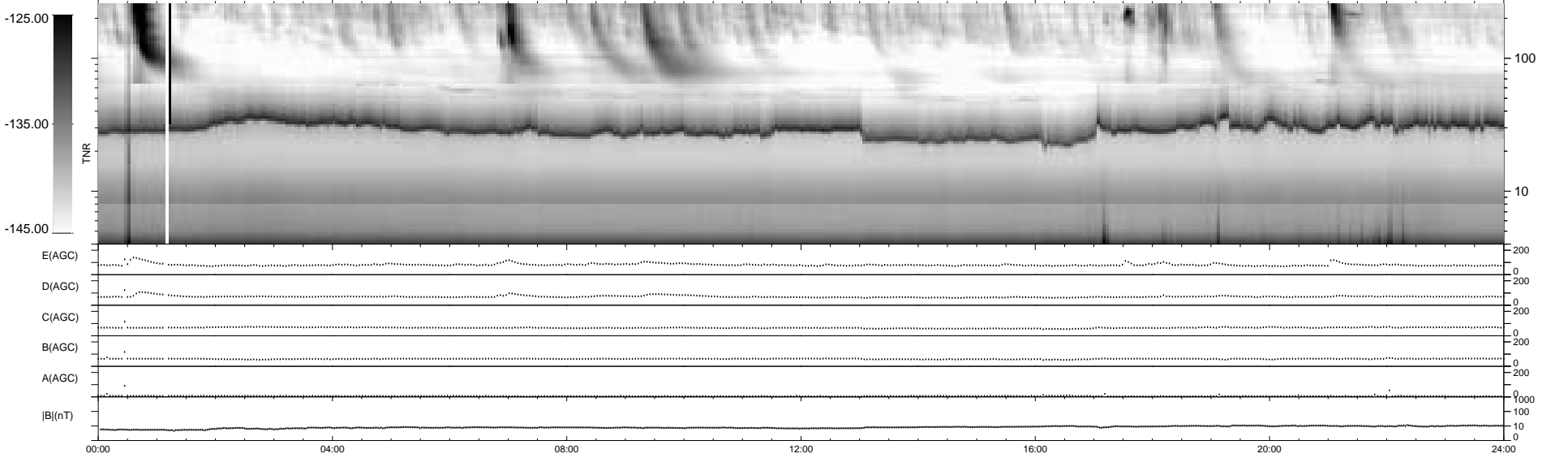
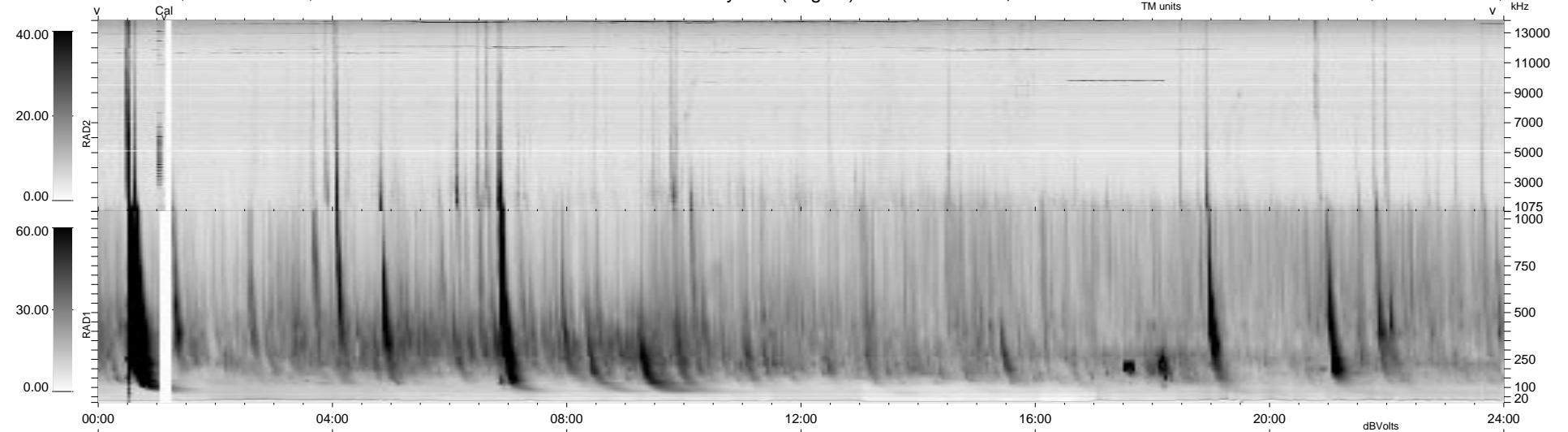
18 bad + 922 good MF/940MF projected (98%) - 0 missing MFs
 Avg interval = 180 secs
 Re = 166.55 (166.25, 0.29, -9.94 GSE)

1.7d VMS-SunOS

LZ version = v01

WIND/WAVES Summary Plot (Page 1) for 07-SEP-1998, DOY = 250

DAILY Tue Sep 16, 2008
 Re = 169.00 (168.71, 1.40, -9.93 GSE)



RAD2
 Antenna Ey
 Mode LIN(1)
 SUM/SEP SUM
 Toggle OFF
 RAD1
 Antenna Ex
 Mode LIS(2,3)
 SUM/SEP SUM
 Toggle OFF
 TNR
 Antenna ExEy
 Mode A-32
 Sweep ABCDE