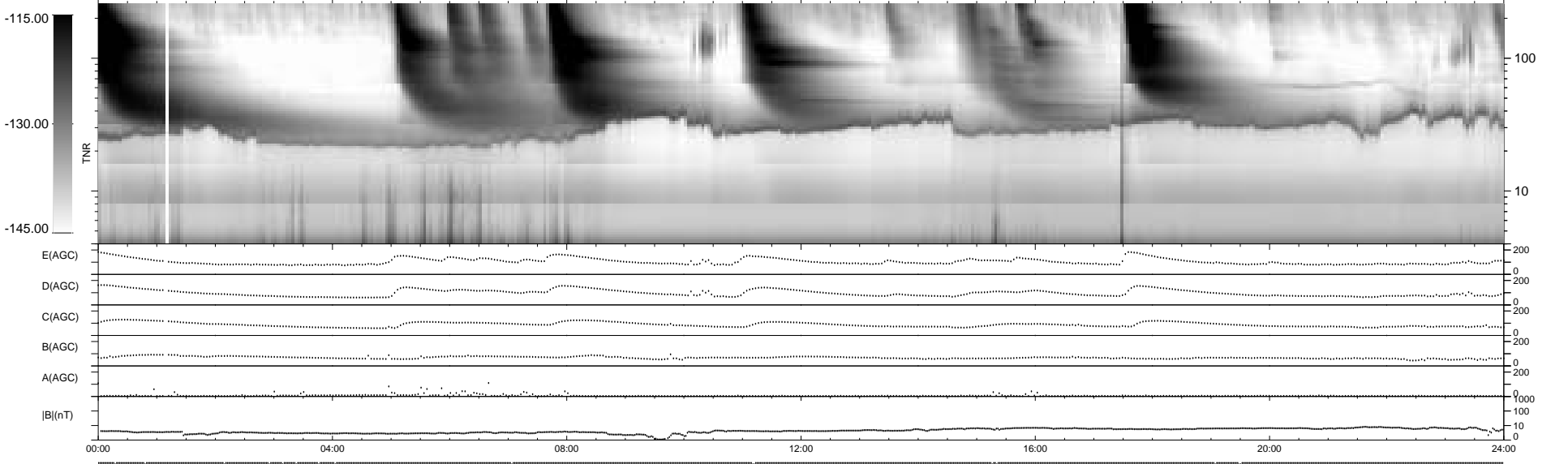
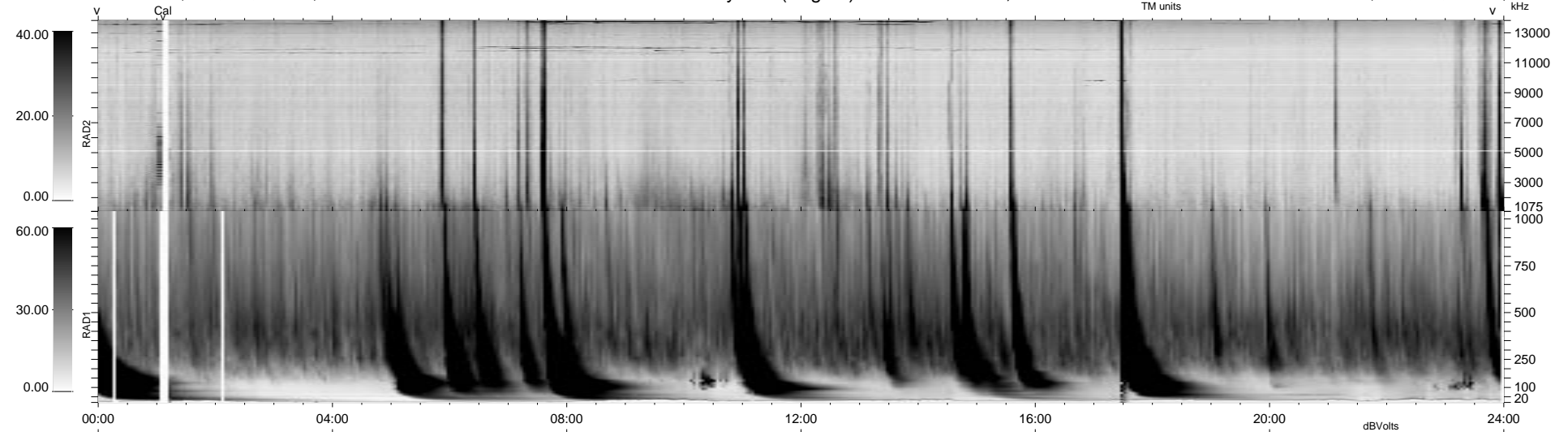


16 bad + 923 good MF/939MF projected (98%) - 0 missing MFs  
 Avg interval = 180 secs  
 Re = 161.04 (160.73, -2.23, -9.86 GSE)

1.7d VMS-SunOS LZ version = v01  
 DAILY Tue Sep 16, 2008  
 Re = 163.87 (163.57, -0.93, -9.91 GSE)

WIND/WAVES Summary Plot (Page 1) for 05-SEP-1998, DOY = 248



E(AGC) 0 200  
 D(AGC) 0 200  
 C(AGC) 0 200  
 B(AGC) 0 200  
 A(AGC) 0 200  
 |B|(nT) 0 1000  
 0 100  
 0 10

RAD2  
 Antenna Ey  
 Mode LIN(1)  
 SUM/SEP SUM  
 Toggle OFF

RAD1  
 Antenna Ex  
 Mode LIS(2,3)  
 SUM/SEP SUM  
 Toggle OFF

TNR  
 Antenna ExEy  
 Mode A-32  
 Sweep ABCDE