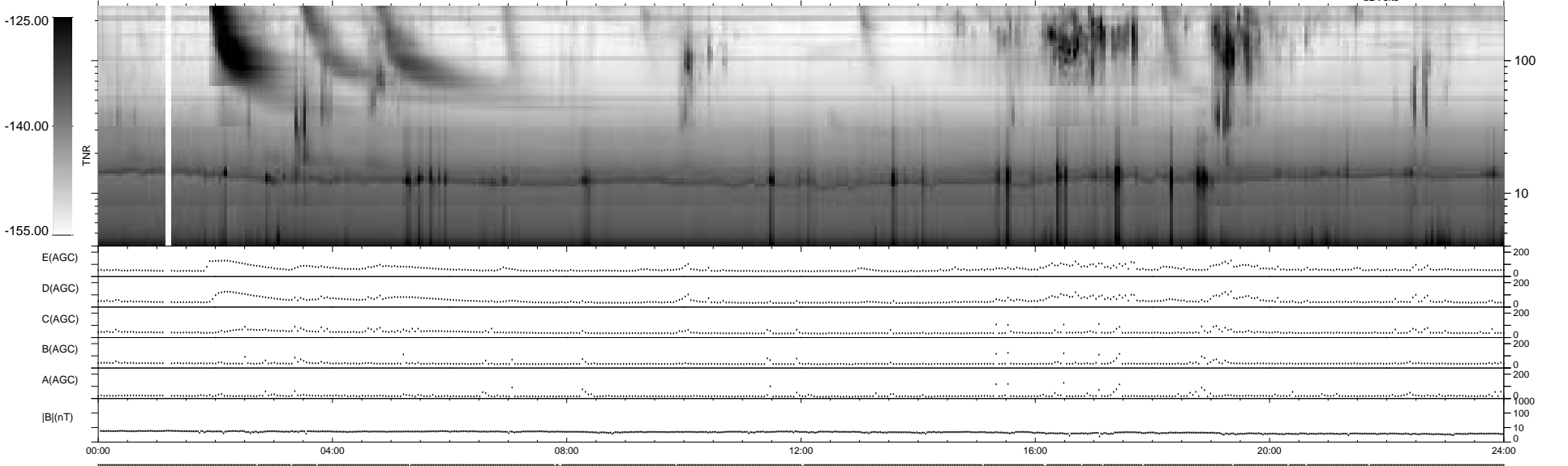
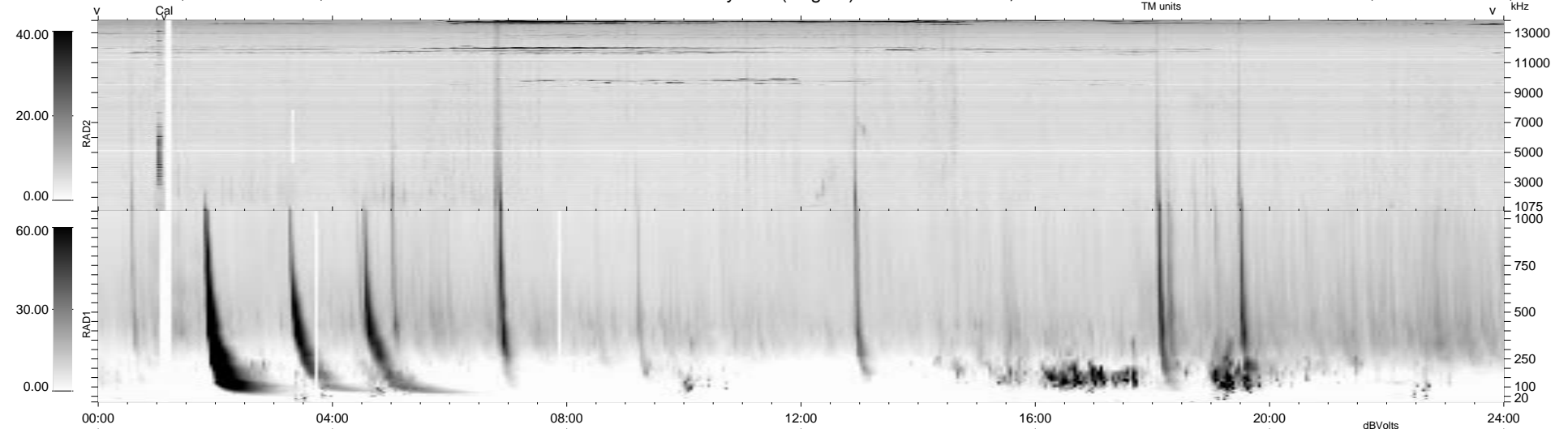


20 bad + 920 good MF/940MF projected (97%) - 0 missing MFs
 Avg interval = 180 secs
 Re = - 138.91 (138.05, -12.65, -8.92 GSE)

1.7d VMS-SunOS LZ version = v01
 DAILY Tue Sep 16, 2008
 Re = 143.28 (142.59, -10.58, -9.17 GSE)

WIND/WAVES Summary Plot (Page 1) for 30-AUG-1998, DOY = 242



```

RAD2
Antenna Ey .....
Mode LIN(1) .....
SUM/SEP SUM .....
Toggle OFF .....

RAD1
Antenna Ex .....
Mode LIS(2,3) .....
SUM/SEP SUM .....
Toggle OFF .....

TNR
Antenna ExEy .....
Mode A-32 .....
Sweep ABCDE .....
  
```