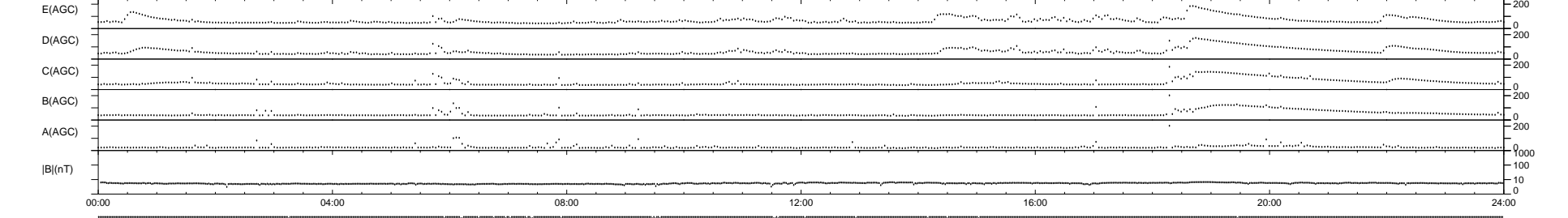
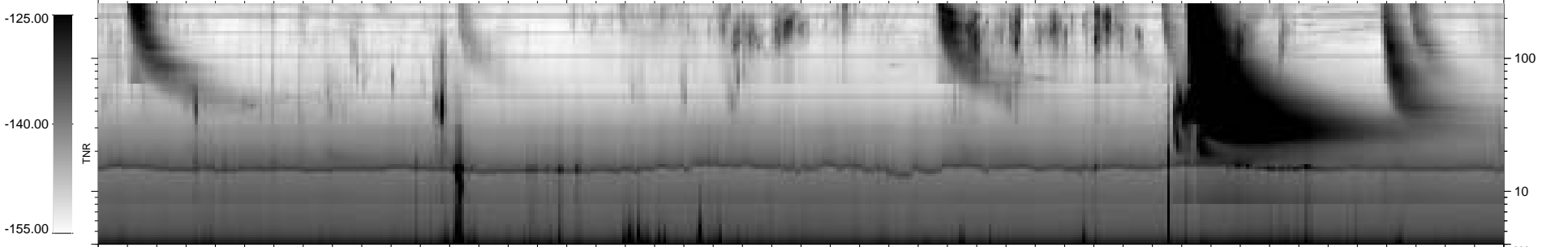
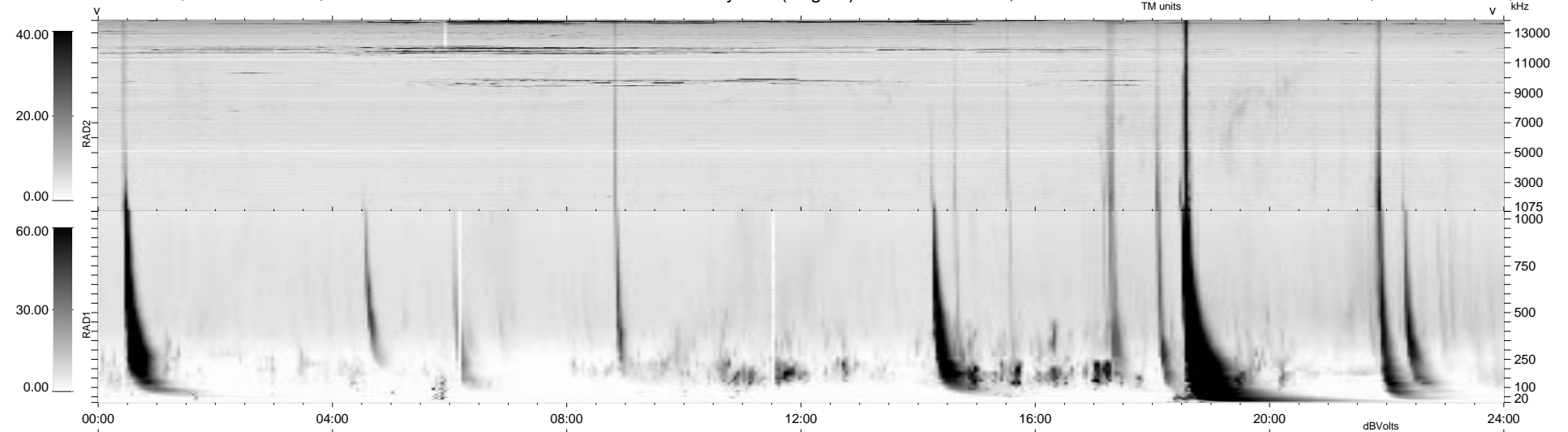


24 bad + 915 good MF/939MF projected (97%) - 0 missing MFs
 Avg interval = 180 secs
 Re = - 134.18 (133.07, -14.87, -8.63 GSE)

1.7d VMS-SunOS LZ version = v01
 DAILY Tue Sep 16, 2008
 Re = 138.88 (138.02, -12.66, -8.92 GSE)

WIND/WAVES Summary Plot (Page 1) for 29-AUG-1998, DOY = 241



RAD2
 Antenna Ey
 Mode LIN(1)
 SUM/SEP SUM
 Toggle OFF
 RAD1
 Antenna Ex
 Mode LIS(2,3)
 SUM/SEP SUM
 Toggle OFF
 TNR
 Antenna ExEy
 Mode A-32
 Sweep ABCDE