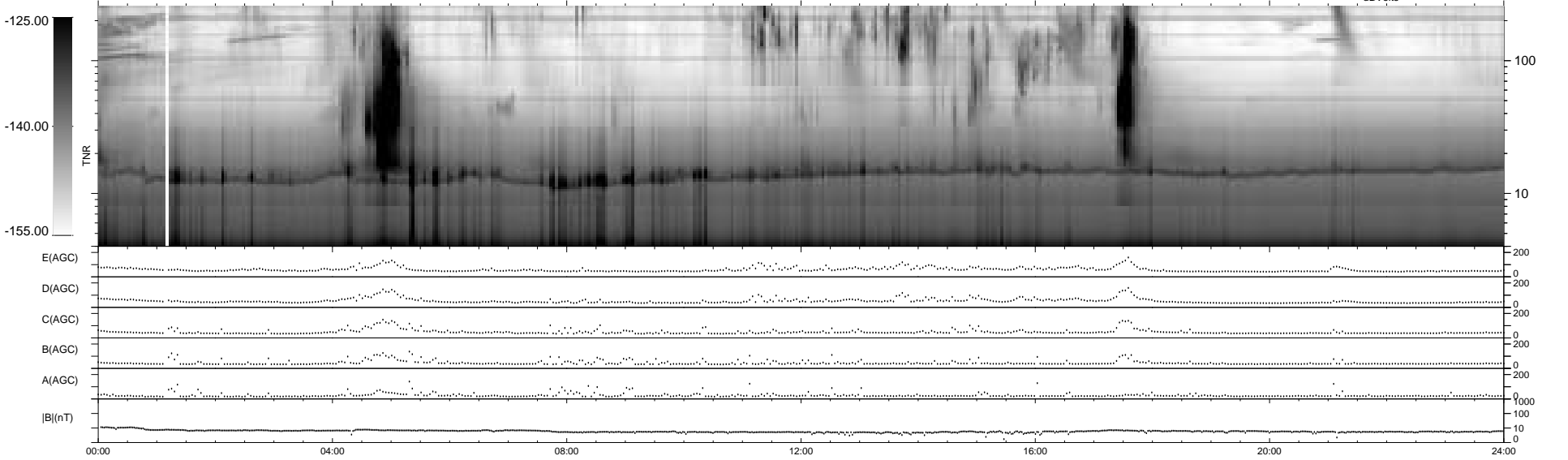
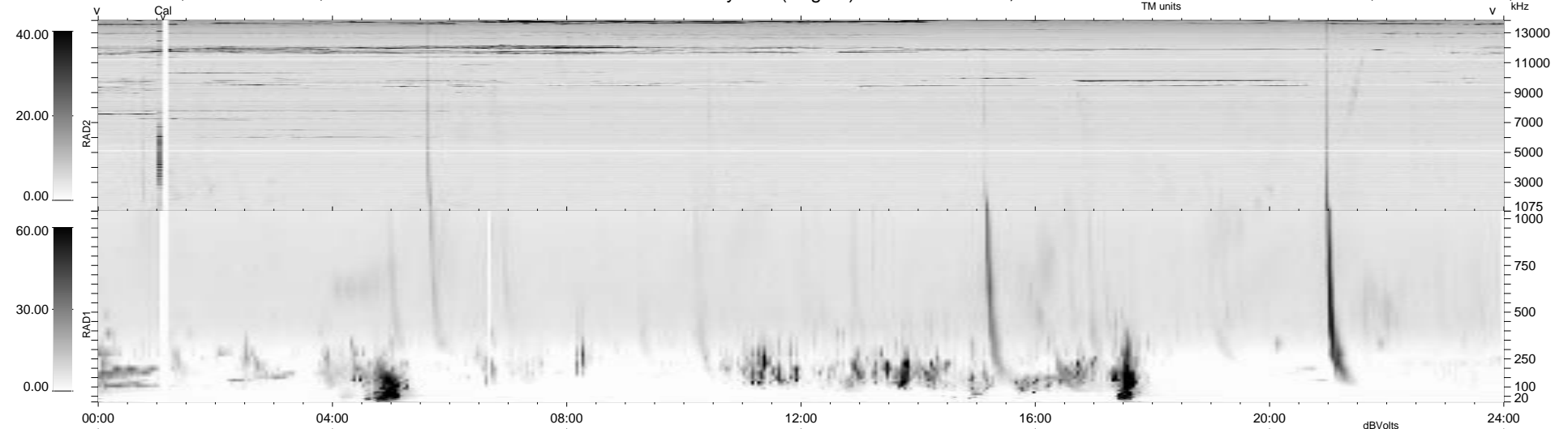


35 bad + 904 good MF/939MF projected (96%) - 0 missing MFs
 Avg interval = 180 secs
 Re = - 129.06 (127.64, -17.23, -8.30 GSE)

1.7d VMS-SunOS LZ version = v01
 DAILY Tue Sep 16, 2008
 Re = 134.14 (133.03, -14.89, -8.63 GSE)

WIND/WAVES Summary Plot (Page 1) for 28-AUG-1998, DOY = 240



E(AGC) 0 200
 D(AGC) 0 200
 C(AGC) 0 200
 B(AGC) 0 200
 A(AGC) 0 200
 |B|(nT) 0 1000
 0 100
 0 10

RAD2
 Antenna Ey
 Mode LIN(1)
 SUM/SEP SUM
 Toggle OFF

RAD1
 Antenna Ex
 Mode LIS(2,3)
 SUM/SEP SUM
 Toggle OFF

TNR
 Antenna ExEy
 Mode A-32
 Sweep ABCDE