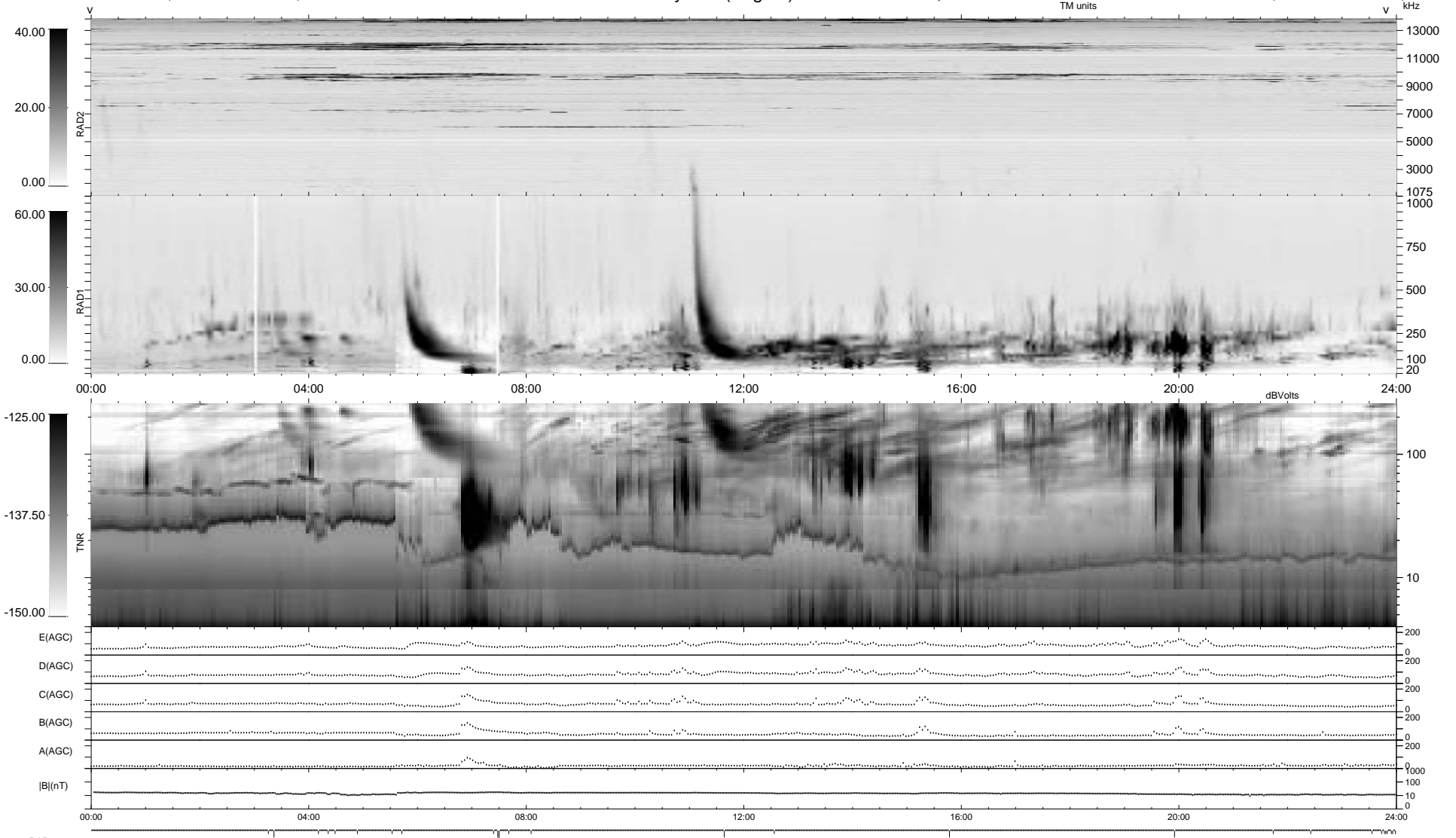


27 bad + 912 good MF/939MF projected (97%) - 0 missing MFs
 Avg interval = 180 secs
 Re = - 123.53 (121.69, -19.71, -7.93 GSE)

1.7d VMS-SunOS LZ version = v01
 DAILY Tue Sep 16, 2008
 Re = 129.02 (127.60, -17.24, -8.30 GSE)

WIND/WAVES Summary Plot (Page 1) for 27-AUG-1998, DOY = 239



RAD2
 Antenna Ey
 Mode LIN(1)
 SUM/SEP SUM
 Toggle OFF
 RAD1
 Antenna Ex
 Mode LIS(2,3)
 SUM/SEP SUM
 Toggle OFF
 TNR
 Antenna ExEy
 Mode A-32
 Sweep ABCDE