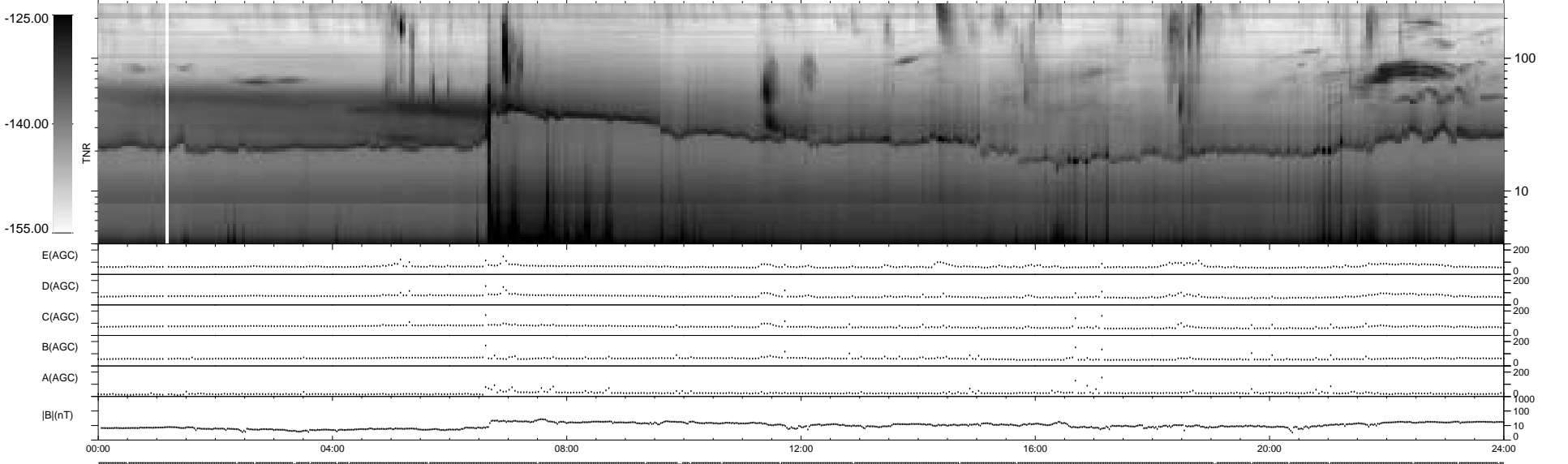
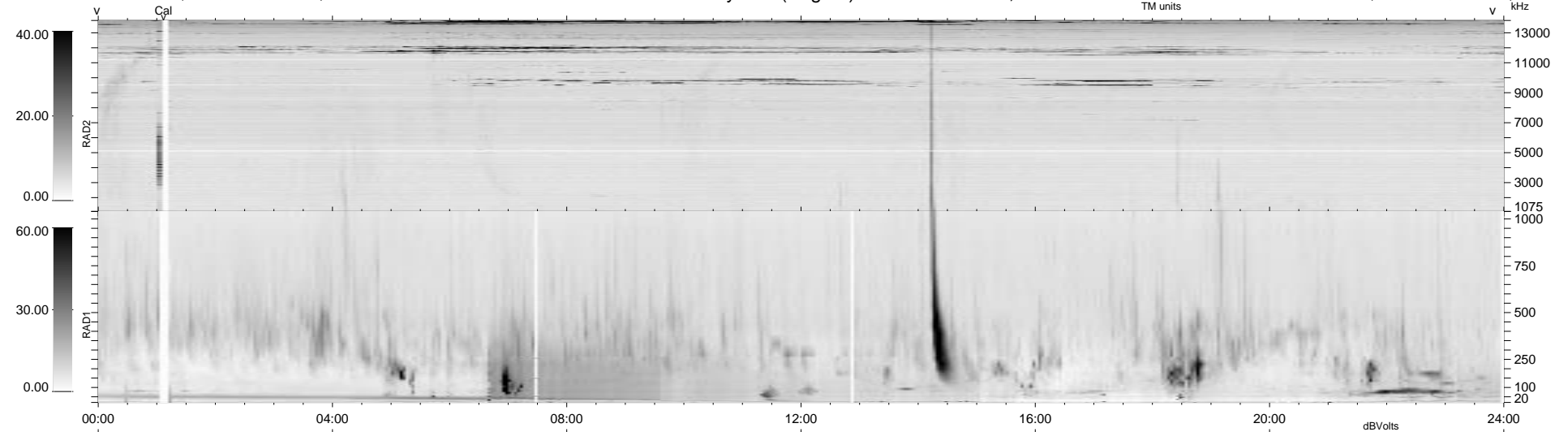


28 bad + 911 good MF/939MF projected (97%) - 0 missing MFs
 Avg interval = 180 secs
 Re = - 117.55 (115.17, -22.30, -7.51 GSE)

1.7d VMS-SunOS LZ version = v01
 DAILY Tue Sep 16, 2008
 Re = 123.49 (121.65, -19.73, -7.93 GSE)

WIND/WAVES Summary Plot (Page 1) for 26-AUG-1998, DOY = 238



RAD2 Antenna Ey
 Mode LIN(1)
 SUM/SEP SUM
 Toggle OFF
 RAD1 Antenna Ex
 Mode LIS(2,3)
 SUM/SEP SUM
 Toggle OFF
 TNR Antenna ExEy
 Mode A-32
 Sweep ABCDE