

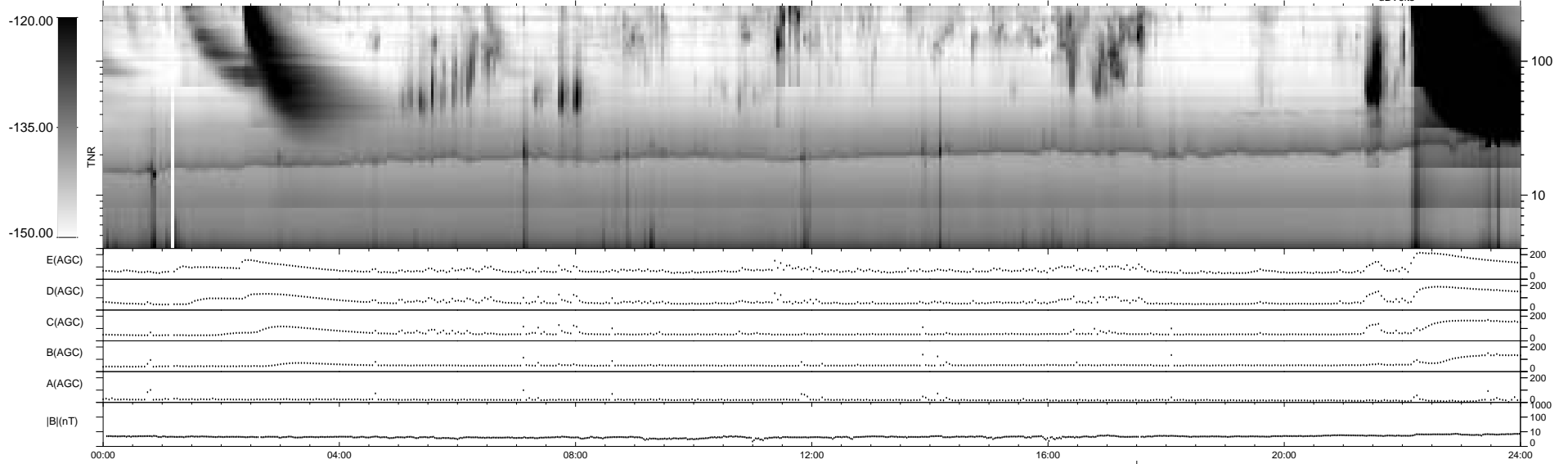
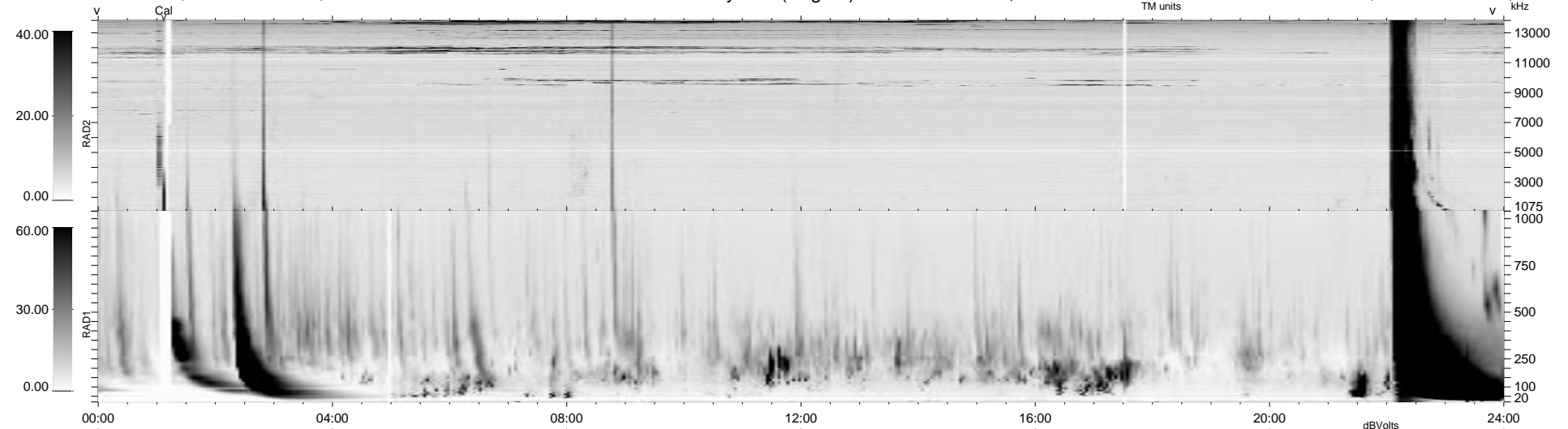
36 bad + 902 good MF/939MF projected (96%) - 1 missing MF
 Avg interval = 180 secs
 Re = -104.00 (100.03, -27.71, -6.49 GSE)

1.7d VMS-SunOS

LZ version = v01

WIND/WAVES Summary Plot (Page 1) for 24-AUG-1998, DOY = 236

DAILY Tue Sep 16, 2008
 Re = 111.01 (107.93, -25.00, -7.03 GSE)



```

RAD2
Antenna Ey .....
Mode LIN(1) .....
SUM/SEP SUM .....
Toggle OFF .....

RAD1
Antenna Ex .....
Mode LIS(2,3) .....
SUM/SEP SUM .....
Toggle OFF .....

TNR
Antenna ExEy .....
Mode A-32 .....
Sweep ABCDE .....
  
```