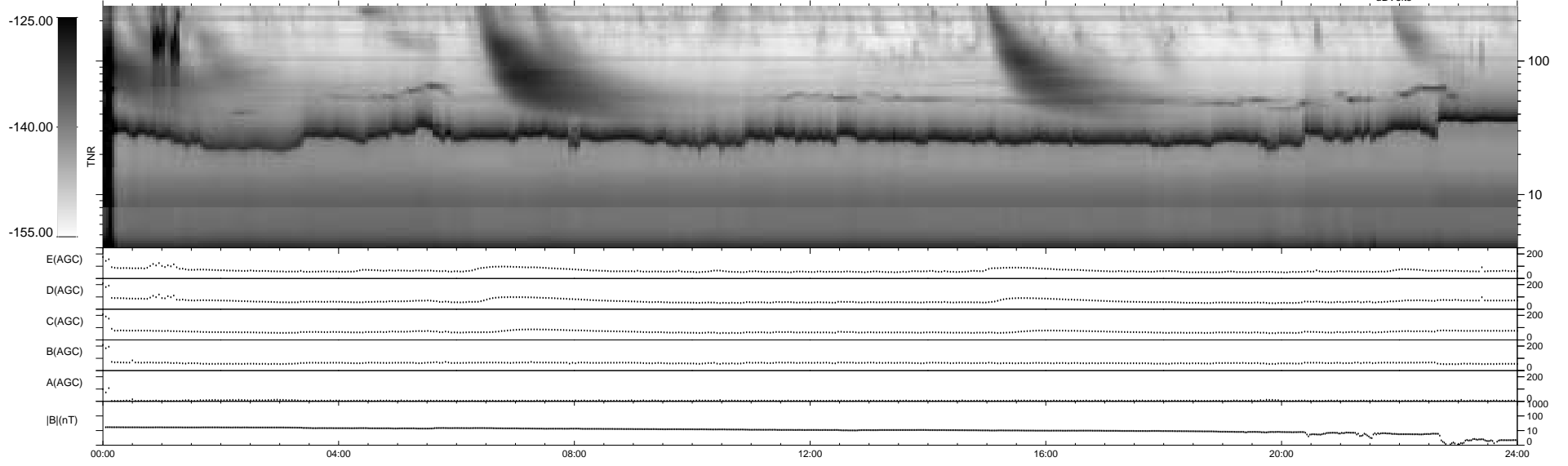
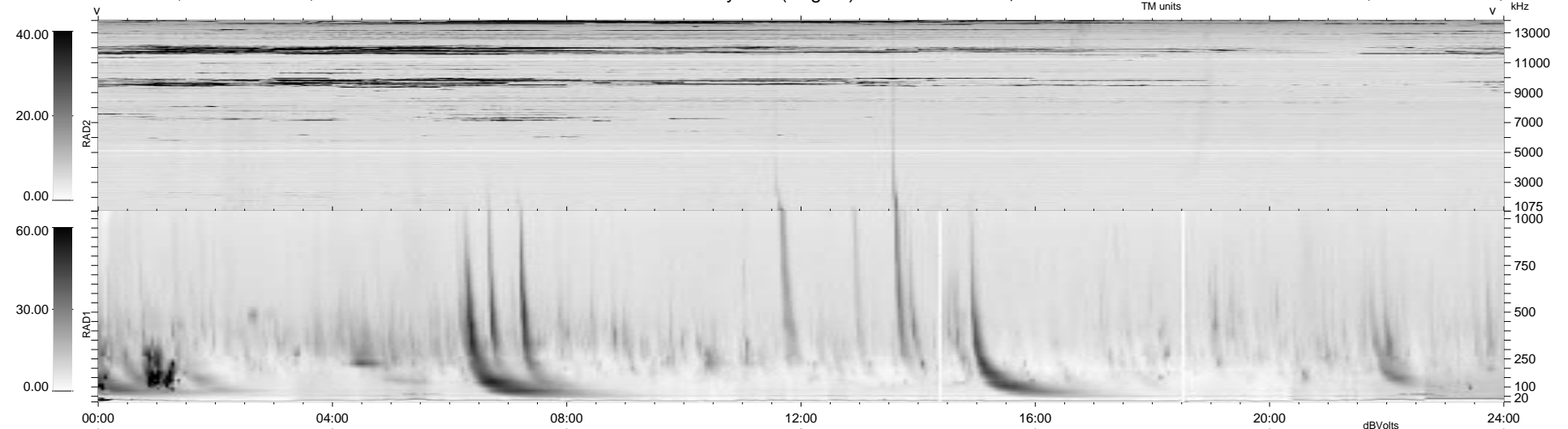


19 bad + 920 good MF/939MF projected (97%) - 0 missing MFs  
 Avg interval = 180 secs  
 Re = 78.53 (70.00, -35.32, -4.39 GSE)

1.7d VMS-SunOS LZ version = v01  
 DAILY Tue Sep 16, 2008  
 Re = 87.79 (81.17, -33.04, -5.19 GSE)

WIND/WAVES Summary Plot (Page 1) for 21-AUG-1998, DOY = 233



RAD2  
 Antenna Ey .....  
 Mode LIN(1) .....  
 SUM/SEP SUM .....  
 Toggle OFF .....  
 RAD1  
 Antenna Ex .....  
 Mode LIS(2,3) .....  
 SUM/SEP SUM .....  
 Toggle OFF .....  
 TNR  
 Antenna ExEy .....  
 Mode A-32 .....  
 Sweep ABCDE .....