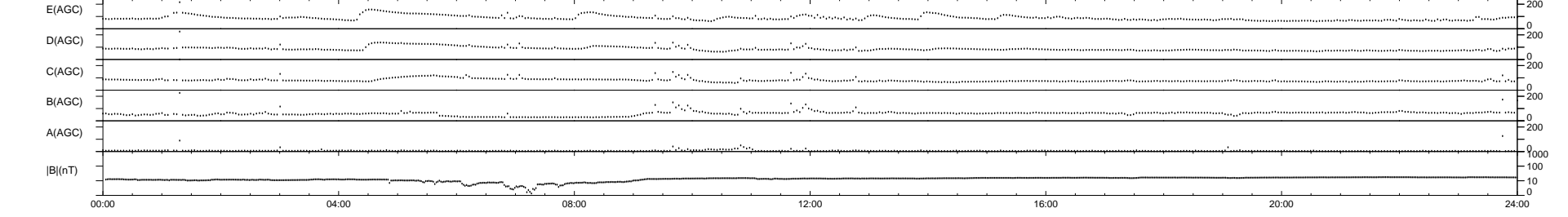
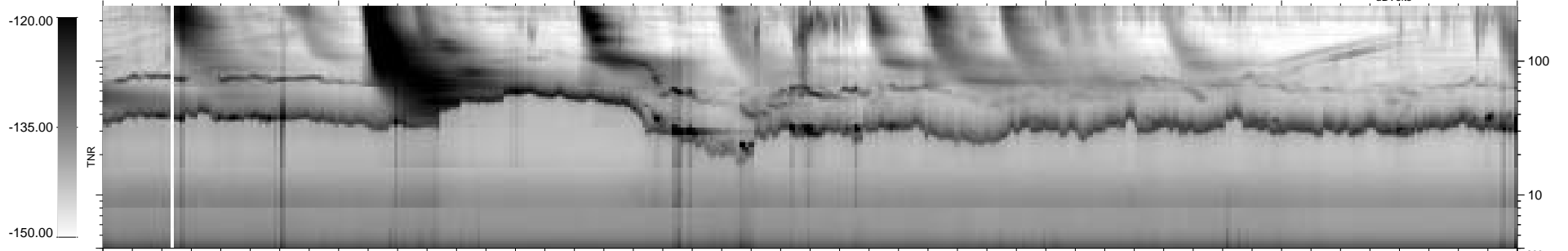
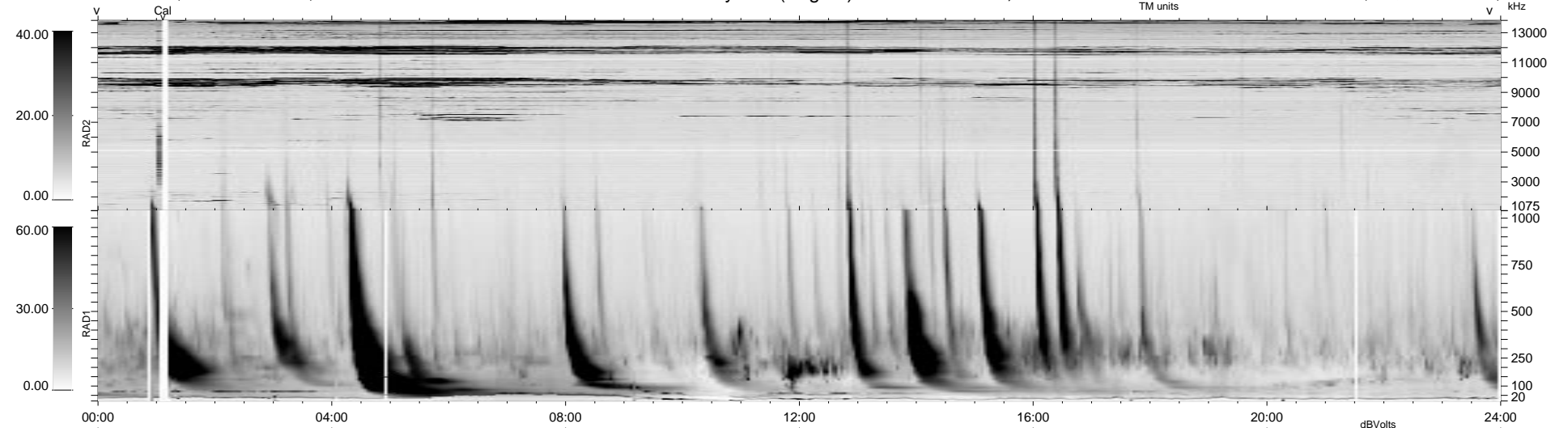


13 bad + 926 good MF/939MF projected (98%) - 0 missing MFs
 Avg interval = 180 secs
 Re = 68.05 (57.07, -36.90, -3.46 GSE)

1.7d VMS-SunOS LZ version = v01
 DAILY Tue Sep 16, 2008
 Re = 78.46 (69.92, -35.33, -4.39 GSE)

WIND/WAVES Summary Plot (Page 1) for 20-AUG-1998, DOY = 232



RAD2
 Antenna Ey
 Mode LIN(1)
 SUM/SEP SUM
 Toggle OFF
 RAD1
 Antenna Ex
 Mode LIS(2,3)
 SUM/SEP SUM
 Toggle OFF
 TNR
 Antenna ExEy
 Mode A-32
 Sweep ABCDE