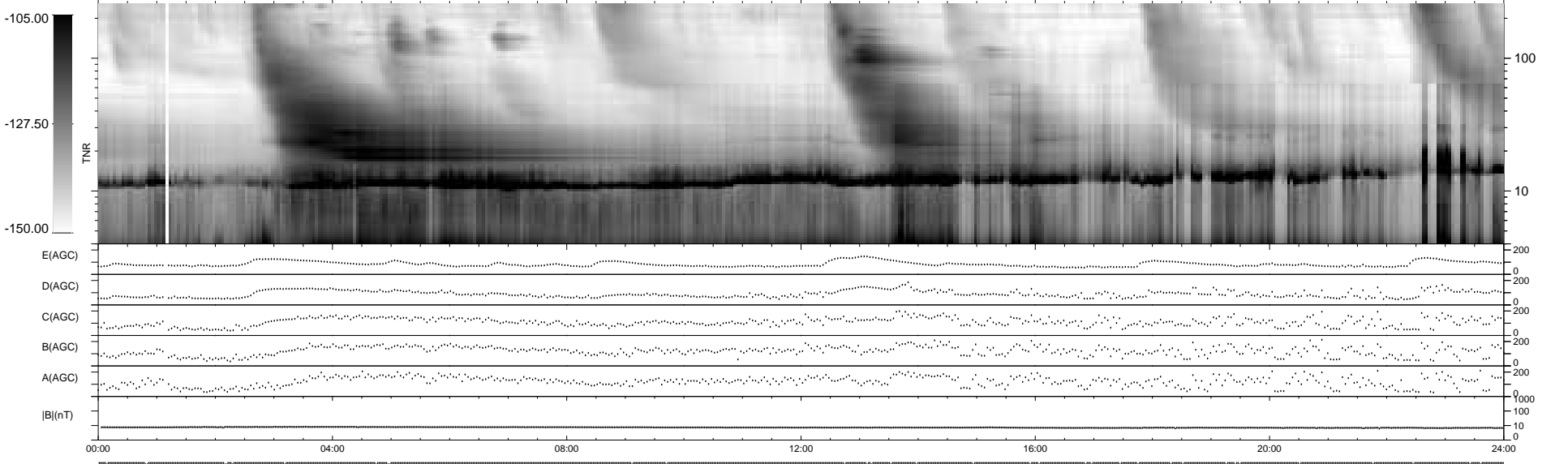
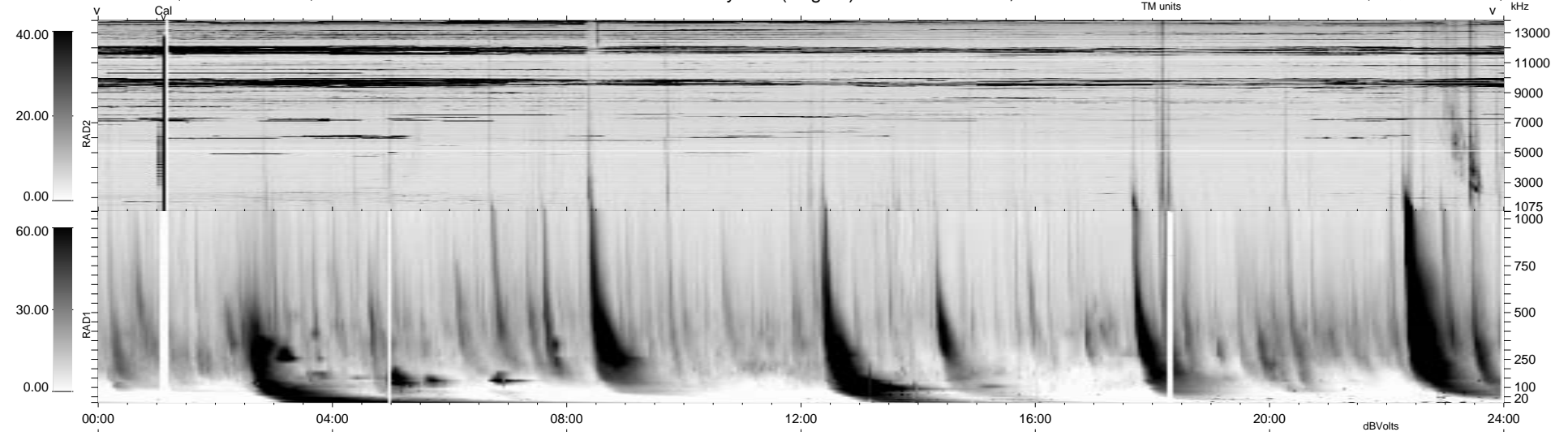


34 bad + 905 good MF/939MF projected (96%) - 0 missing MFs
 Avg interval = 180 secs
 Re = 42.43 (27.07, -32.62, -1.76 GSE)

1.7d VMS-SunOS LZ version = v01
 DAILY Tue Sep 16, 2008
 Re = 55.69 (42.26, -36.20, -2.43 GSE)

WIND/WAVES Summary Plot (Page 1) for 18-AUG-1998, DOY = 230



RAD2
 Antenna Ey
 Mode LIN(1)
 SUM/SEP SUM
 Toggle OFF
 RAD1
 Antenna Ex
 Mode LIS(2,3)
 SUM/SEP SUM
 Toggle OFF
 TNR
 Antenna ExEy
 Mode A-32
 Sweep ABCDE