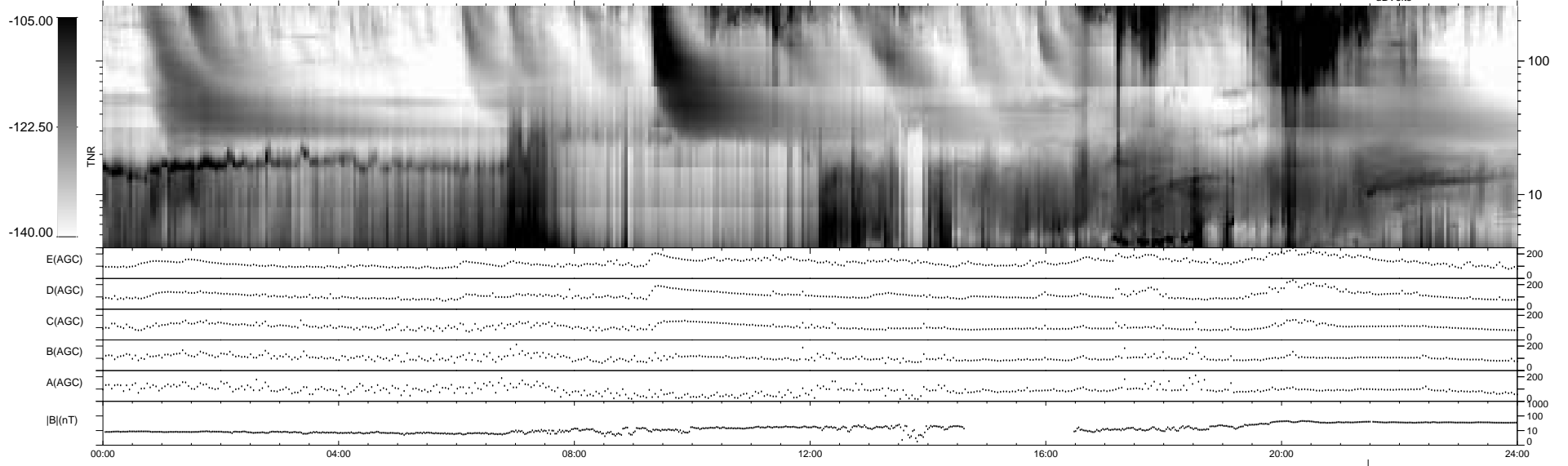
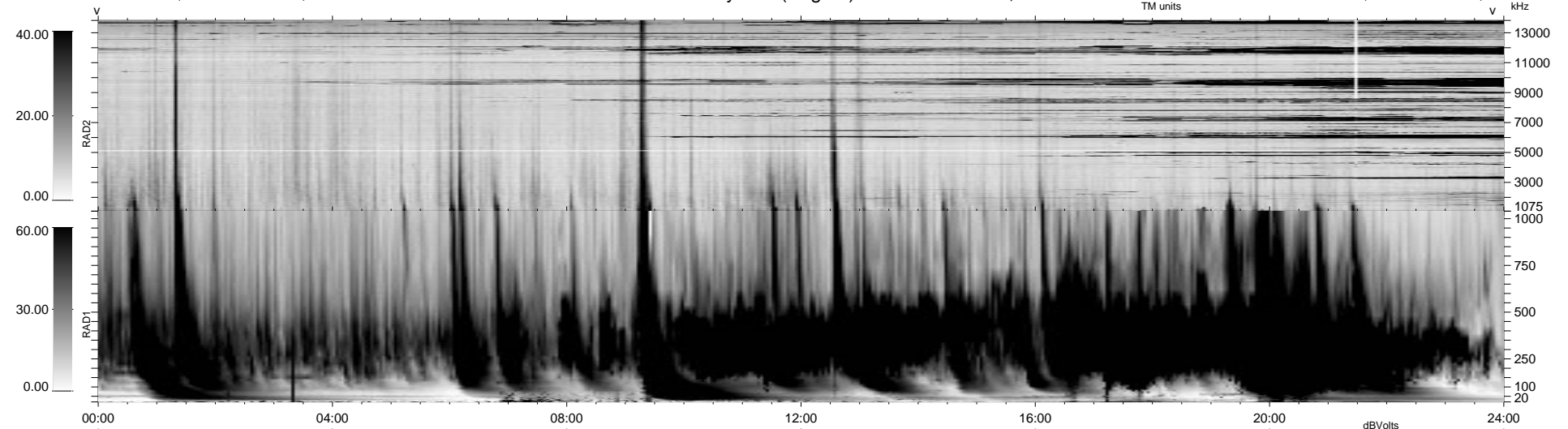


16 bad + 923 good MF/940MF projected (98%) - 1 missing MF
 Avg interval = 180 secs
 Re = 28.73 (16.74, 23.35, 0.06 GSE)

1.7d VMS-SunOS LZ version = v01

WIND/WAVES Summary Plot (Page 1) for 15-AUG-1998, DOY = 227

DAILY Tue Sep 16, 2008
 Re = 9.68 (-8.33, 4.92, 0.40 GSE)



RAD2
 Antenna Ey
 Mode LIN(1)
 SUM/SEP SUM
 Toggle OFF
 RAD1
 Antenna Ex
 Mode LIS(2,3)
 SUM/SEP SUM
 Toggle OFF
 TNR
 Antenna ExEy
 Mode A-32
 Sweep ABCDE