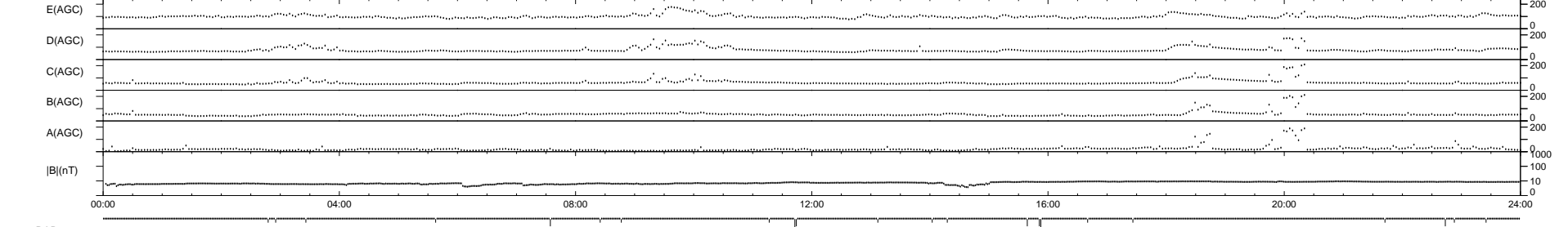
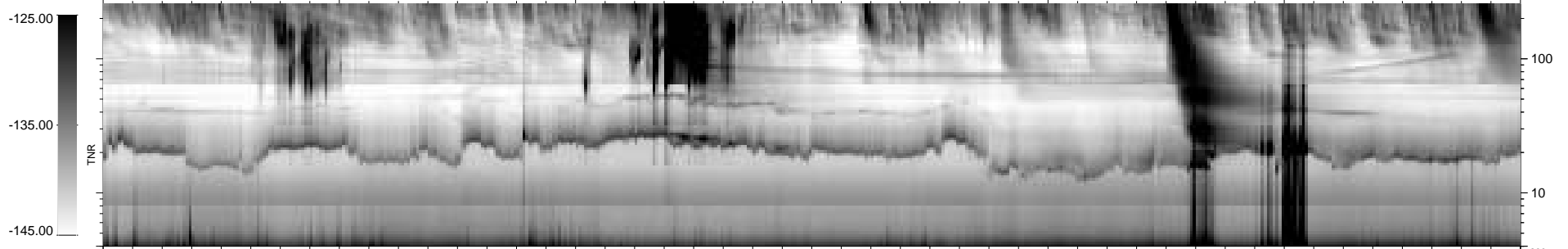
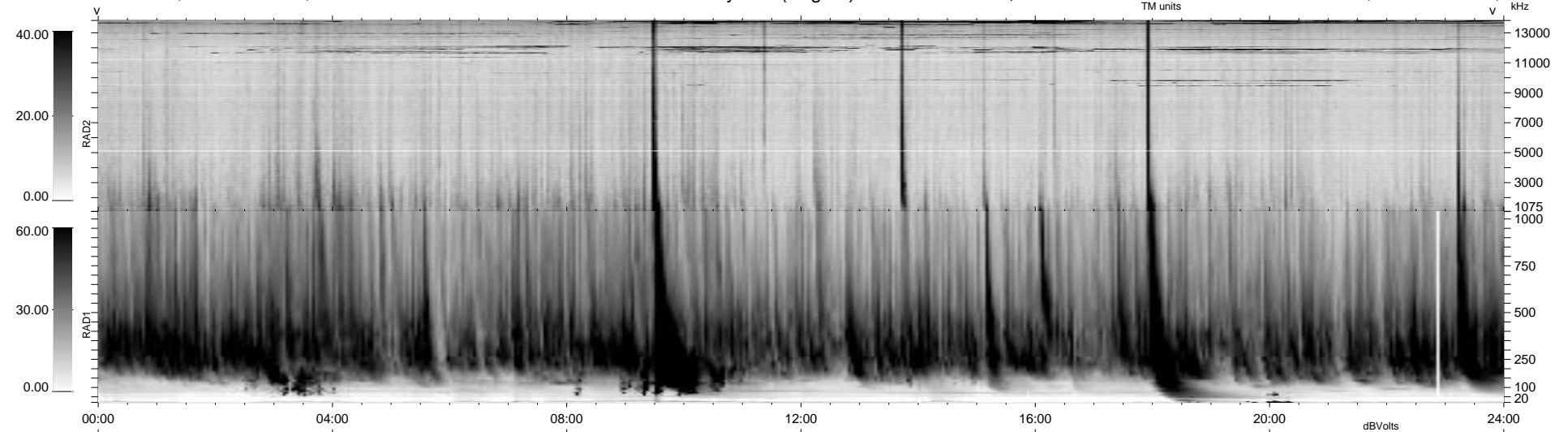


22 bad + 917 good MF/939MF projected (97%) - 0 missing MFs
 Avg interval = 180 secs
 Re = - 56.71 (50.45, 25.89, -1.03 GSE)

1.7d VMS-SunOS LZ version = v01
 DAILY Tue Sep 16, 2008
 Re = 44.65 (36.12, 26.23, -0.52 GSE)

WIND/WAVES Summary Plot (Page 1) for 13-AUG-1998, DOY = 225



RAD2
 Antenna Ey
 Mode LIN(1)
 SUM/SEP SUM
 Toggle OFF

RAD1
 Antenna Ex
 Mode LIS(2,3)
 SUM/SEP SUM
 Toggle OFF

TNR
 Antenna ExEy
 Mode A-32
 Sweep ABCDE