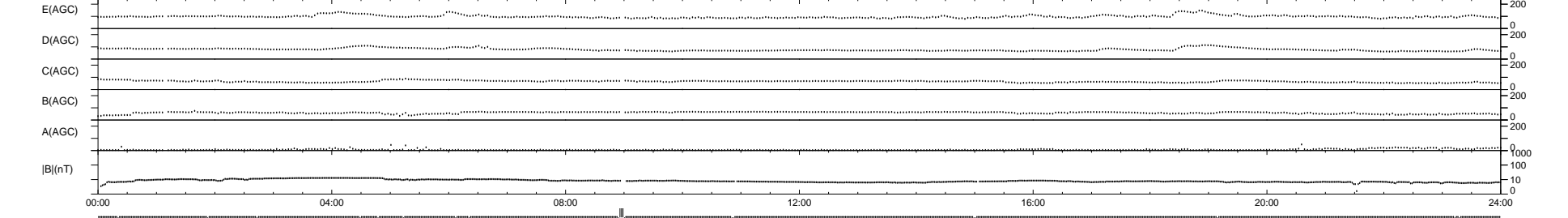
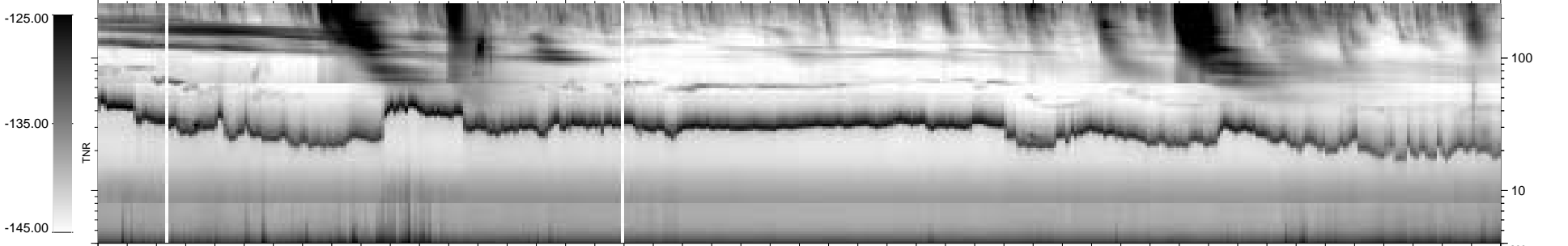
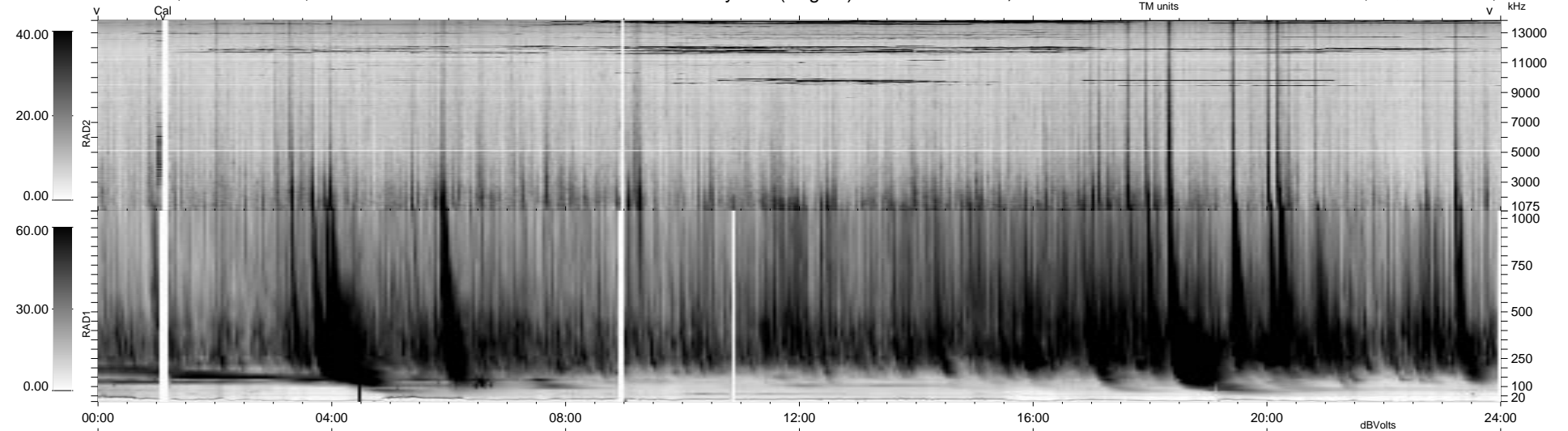


17 bad + 919 good MF/939MF projected (97%) - 3 missing MFs
 Avg interval = 180 secs
 Re = 66.36 (61.74, 24.30, -1.48 GSE)

1.7d VMS-SunOS LZ version = v01
 DAILY Tue Sep 16, 2008
 Re = 56.79 (50.53, 25.88, -1.03 GSE)

WIND/WAVES Summary Plot (Page 1) for 12-AUG-1998, DOY = 224



```

RAD2
Antenna Ey .....
Mode LIN(1) .....
SUM/SEP SUM .....
Toggle OFF .....

RAD1
Antenna Ex .....
Mode LIS(2,3) .....
SUM/SEP SUM .....
Toggle OFF .....

TNR
Antenna ExEy .....
Mode A-32 .....
Sweep ABCDE .....
  
```