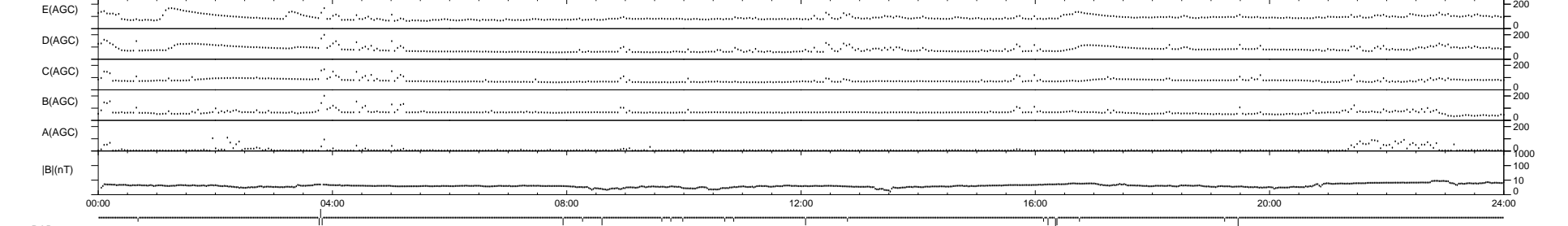
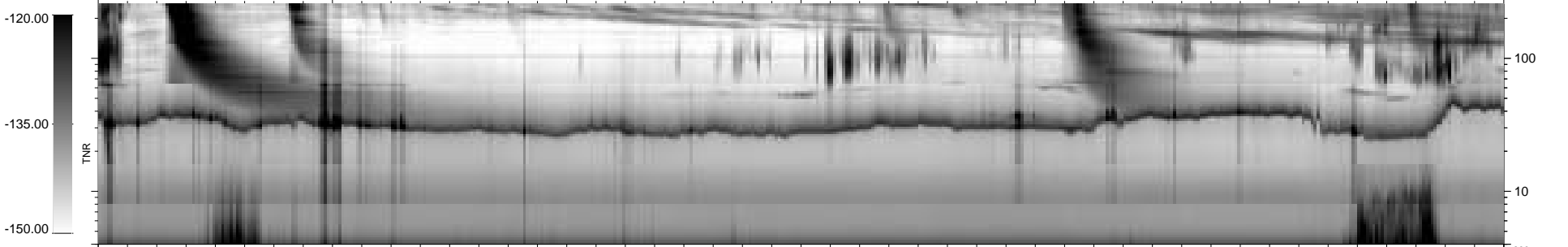
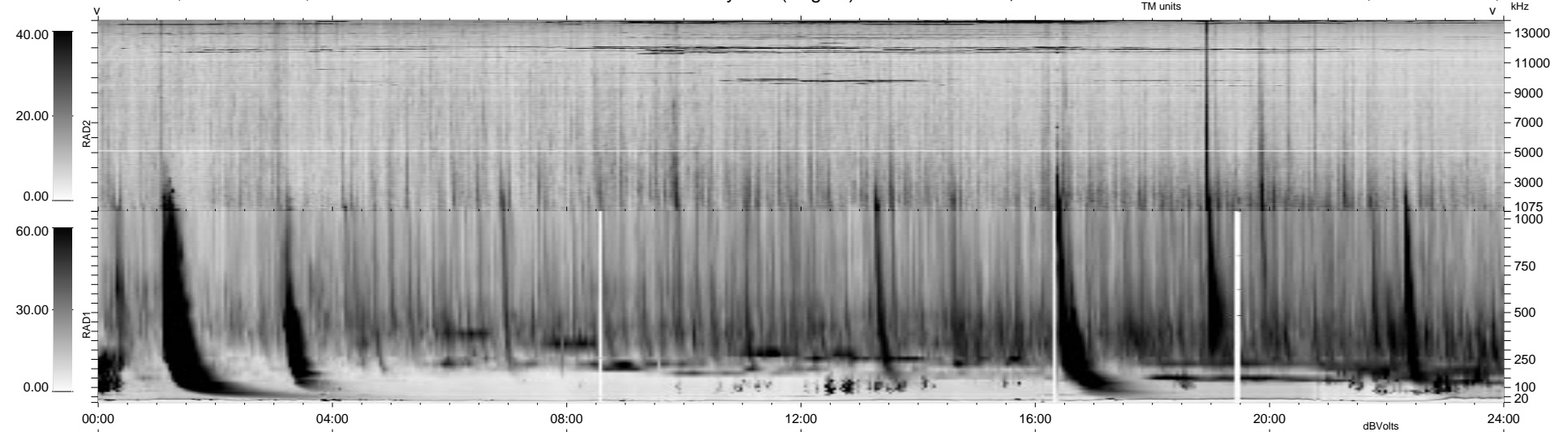


20 bad + 918 good MF/939MF projected (97%) - 1 missing MF  
 Avg interval = 180 secs  
 Re = 74.11 (70.72, 22.09, -1.86 GSE)

1.7d VMS-SunOS LZ version = v01

WIND/WAVES Summary Plot (Page 1) for 11-AUG-1998, DOY = 223

DAILY Tue Sep 16, 2008  
 Re = 66.42 (61.81, 24.29, -1.48 GSE)



RAD2  
 Antenna Ey  
 Mode LIN(1)  
 SUM/SEP SUM  
 Toggle OFF

RAD1  
 Antenna Ex  
 Mode LIS(2,3)  
 SUM/SEP SUM  
 Toggle OFF

TNR  
 Antenna ExEy  
 Mode A-32  
 Sweep ABCDE