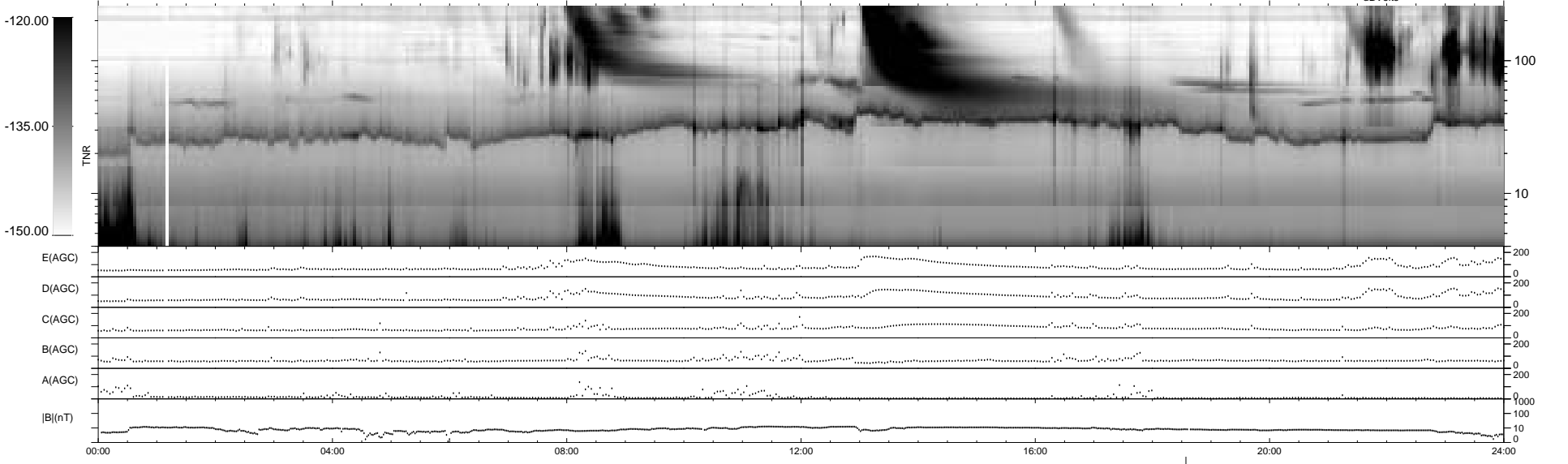
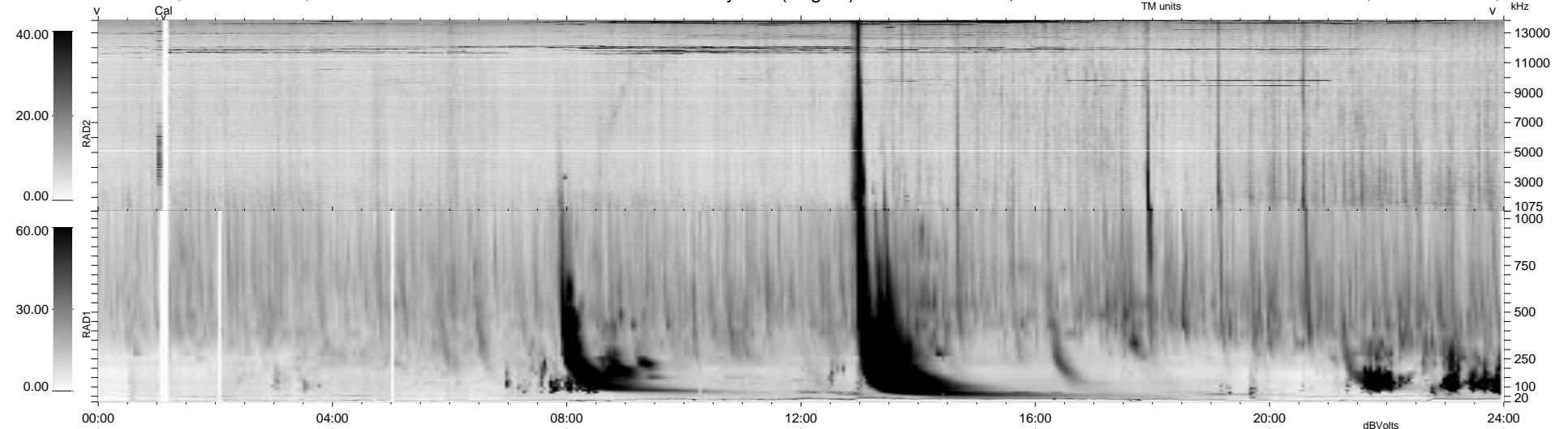


13 bad + 925 good MF/939MF projected (98%) - 1 missing MF
 Avg interval = 180 secs
 Re = 80.30 (77.85, 19.54, -2.20 GSE)

1.7d VMS-SunOS LZ version = v01
 DAILY Tue Sep 16, 2008
 Re = 74.16 (70.77, 22.08, -1.87 GSE)

WIND/WAVES Summary Plot (Page 1) for 10-AUG-1998, DOY = 222



RAD2
 Antenna Ey
 Mode LIN(1)
 SUM/SEP SUM
 Toggle OFF

RAD1
 Antenna Ex
 Mode LIS(2,3)
 SUM/SEP SUM
 Toggle OFF

TNR
 Antenna ExEy
 Mode A-32
 Sweep ABCDE