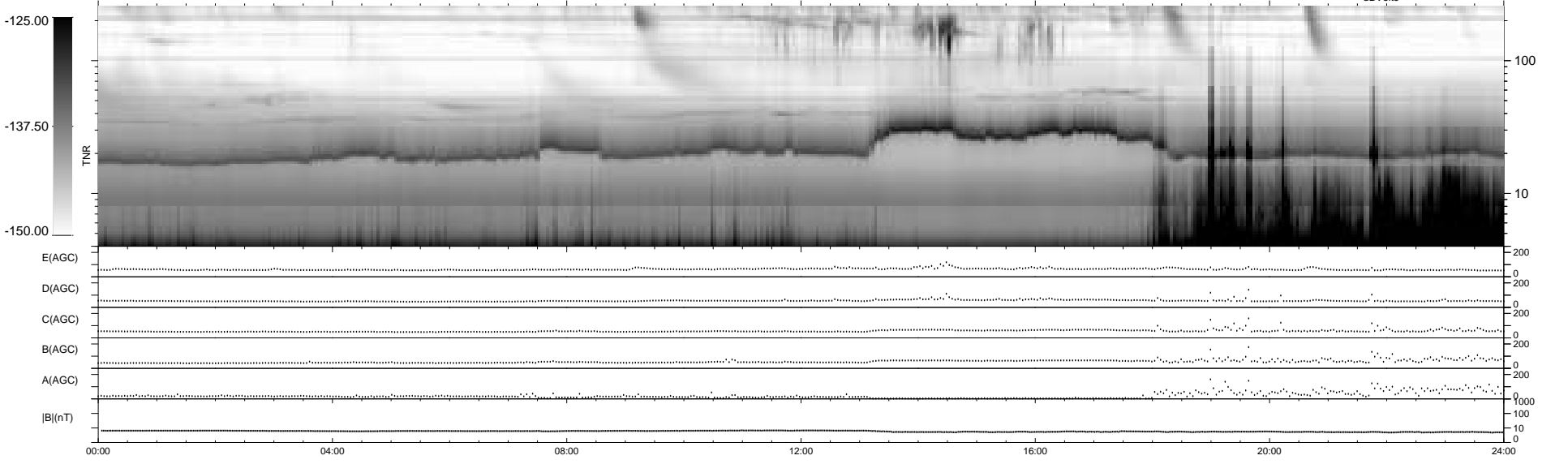
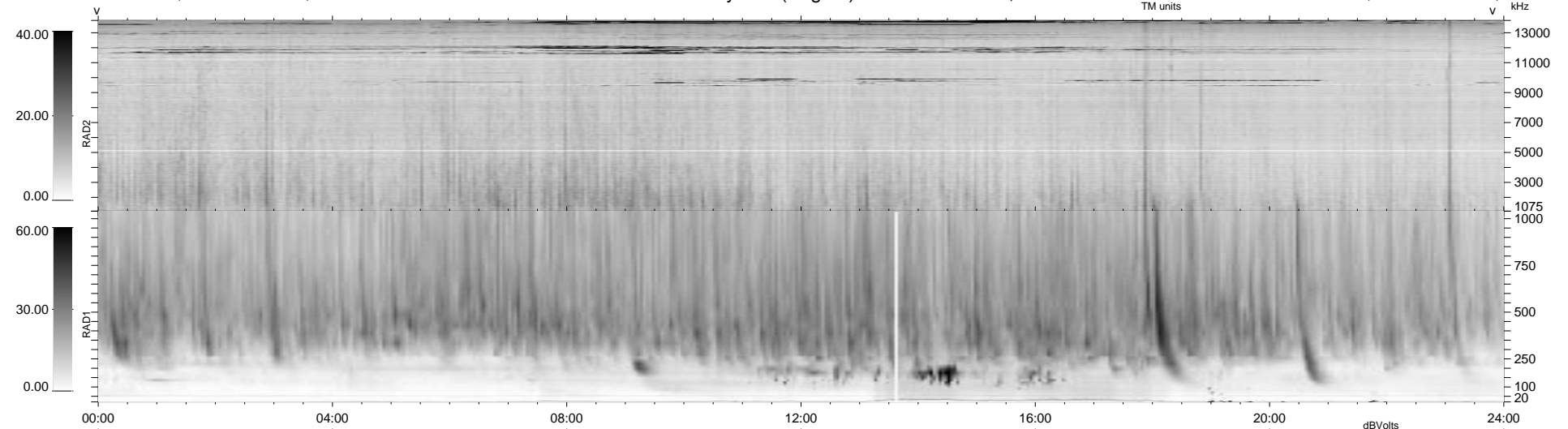


9 bad + 930 good MF/939MF projected (99%) - 0 missing MFs
 Avg interval = 180 secs
 Re = - 85.16 (83.45, 16.78, -2.48 GSE)

1.7d VMS-SunOS LZ version = v01
 DAILY Tue Sep 16, 2008
 Re = 80.34 (77.90, 19.53, -2.20 GSE)

WIND/WAVES Summary Plot (Page 1) for 09-AUG-1998, DOY = 221



```

RAD2
Antenna Ey .....
Mode LIN(1) .....
SUM/SEP SUM .....
Toggle OFF .....

RAD1
Antenna Ex .....
Mode LIS(2,3) .....
SUM/SEP SUM .....
Toggle OFF .....

TNR
Antenna ExEy .....
Mode A-32 .....
Sweep ABCDE .....
  
```