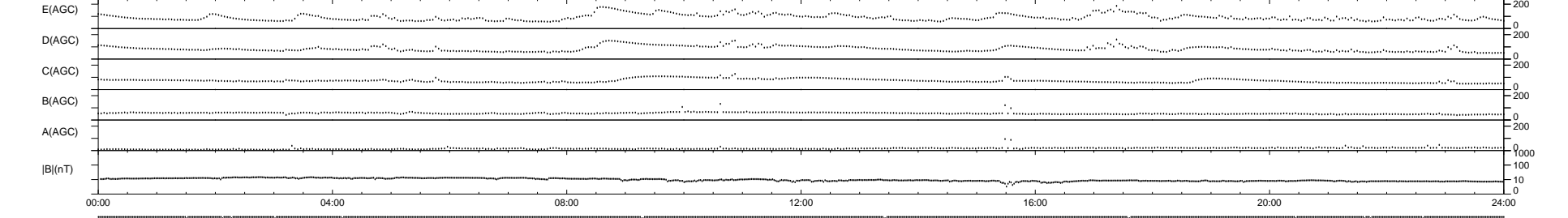
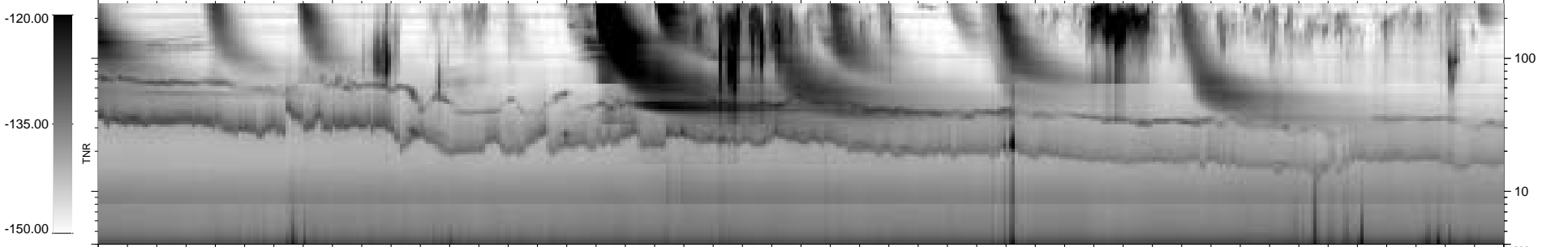
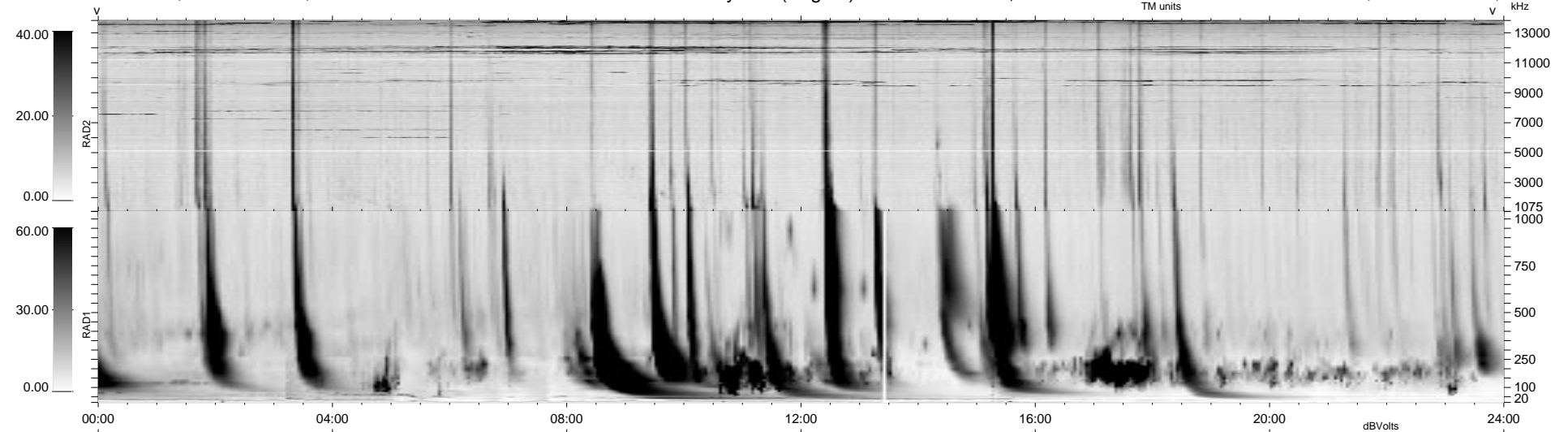


15 bad + 925 good MF/940MF projected (98%) - 0 missing MFs  
 Avg interval = 180 secs  
 Re = - 91.39 (90.69, 10.87, -2.90 GSE)

1.7d VMS-SunOS LZ version = v01  
 DAILY Tue Sep 16, 2008  
 Re = 88.84 (87.71, 13.86, -2.71 GSE)

WIND/WAVES Summary Plot (Page 1) for 07-AUG-1998, DOY = 219



RAD2  
 Antenna Ey .....  
 Mode LIN(1) .....  
 SUM/SEP SUM .....  
 Toggle OFF .....  
 RAD1  
 Antenna Ex .....  
 Mode LIS(2,3) .....  
 SUM/SEP SUM .....  
 Toggle OFF .....  
 TNR  
 Antenna ExEy .....  
 Mode A-32 .....  
 Sweep ABCDE .....