

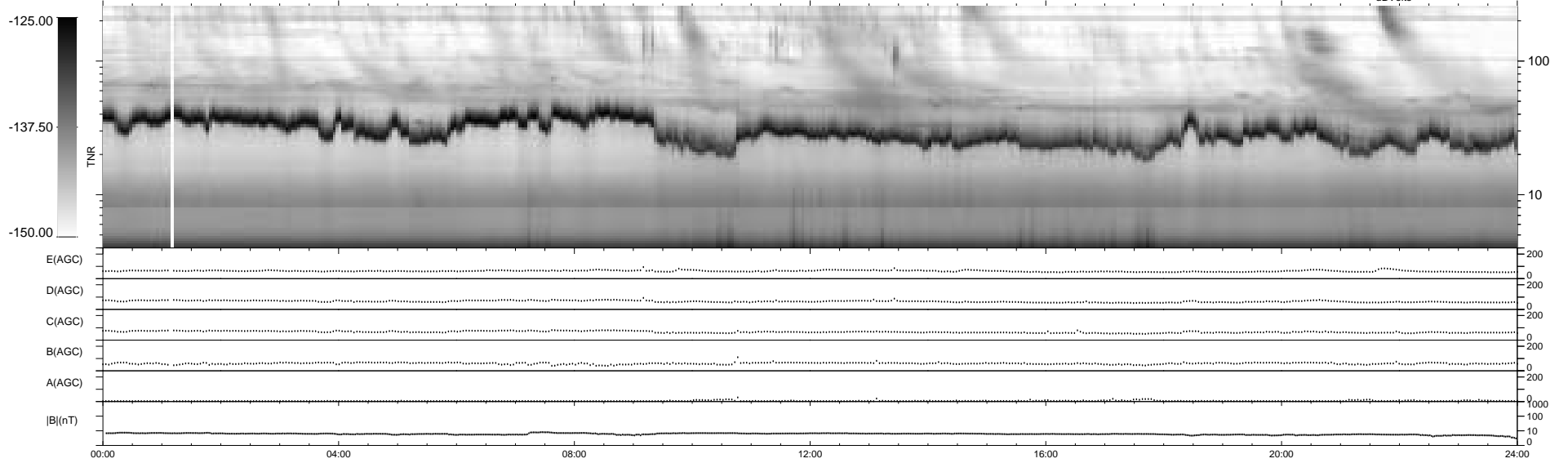
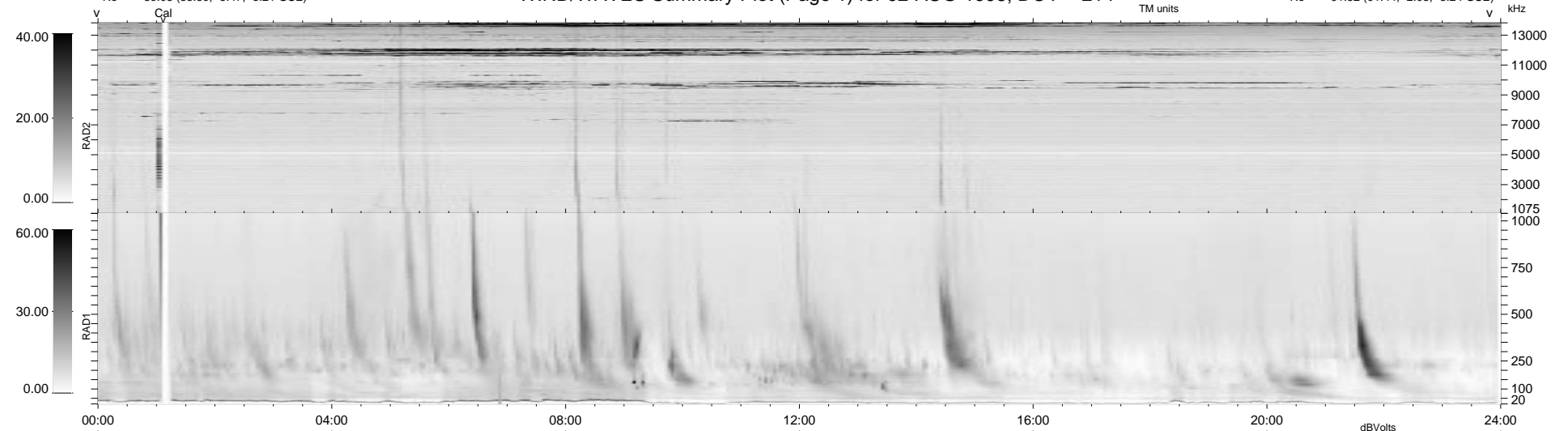
17 bad + 922 good MF/939MF projected (98%) - 0 missing MFs
 Avg interval = 180 secs
 Re = 89.03 (88.80, -5.47, -3.21 GSE)

1.7d VMS-SunOS LZ version = v01

DAILY Tue Sep 16, 2008

Re = 91.52 (91.44, -2.08, -3.24 GSE)

WIND/WAVES Summary Plot (Page 1) for 02-AUG-1998, DOY = 214



```

RAD2
Antenna Ey .....
Mode LIN(1) .....
SUM/SEP SUM .....
Toggle OFF .....

RAD1
Antenna Ex .....
Mode LIS(2,3) .....
SUM/SEP SUM .....
Toggle OFF .....

TNR
Antenna ExEy .....
Mode A-32 .....
Sweep ABCDE .....
  
```