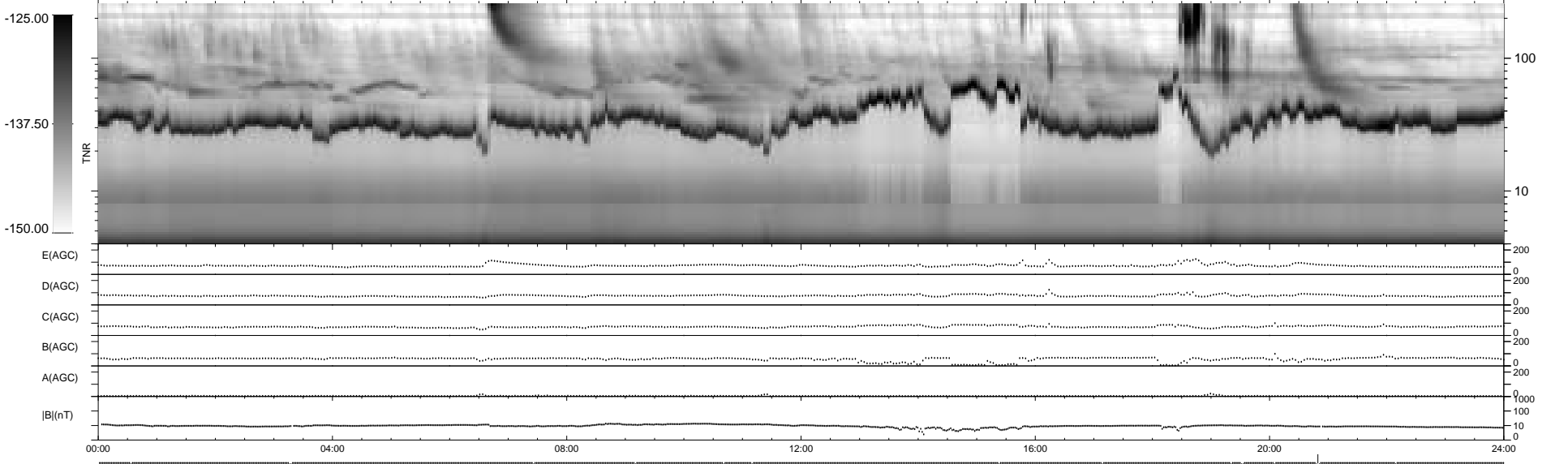
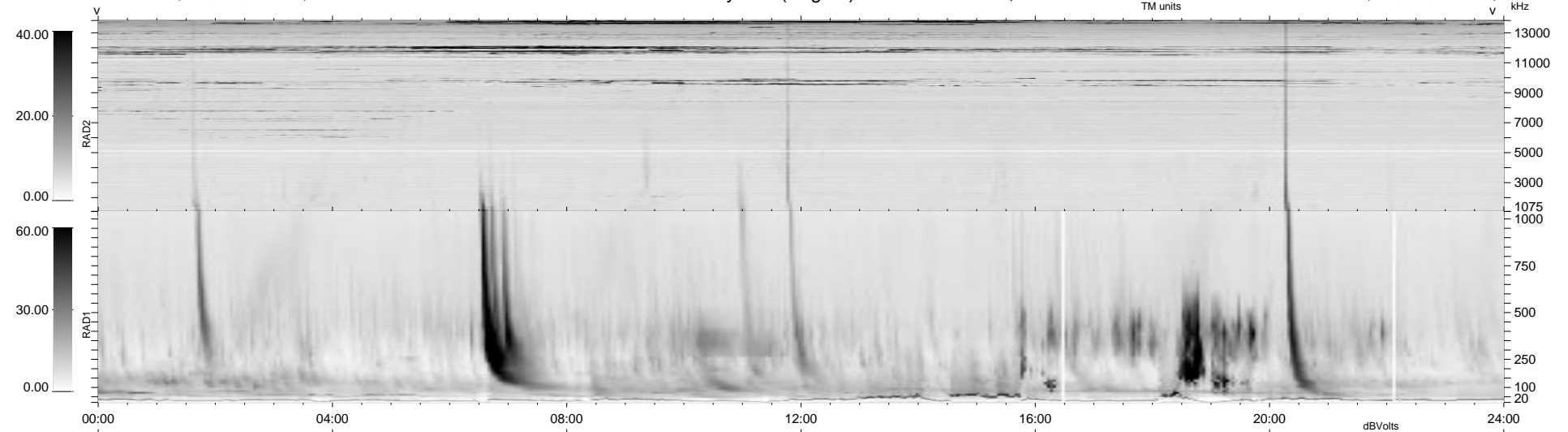


16 bad + 922 good MF/939MF projected (98%) - 1 missing MF  
 Avg interval = 180 secs  
 Re = 85.42 (84.89, -8.93, -3.13 GSE)

1.7d VMS-SunOS LZ version = v01

WIND/WAVES Summary Plot (Page 1) for 01-AUG-1998, DOY = 213

DAILY Tue Sep 16, 2008  
 Re = 89.00 (88.78, -5.49, -3.21 GSE)



RAD2  
 Antenna Ey  
 Mode LIN(1)  
 SUM/SEP SUM  
 Toggle OFF

RAD1  
 Antenna Ex  
 Mode LIS(2,3)  
 SUM/SEP SUM  
 Toggle OFF

TNR  
 Antenna ExEy  
 Mode A-32  
 Sweep ABCDE