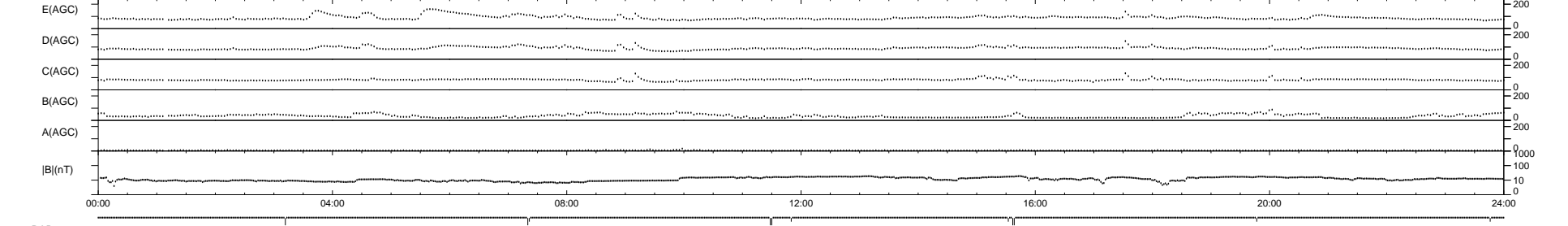
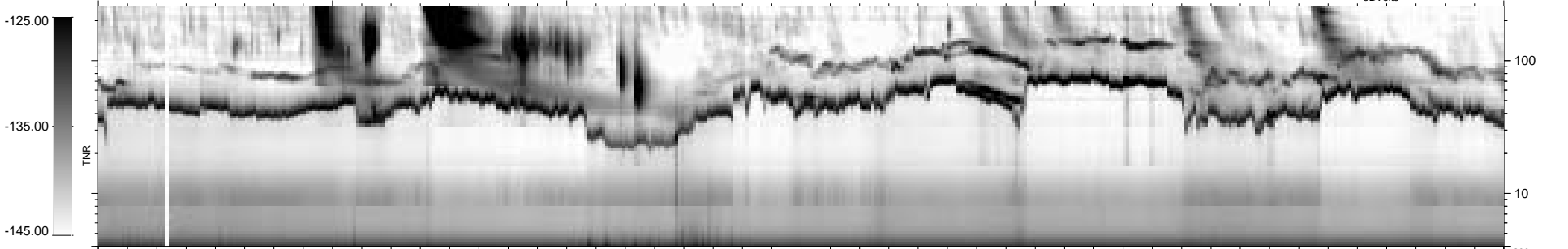
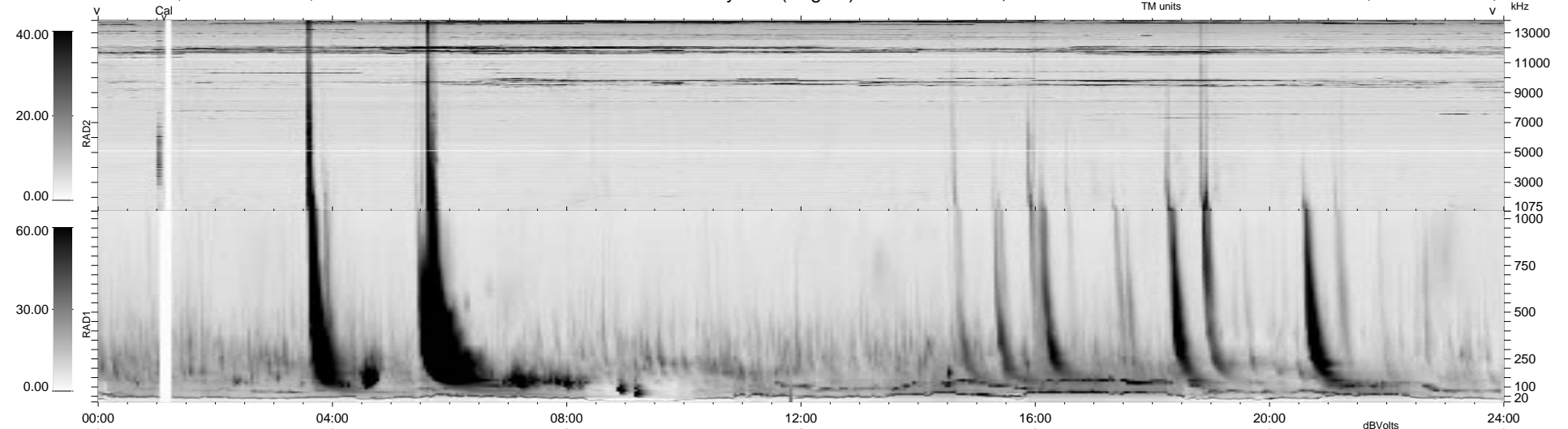


11 bad + 929 good MF/940MF projected (98%) - 0 missing MFs
 Avg interval = 180 secs
 Re = 80.62 (79.60, -12.41, -3.00 GSE)

1.7d VMS-SunOS LZ version = v01

WIND/WAVES Summary Plot (Page 1) for 31-JUL-1998, DOY = 212

DAILY Tue Sep 16, 2008
 Re = 85.39 (84.86, -8.96, -3.13 GSE)



RAD2
 Antenna Ey
 Mode LIN(1)
 SUM/SEP SUM
 Toggle OFF
 RAD1
 Antenna Ex
 Mode LIS(2,3)
 SUM/SEP SUM
 Toggle OFF
 TNR
 Antenna ExEy
 Mode A-32
 Sweep ABCDE