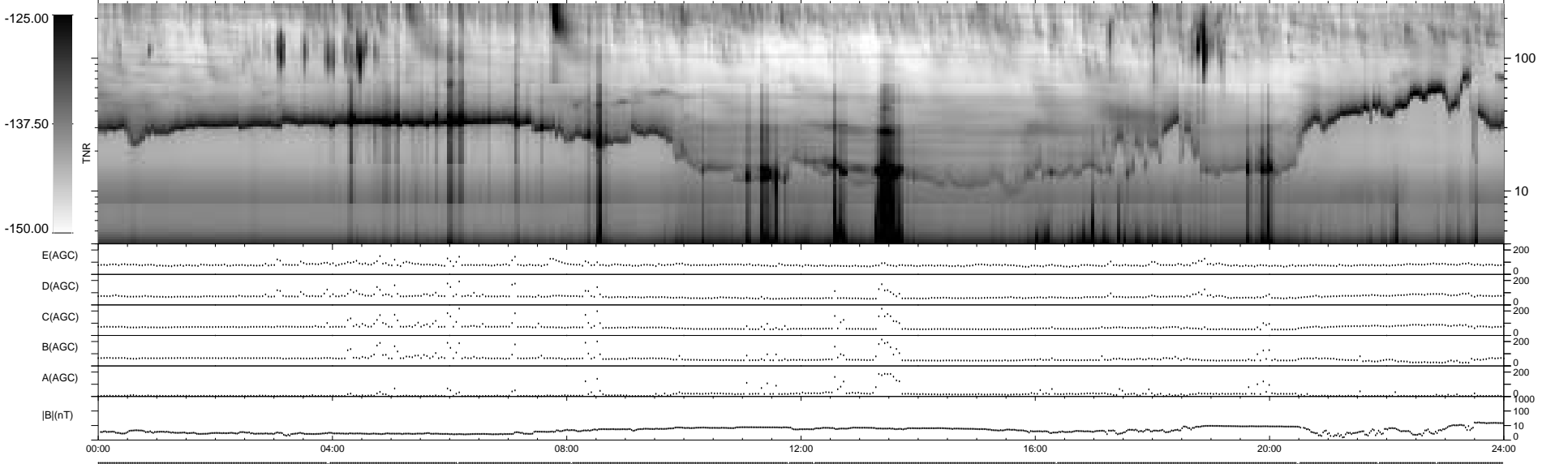
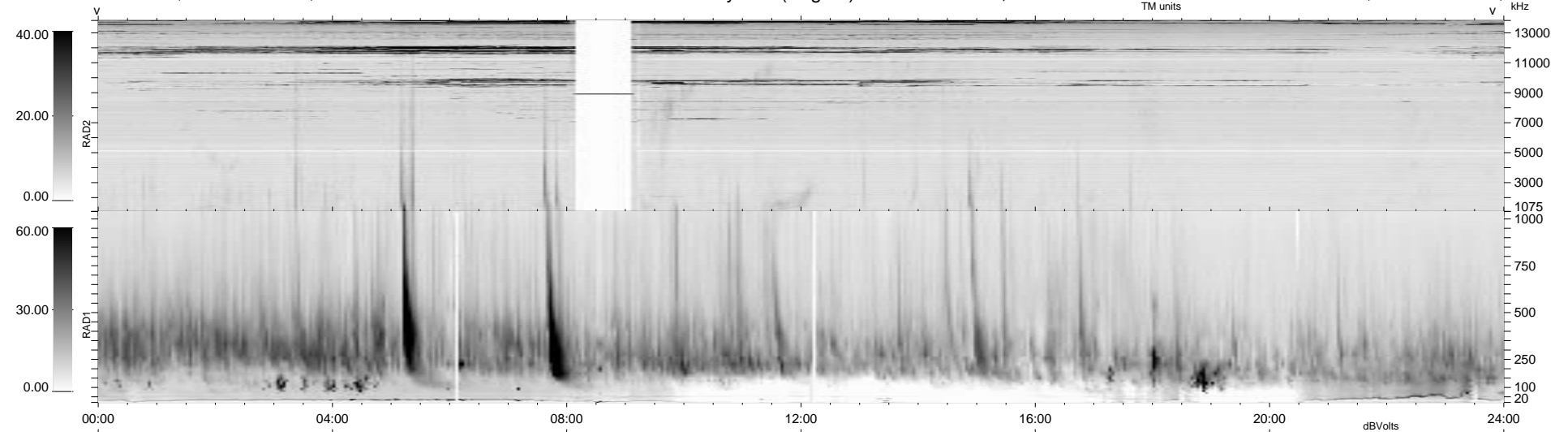


11 bad + 928 good MF/939MF projected (98%) - 0 missing MFs
 Avg interval = 180 secs
 Re = 74.49 (72.73, -15.84, -2.80 GSE)

1.7d VMS-SunOS LZ version = v01
 DAILY Tue Sep 16, 2008
 Re = 80.58 (79.56, -12.43, -3.00 GSE)

WIND/WAVES Summary Plot (Page 1) for 30-JUL-1998, DOY = 211



RAD2
 Antenna Ey
 Mode LIN(1)
 SUM/SEP SUM FIX(15Z) LIN(1)
 Toggle OFF SEP SUM

RAD1
 Antenna Ex
 Mode LIS(2.8)
 SUM/SEP SUM
 Toggle OFF

TNR
 Antenna ExEy
 Mode A-32
 Sweep ABCDE